

Date:

This Bulletin is Rated:

<input type="radio"/>	MANDATORY (Action Required)	<input type="radio"/>	ALERT (Potential Problem)
<input type="radio"/>	PRODUCT IMPROVEMENT	<input checked="" type="radio"/>	INFORMATIONAL

Three (3) different labels are used to record VIN information.

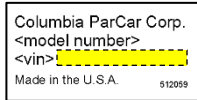


Figure 1 – Small VIN Label

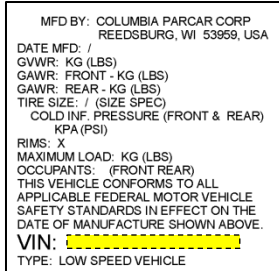


Figure 2 – LSV Label

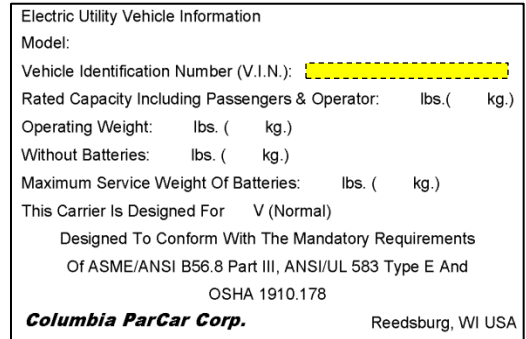


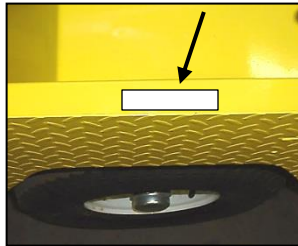
Figure 3 – Electric Utility Label

In addition some vehicle will have the VIN stamped on the chassis.

VIN LOCATIONS

PAYLOADER (BC)

Stamped on the left chassis frame beneath the driver's seat and on the electric vehicle nameplate (Fig. 3) attached to the dash below the horn.



SHUTTLE (C6, C8), SCOUT (S10), PTV SUMMIT (SUV), Utilitruck (EU)

On a small label (Fig. 1) placed under the steering wheel cover and on the electric vehicle nameplate (Fig. 3) located in the driver side glove box.



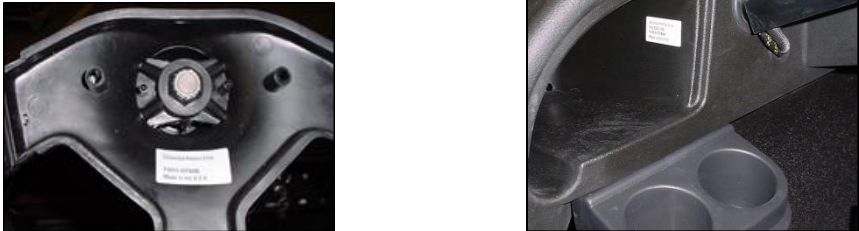
LSV EAGLE (NEV 2, NEV 4)

On a small label (Fig. 1) placed under the steering wheel cover and on a VIN plate attached to the top of the dash above the driver's position. On a low speed vehicle nameplate (Fig. 2) located in the driver side glove box.



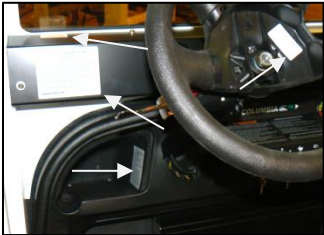
PTV EAGLE (P4E)

On a label (Fig. 1) placed under the steering wheel cover in the driver side glove box.



LSV SUMMIT (SM2, SM4, SUV)

On a label (Fig. 1) under the steering wheel cover and on top of the dash. On a low speed vehicle nameplate (Fig. 2) located in the driver's side glove box.



PTV EAGLE (P5), SUMMIT UTILITRUCK (SU5)

On a label (Fig. 1) placed under the steering wheel cover in the glove box.



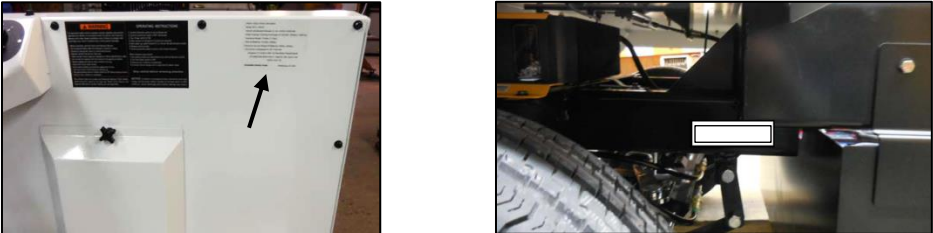
LSV EAGLE (P5), SUMMIT UTILITRUCK (SU5)

On a label (Fig. 1) placed under the steering wheel cover in the passenger side glove box or on top of the driver side dash. On a label (Fig. 2) located under the front hood.



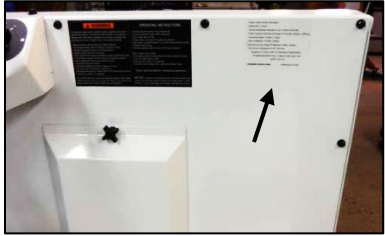
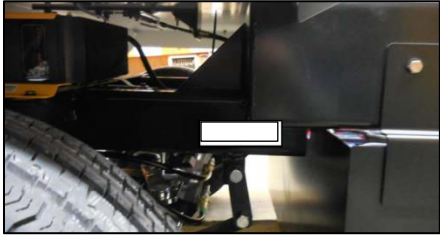
MVP (MV1-S-BXA,BAA,BXXA,BXAA,BBAA)

On an electric vehicle nameplate (Fig. 3) located on the cowl, right side top corner. Stamped on the chassis, driver's side in front of the battery tray.



MVP (MV1-LN)

On a label (Fig. 1) located on the top of the metal dash, driver side. Stamped on the chassis, driver's side in front of the battery tray. On a low speed vehicle nameplate (Fig. 2) located on the cowl, right side top corner.



PTV MEGA

On a small label (Fig. 1) under the steering wheel cover and on a VIN plate located on top of the driver's side dash. On an electric vehicle nameplate (Fig. 3) located on the cabin base tub below the driver's seat.



LSV MEGA

On a small label (Fig. 1) under the steering wheel cover, on a VIN plate located on top of the driver's side dash and in the glove box. On a low speed vehicle nameplate (Fig. 2) located on the cabin base tub below the driver's seat.



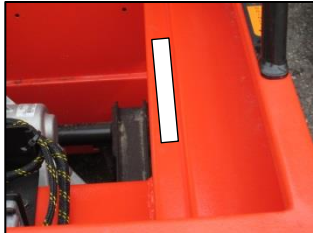
IS12

Stamped on the right side body chassis under the front deck and on the electric vehicle nameplate (Figure 3) located on the vertical panel to the right of the dash.



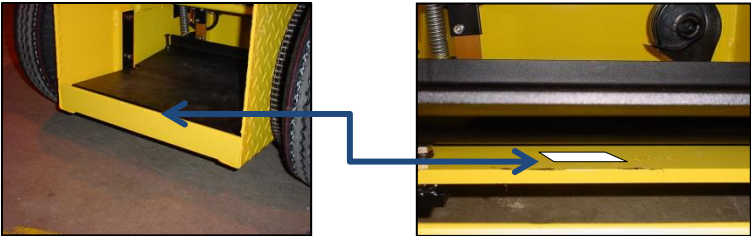
EX21

Stamped on the right front corner of the rear body chassis under the rear deck and on the electric vehicle nameplate (Figure 3) located on the vertical panel below the seat.



CR 10

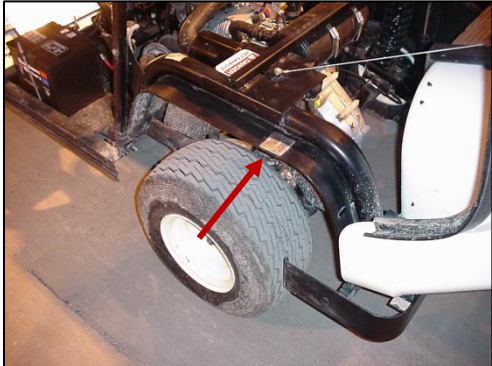
On the electric vehicle nameplate (Fig. 3) located on the left side of the operator's position and also stamped on the metal cross bar located under the foot treadle platform.



EAGLE & SHUTTLE 2000



1996 – 1999 EAGLE



If you have any questions with this bulletin, please contact the Technical Service Department at Columbia ParCar Corp.