



COLUMBIA

Parts Manual

Expediter

EX 21-24,
EX21-48
TE31

Preface

Welcome, and congratulations on your choice of vehicle from Columbia ParCar Corp.! Your vehicle has been designed and manufactured to conform to applicable sections of ANSI B56.8. Your safe use and operation of your vehicle is important to us. Any alteration of your Columbia vehicle that results in the vehicle being in noncompliance with applicable ANSI standards is strictly prohibited. Columbia ParCar Corp. is not responsible or liable for any damage that results from any such alteration, and all warranties for any such altered vehicles are null and void.

These vehicles are not designed for over-the-road use. They do not conform to Federal Motor Vehicle Safety Standards or EPA regulations, and are not equipped for operation on public streets, roads, or highways.

To the best knowledge of Columbia ParCar Corp., the material contained herein is accurate as of the date this publication was approved for printing. Columbia ParCar Corp. is not liable for errors in this manual or for incidental or consequential damages that result from the use of the material in this manual. Columbia ParCar Corp. reserves the right to change specifications, equipment or designs at any time without notice and without incurring obligation.

This manual contains proprietary information that is protected by copyright. All rights are reserved. No part of this manual may be photocopied, reproduced, or translated to another language without the written consent of Columbia ParCar Corp. Columbia ParCar Corp. products are manufactured under one or more of the following U.S. Patents - 2986162, 2987934, 3116089, 3144631, 3144860, 3229792, 3434887, 3559773, 3673359, 3680403, 3683716, 3709317, 4648473, Des. 225626.



1115 Commercial Avenue • Keosauqua, WI 53959
Phone: (608) 524-8888 • Fax: (608) 524-8380
(800) 222-4653 • Web: www.parcars.com

INDEX

SECTION 1 Accelerator and Brake Linkage

Pedal Accelerator Device Linkage	1-1
Brake Linkage	1-2
Brake Linkage W/Tapeswitch	1-5

SECTION 2 Steering and Front Suspension

Front Suspension 3 Wheel	2-1
Front Non-suspension 3 Wheel	2-3
Front Suspension 4 Wheel	2-5
Front Axle 4 Wheel	2-7
Wheel Steering	2-9
Tiller Steering	2-11

SECTION 3 Body, Seats, Bumper

Body & Seats	3-1
Body TE31	3-2
Front Bumper 3 Wheel	3-7
Consol	3-8
Decals	3-9
Ace+ Controller W/Fuse Block	3-10

SECTION 4 Electrical

Main Wire Harness	4-1
Accessory Wire Harness	4-4
Electric Controls	4-7
Batteries	4-8
Charger With Remote Led	4-10
Main Wire Harness with Fuse Block	4-11
Accessory Wire Harness with Fuse Block	4-14
Fuse Block	4-15

SECTION 5 Rear Suspension, Brakes & Axle

Rear Suspension	5-1
Rear Axle	5-3
Axle & Gear Sets	5-5
Gear Sets	5-7
Mechanical Brake Assembly	5-8
Motor, SEP EX	5-10

SECTION 6 Options

Battery Watering System	6-1
Headlight	6-2
Hitches	6-3
Seat Belts	6-4
Strobe Light – EX21	6-5
Strobe Light – TE31	6-6
Wheels	6-7
Strobe Light – EX21 (fuse block vehicles)	6-8
Strobe Light – TE31 (fuse block vehicles)	6-9

Note:

Starting in February of 2015, Columbia started implementing the use of textured black paint instead of satin black on certain accessories. When ordering black coated parts it may be necessary to state if they have the satin finish or the textured finish.

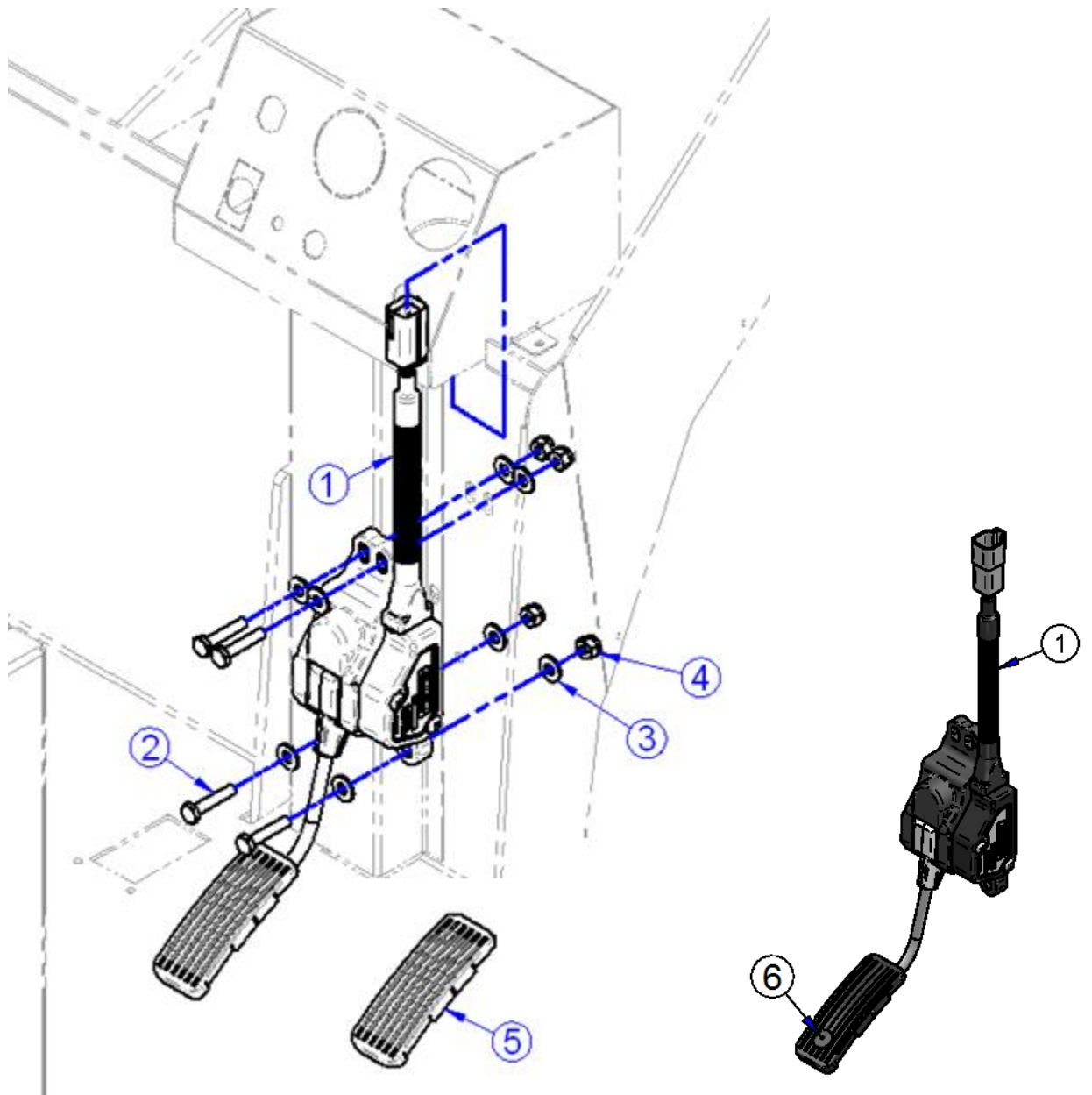
CHANGE HISTORY – EX21		
DATE	DESCRIPTION	BY
3/28/11	Issued	TS
12/12/13	Changed upper bearing on front non-suspension.	TS
2/5/14	Added parking brake decal	TS
7/15/14	Changed tool express	TS
7/22/14	Added ACE+ W/Fuse Block	TS
8/11/14	Added rivet to secure LAD pedal pad.	TS
10/23/14	Added Hub Bearing Kit	TS
3/31/15	Added note about the black finish changing & battery washers	TS
4/14/15	Changed brake linkage nut from nylok to center lock (7740-B)	TS

Expediter Parts Manual

Section 1

Accelerator and Brake Linkage

PEDAL ACCELERATOR DEVICE LINKAGE – EX

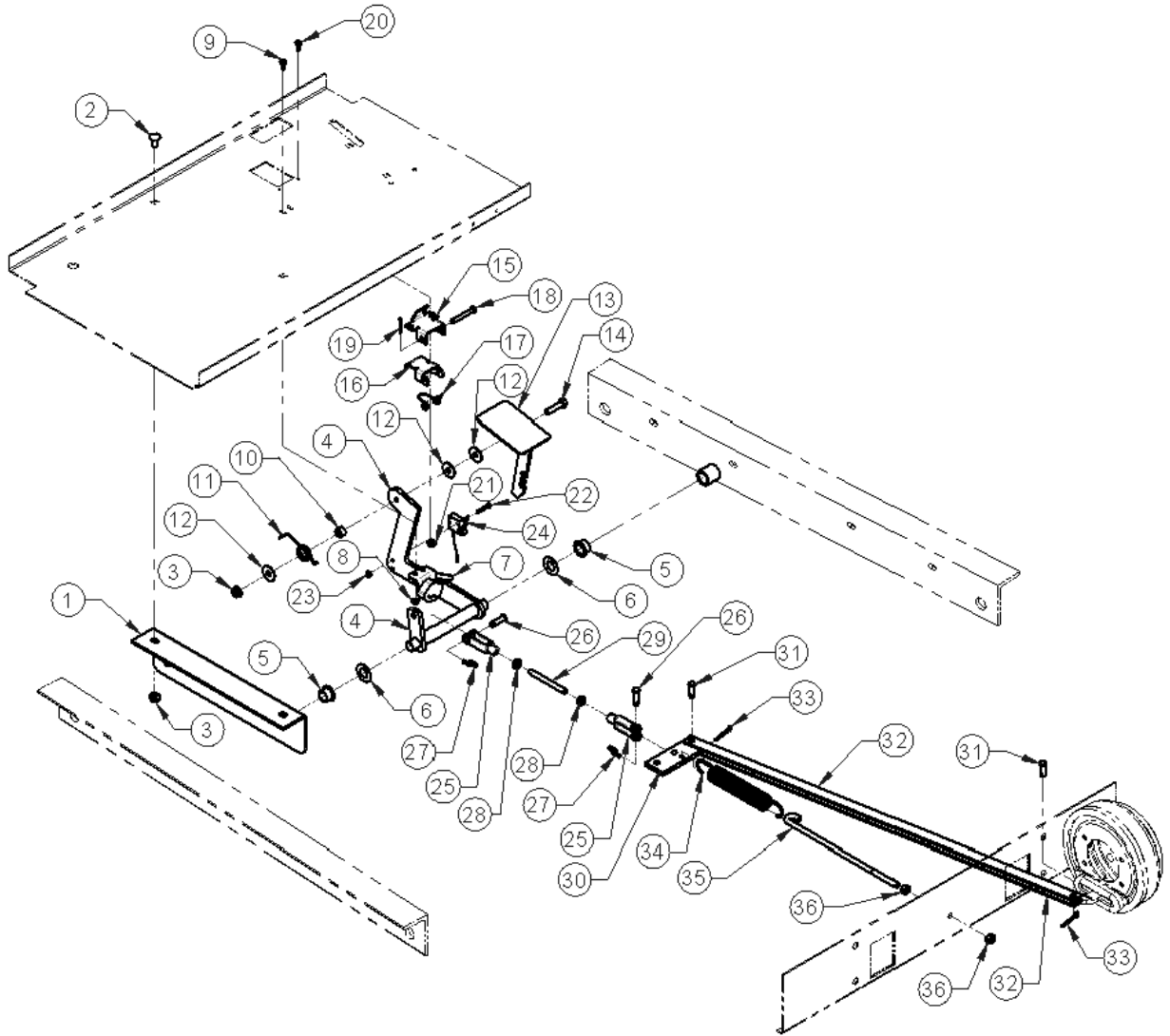


ITEM	CPC P/N	DESCRIPTION	QTY	SEATS P/N
1	40610-10	PEDAL ASSEMBLY, ACCEL. & HARNESS	1	760635
2	708616	SCREW, 1/4-20X1 1/4 HHC	4	708616
3	6703-B	WASHER, 1/4	8	719811
4	7686	NUT, 1/4-20 NYLOCK	4	719879
5	40891-12	PEDAL PAD REPLACEMENT (Recommend gluing in place)	1	760784
6	8486	RIVET, #66, 3/16, AL, BLIND (See Note)	1	719941

* SPECIAL ORDER

NOTE: To secure pedal pad.

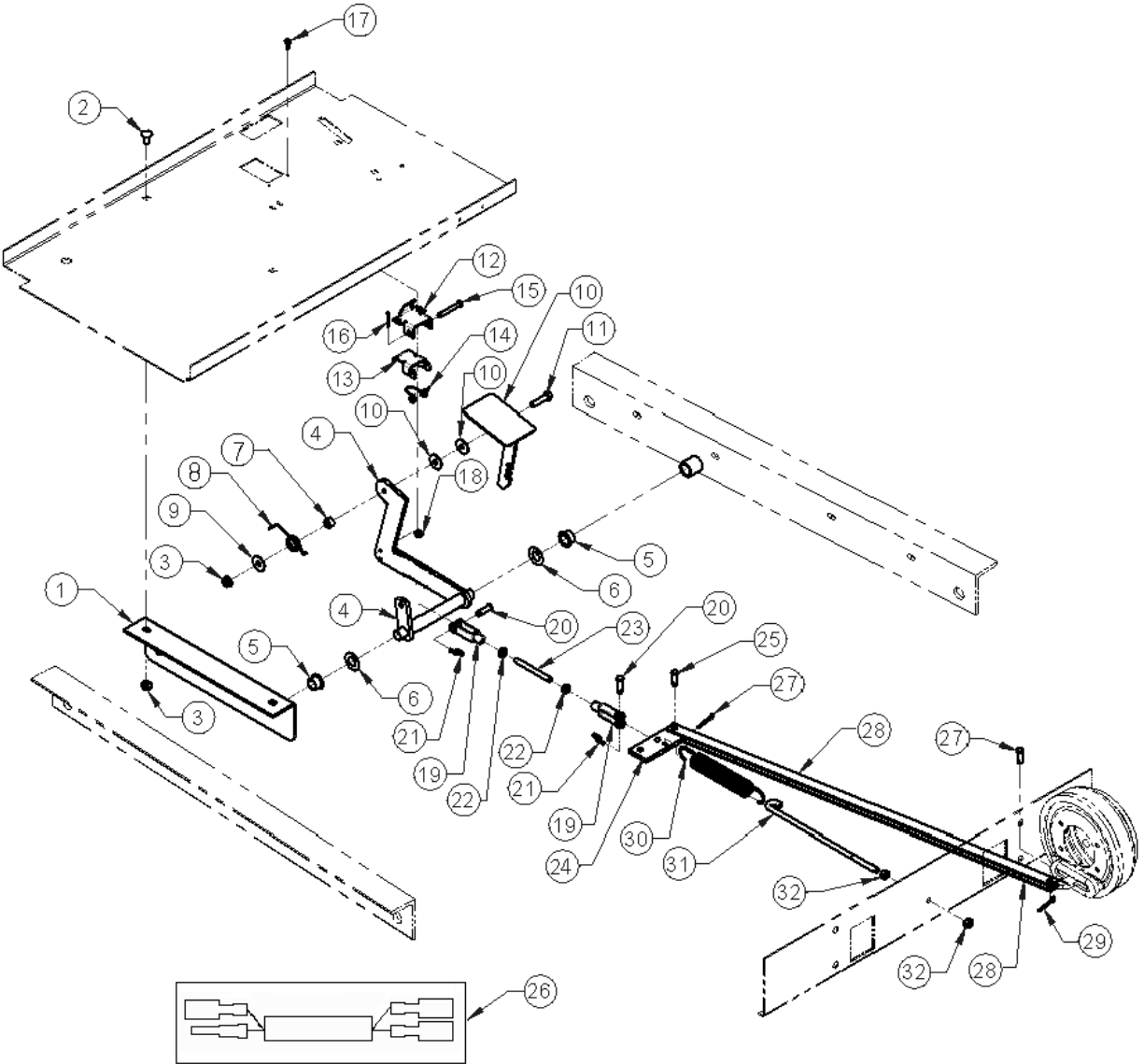
BRAKE LINKAGE - EX



BRAKE LINKAGE – EX (Cont.)

ITEM	CPC P/N	DESCRIPTION	QTY	SEATS P/N
1	42665-96	BRAKE PIVOT WELD.	1	307172
2	5400-BS	SCREW, 5/16-18 X 1 CARR GR 5 BLK	2	719744
3	7740-B	NUT, 5/16-18 HEX C-L/N, GA	2	719893
4	42564-96	BRAKE ARM WELD	1	307212
5	9077	BUSHING NYLON FLANGE	2	719957
6	6828	WASHER FLT STL .635 X 1.185 X .036 YWZC	2	719815
7	68040-96	SWITCH, STOP LAMP	1	709704
8	7626-W	NUT, 10-32 GR A NM MACH. NYLOCK	2	719871
9	2604	SCREW, #10-32 X 1/2 PHILLIPS PHM	2	719570
10	26252-96	BUSHING, BRAKE	1	512180PL
11	11813-96	SPRING, TORSION - 7/8 ID	1	709687
12	6830	WASHER FLT NYLON 5/16 X 1 X .036	3	719816
13	42660-96	BRAKE PEDAL	1	307210
14	2871-W	SCREW, 5/16-18 X 1 1/4 GRD 5 HHC	1	719592
15	42668-96	PARKING BRAKE LATCH	1	509251
16	42667-96	BRAKE LOCK LATCH	1	509250
17	11814-96	SPRING, TORSION - DOUBLE	1	709686
18	42360-96	CLEVIS PIN, 1/4 X 1 3/4 ZINC/CLEAR	1	719660
19	515	PIN, COTTER 1/16 X 3/4 18-8 SS BLK ZC	1	719726
20	2592	SCREW, #10-24 X 1/2 PHILLIPS PHM	2	719566
21	7624	NUT, #10-24 GR A NM MACH NYLON LOCK	2	719870
22	2556	SCREW, #6-32 X 1 PHILLIPS PHM	2	719565
23	7592	NUT, #6-32 GR A NM MACH BYLON YWZC	2	719866
24	78012-98	ASSEMBLY MICROSWITCH - EX 21	1	464387
25	73059-96	CLEVIS #52 5/16-24 ADJ YOKE END CLR	2	719852
26	494	CLEVIS PIN, Ø5/16 X 1 ZINC/CLEAR	2	719709
27	552	COTTER RING ZINC PIVOT POINT RUE #10	2	719752
28	7744	NUT, 5/16-24 GR 2 HEX JAM YWZC	2	719895
29	24820-96	STUD, 5/16-24 X 3 FULL THDED	1	719558
30	42670-96	BRAKE EQUALIZER BAR	1	510327
31	497	CLEVIS PIN, Ø5/16 X 7/8 YELLOW/ZINC	4	719713
32	42393-96	BRAKE STRIP	4	509262
33	520-W	PIN, COTTER 1/8 X 1 YELLOW ZINC	4	719728
34	11812-96	SPRING, EXTRUSION	1	709685
35	42424-96	ROD, ADJUSTING	1	709693
36	7748-B	NUT, 5/16-24, HEX. FULL-FINIHS, G2, BLK	2	719896
37	9800	GREASE FITTING	2	709110

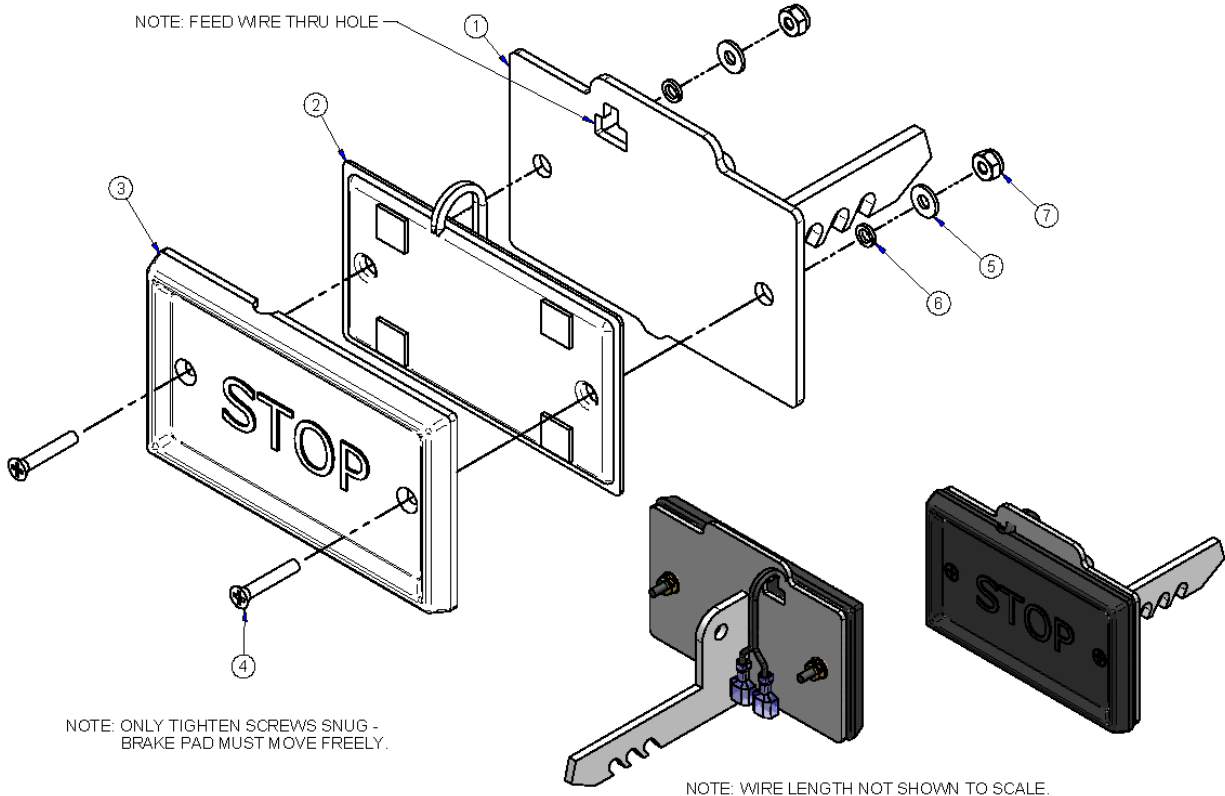
BRAKE LINKAGE W/TAPESWITCH – EX
(FOR VEHICLES WITH VIN ET2E2-3ZL0109 AND LATER)



BRAKE LINKAGE W/TAPESWITCH – EX (Cont.)

ITEM	CPC P/N	DESCRIPTION	QTY	SEATS P/N
1	42665-96	BRAKE PIVOT WELD.	1	307172
2	5400-BS	SCREW, 5/16-18 X 1 CARR GR 5 BLK	2	719744
3	7740-B	NUT, 5/16-18 HEX C-L/N, GA	2	719893
4	42564-96	BRAKE ARM WELD	1	307212
5	9077	BUSHING NYLON FLANGE	2	719957
6	6828	WASHER FLT STL .635 X 1.185 X .036 YWZC	2	719815
7	26252-96	BUSHING, BRAKE	1	512180PL
8	11813-96	SPRING, TORSION - 7/8 ID	1	709687
9	6830	WASHER FLT NYLON 5/16 X 1 X .036	3	719816
10	46203-12	BRAKE PEDAL ASSEMBLY (See Page 1-6)	1	467846
11	2871-W	SCREW, 5/16-18 X 1 1/4 GRD 5 HHC	1	719592
12	42668-96	PARKING BRAKE LATCH	1	509251
13	42667-96	BRAKE LOCK LATCH	1	509250
14	11814-96	SPRING, TORSION - DOUBLE	1	709686
15	42360-96	CLEVIS PIN, 1/4 X 1 3/4 ZINC/CLEAR	1	719660
16	515	PIN, COTTER 1/16 X 3/4 18-8 SS BLK ZC	1	719726
17	2592	SCREW, #10-24 X 1/2 PHILLIPS PHM	2	719566
18	7624	NUT, #10-24 GR A NM MACH NYLON LOCK	2	719870
19	73059-96	CLEVIS #52 5/16-24 ADJ YOKE END CLR	2	719852
20	494	CLEVIS PIN, Ø5/16 X 1 ZINC/CLEAR	2	719709
21	552	COTTER RING ZINC PIVOT POINT RUE #10	2	719752
22	7744	NUT, 5/16-24 GR 2 HEX JAM YWZC	2	719895
23	24820-96	STUD, 5/16-24 X 3 FULL THDED	1	719558
24	42670-96	BRAKE EQUALIZER BAR	1	510327
25	497	CLEVIS PIN, Ø5/16 X 7/8 YELLOW/ZINC	4	719713
26	46204-12	BRAKE SWITCH HARNESS ADAPTER (Connects Item10 to the accessory wire harness)	1	467847
27	9800	GREASE FITTING	2	709110
28	42393-96	BRAKE STRIP	4	509262
29	520-W	PIN, COTTER 1/8 X 1 YELLOW ZINC	4	719728
30	11812-96	SPRING, EXTRUSION	1	709685
31	42424-96	ROD, ADJUSTING	1	709693
32	7748-B	NUT, 5/16-24, HEX. FULL- G2, BLK	2	719896
33	68041-12	BRAKE LIGHT SWITCH KIT (Includes Items 10 & 26)	1	N/A

**BRAKE PEDAL – EX
P/N 46203-12**



ITEM	CPC P/N	DESCRIPTION	QTY	SEATS P/N
1	*	EX21 BRAKE PEDAL	1	311029
2	71522-02	ASSY TAPESWITCH BRAKE LIGHT	1	464248
3	42407-00A	MACH, BRAKE PAD (TAPESWITCH)	1	467084
4	2616	SCREW, 8-32 X 1 PHIL FHMS	2	719574
5	6912-B	WASHER, #8 TYPE A PLAIN, BLACK ZINC	2	719817
6	7015-B	WASHER LOCK #8 REGULAR BLK ZINC	2	719833
7	7609-W	NUT #8-32 GR A NM MACH NYLON LOCK	2	719868

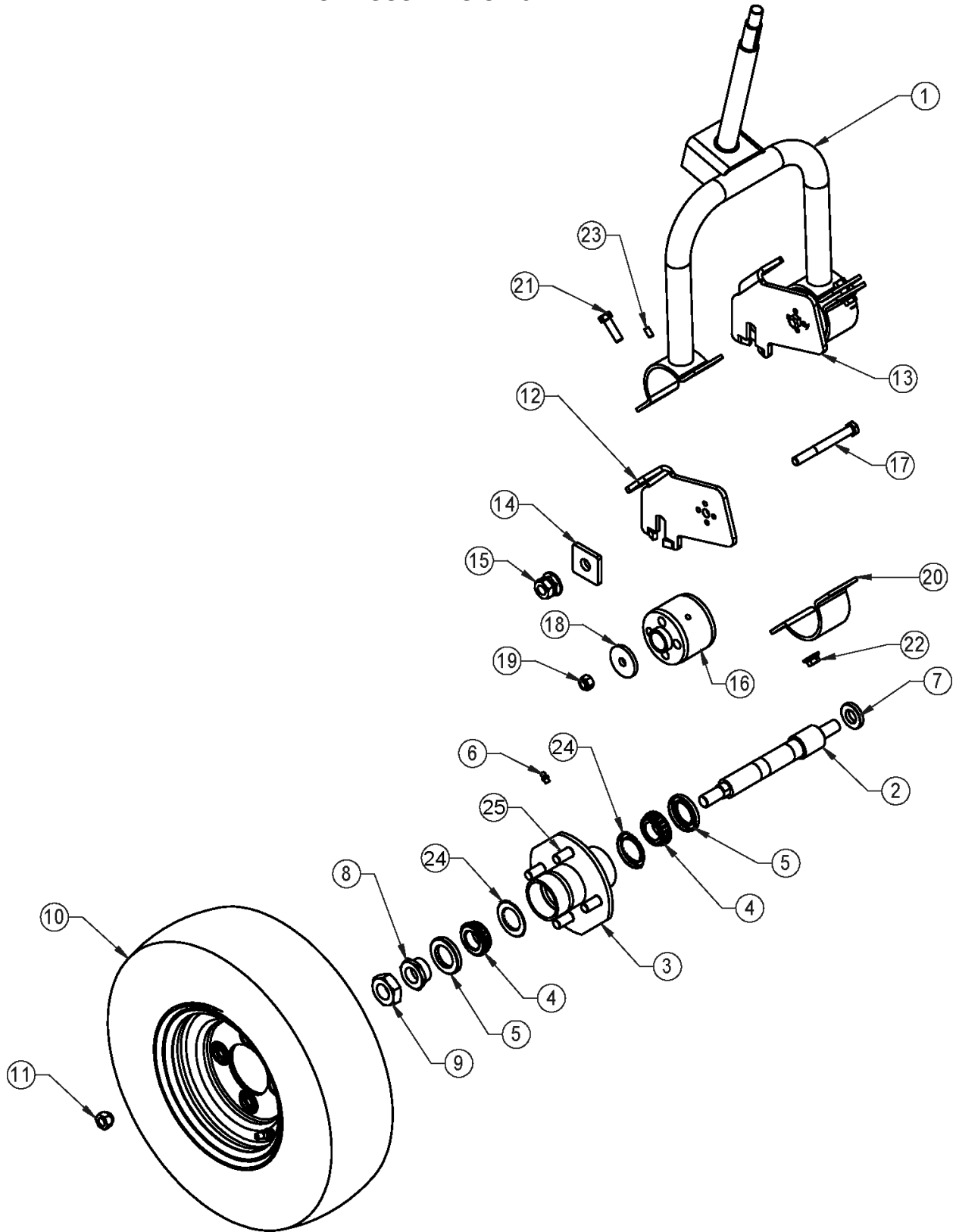
* SPECIAL ORDER

Expediter Parts Manual

Section 2

Steering and Front Suspension

FRONT SUSPENSION 3 WHEEL - EX

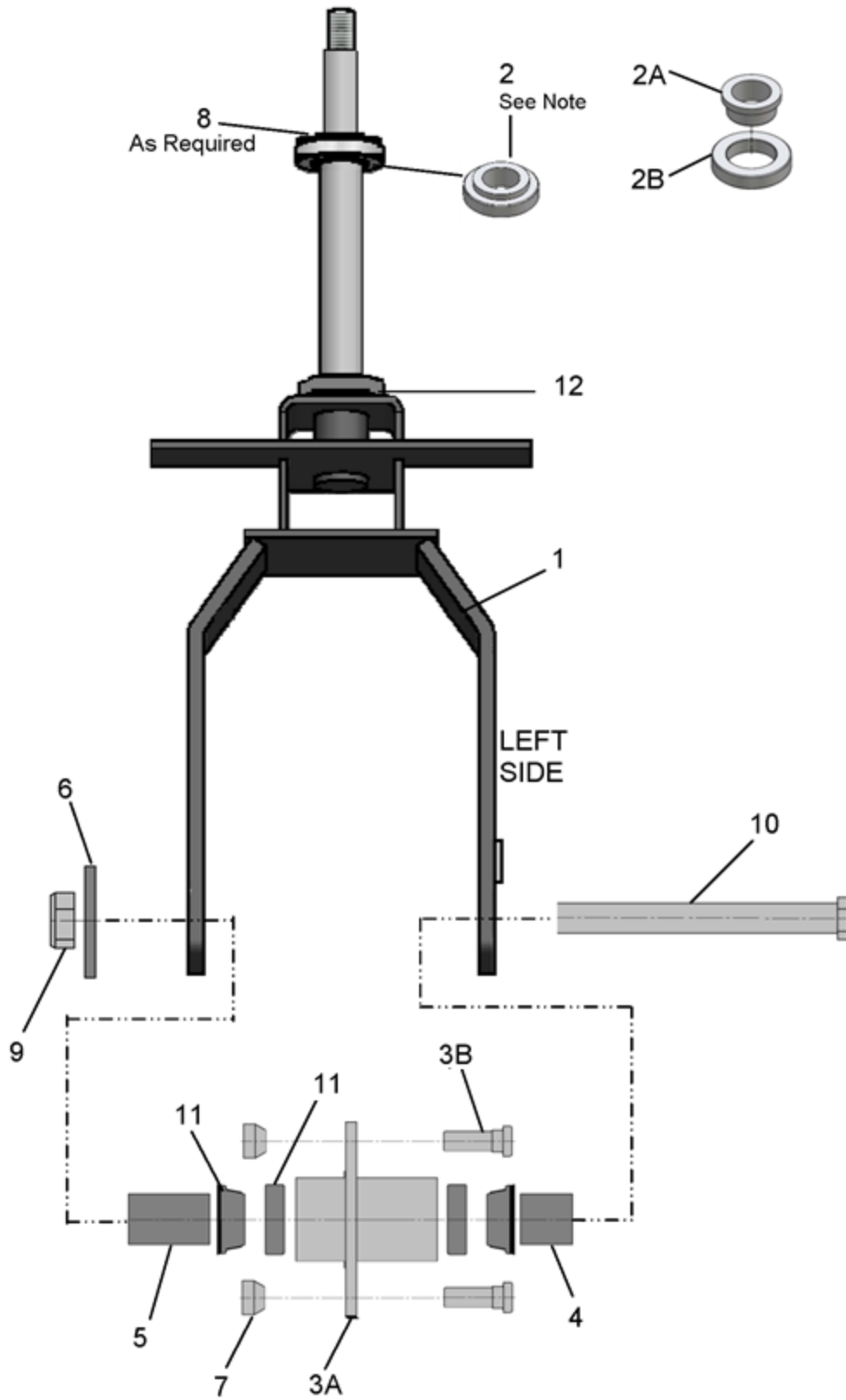


FRONT SUSPENSION 3 WHEEL – EX (Cont.)

ITEM	CPC P/N	DESCRIPTION	QTY	SEATS P/N
1	45530-96	FRONT FORK WELDM'T - EX-21	1	304602
2	43484-96	AXLE, FRONT FORK	1	709445
3	*	HUB	1	310594
4	44003-95	ROLLER BEARING, L44643	2	719684
5	44004-95	SEAL BEARING, 125192TB	2	719685
6	9800	GREASE FITTING, 1/4-28	1	709110
7	6568	WASHER FLT STL YWZC .734 X 1.375 X.24	1	719801
8	7896	NUT, BEARING ADJUSTING	1	709443
9	7897	NUT, 1-8 GR 2, HEX JAM CLR ZINC	1	719914
10	40988-95	RIM & TIRE, 4.80 X 8.00 LRB	1	709107
10A	42115-04	RIM & TIRE, 4.80 X 8.00 FOAM FILLED	1	719349
10B	40995-96	RIM & TIRE, 4.80 X 8.00 SOLID NON-MARKING	1	709930
10C	40808-10	RIM & TIRE, 4.80 X 8.00 PNEUMATIC NON-MARKING	1	760323
11	43152-66	NUT, 1/2-20, TAPERED WHEEL	4	709002
12	43473-96	BRACKET- RH, EX 21	1	509168
13	43472-96	BRACKET - LH, EX 21	1	509167
14	45400-98	PLATE, RETAINING-AXLE	2	509161
15	781140	NUT, 5/8-11 NYLOCK	2	781140
16	43470-96	MOUNT, SUSPENSION	2	709401
17	4259	SCR, HX HD 7/16-20 X 4 G5 ZINC/CLR	2	719666
18	6336	WASHER 7/16, USS/STD	2	707374
19	7825	NUT, 7/16-20, LOCK, GA, NE, NYLON INSERT	2	719908
20	45532-96	EX-21 FORK HALF CLAMP	2	510194
21	4716-W	SCREW, HX HD CAP 3/8-16 X 1 ¼ G5	4	719694
22	7512	NUT, 3/8-16 GR A SERRATED FLG	4	719860
23	625	ROLL PIN, 1/4X5/8"	2	719121
24	44005-95	RACE BEARING	2	719686
25	41199	WHEEL BOLT 1/2-20X1 1/2	4	719655
26	43485-96	HUB ASSEMBLY (Includes Items 3 – 5, 24 & 25)	2	467798

* SPECIAL ORDER

FRONT NON-SUSPENSION THREE WHEEL – EX



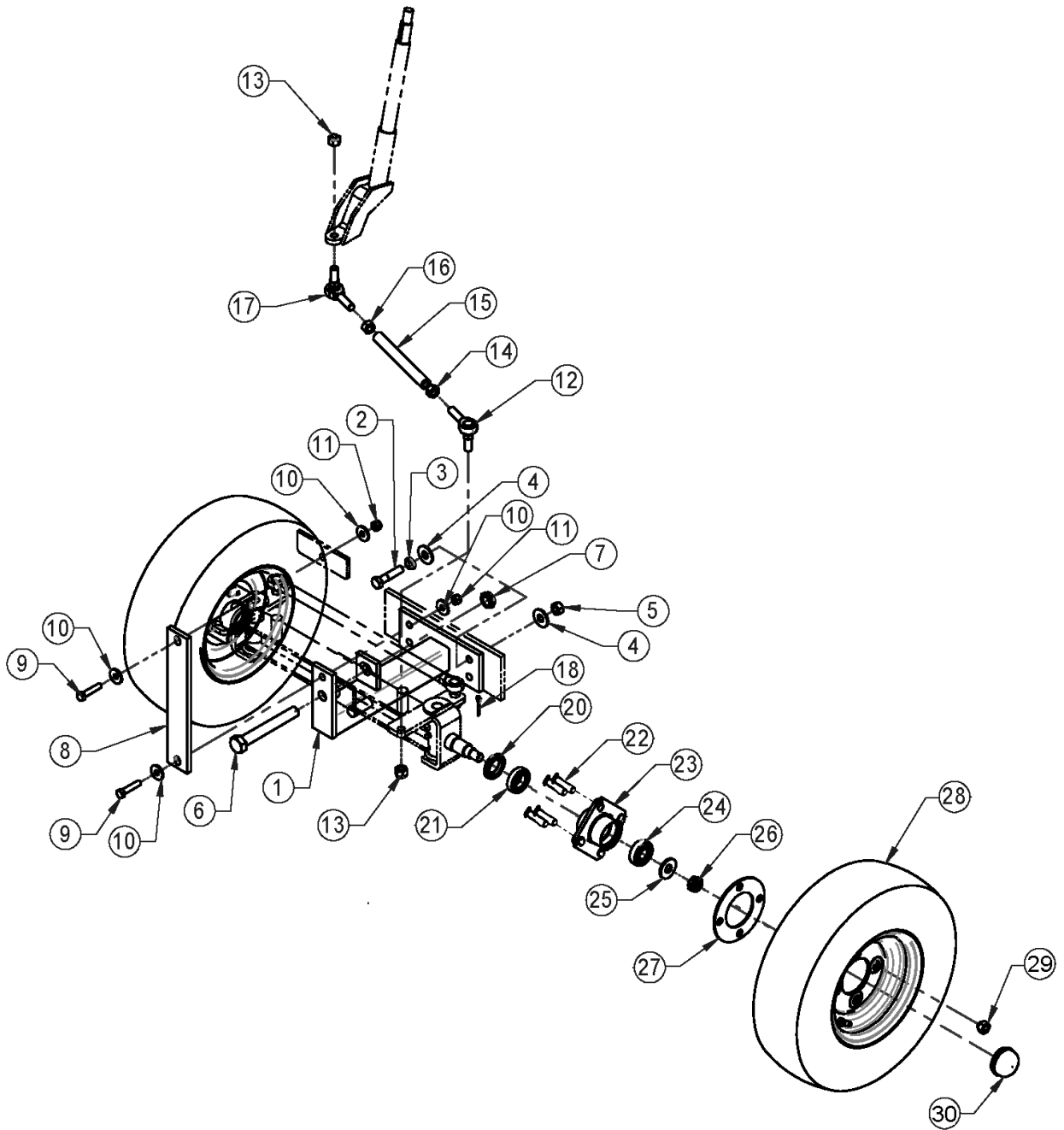
NOTE: Item 2 is not included with Item 1.

FRONT NON-SUSPENSION THREE WHEEL – EX (Cont.)

ITEM	CPC P/N	DESCRIPTION	QTY	SEATS P/N
1	56850-12	FRONT FORK	1	310749
2	27011-07	NYLON BEARING ASSEMBLY	1	467529
2A	36671-07	FLANGE BEARING	1	759893
2B	36672-07	BEARING REDUCER 2.00X1.25XS0.40	1	759894
3	*	HUB ASSEMBLY (Includes 3A & B)	1	467795
3A	*	HUB	1	310547
3B	41199	WHEEL BOLT 1/2-20X1 1/2 G5 YWZC 150	4	719655
4	56833-00	FRONT FORK SPACER, LH – 0.75”	1	510358
5	56836-00	FRONT FORK SPACER 2.125”	1	510359
6	6037	WASHER, 3/4” FLAT ZNC	1	708659
7	43152-66	NUT, 1/2-20 TAPERED WHEEL	4	709002
8	6832	WASHER 1.250 OD X 1.00 ID X .042 THK	AR	709353
9	7711	JAM NUT, 3/4-10X1/2 NYLON	1	709655
10	3431	SCREW, 3/4-10X8 HHCS, G5 ZC	1	719618
11	9089	KIT, HUB BEARING, RACE AND SEAL	2	191886U
12	9078	ROLLER BEARING	1	719958
13	56801-00	KIT, FRONT & L RR 4 HOLE (Includes Items 2, 3, & 7)	1	192188U
14	40952-11	KIT T-FORK NO SUSPENSION (Includes Items 1-11)	1	192334U

* ONLY AVAILABLE AS KITS, Item 13 or 14

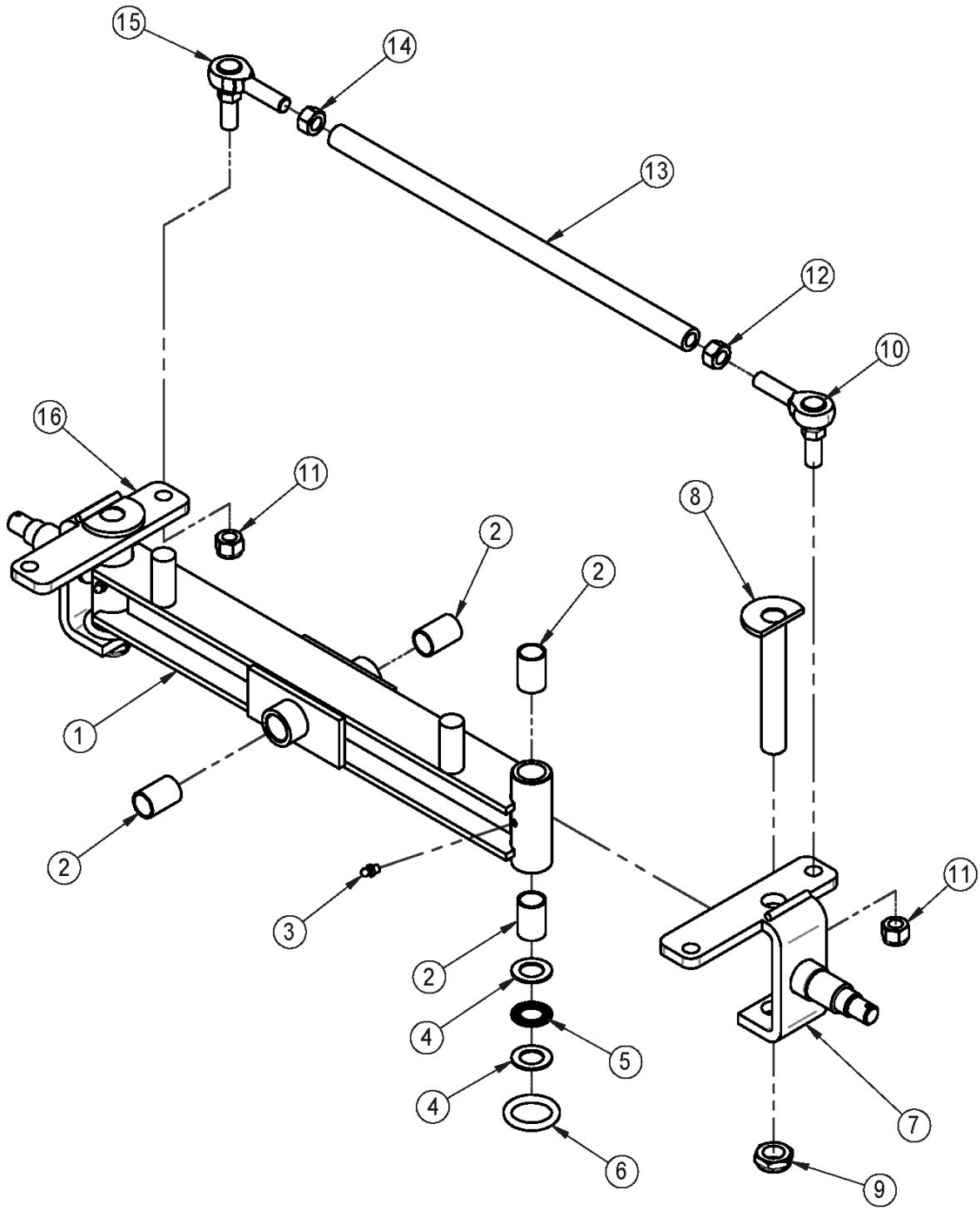
FRONT SUSPENSION 4 WHEEL – EX



FRONT SUSPENSION 4 WHEEL – EX (Cont.)

ITEM	CPC P/N	DESCRIPTION	QTY	SEATS P/N
1	82887-04	WELDMT, AXLE SPRT - EX 21	1	307585
2	3407	SCREW, 1/2-13 X 2 1/4 GRD 5 HHC	4	719611
3	7068	WASHER, LOCK, 1/2 REGULAR MECH YWZC	4	719840
4	6005	WASHER, FTL STL, 1/2 STD UNHARD YWZC	8	719772
5	7880	NUT, 1/2-13 GR 2 HEX FULL YWZC	4	719913
6	54817-00	SCREW, 3/4-16 X 5-1/2", HHCS, G5, ZC	1	739586
7	7513	NUT, 3/4-16 GR A NTE STYLE JAM NYLON	1	719861
8	45404-04	PLATE, RETAINER - AXLE	1	509763
9	4720-B	SCREW, HX HD CAP 3/8-16 X 1-3/4 G5	2	719696
10	6417-W	WASHER, FLT STL BLK ZNC .391 X 1.125	4	719797
11	7778	LOCKNUT, 3/8 - 16 HEX NYLON	2	719902
12	57063-96	ASSY, TIE ROD END - 1/2-20 RH THD	1	709761
13	7812-W	NUT, 1/2-20 GR A NE NYLON INSERT YWZ	2	719907
14	7644	NUT, 1/2-20 GR 2 HEX JAM YWZC	1	719873
15	46816-04	LINK, TIE ROD – SHORT	1	509769
16	7520	NUT, 1/2-20 GR 2 HEX JAM YWZC - LH THD	1	719360
17	58605-04	ASSY, TIE ROD END, LH THREAD	1	719343
18	520-W	PIN, COTTER 1/8 X 1 YELLOW ZINC	2	719728
19	43481-89	FRONT HUB ASSY(Includes Items 20 -24	2	461830
20	12030	SEAL, OIL	2	709017
21	9031	BEARING 6005	2	719954
22	41199	WHEEL BOLT 1/2-20X1 1/2 G5	8	719655
23	43463-89	HUB FRONT WHEEL WLDMNT	2	303069
24	9030	BEARING 6204	2	719953
25	6655-B	WASHER FLT STL 9/16 STD UNHARD BLK	2	719808
26	7947-B	NUT, 5/8-18 GR 2 SLOTTED HEX BLK MAX	2	719915
27	43740-04	SPACER, WHEEL - 4 HOLE	2	509958
28	40988-95	RIM & TIRE, 4.80 X 8.00 LRB	2	709107
28A	42115-04	RIM & TIRE, 4.80 X 8.00 FOAM FILLED	2	719349
28B	40995-96	RIM & TIRE, 4.80 X 8.00 SOLID NON-MARKING	2	709930
28C	40808-10	RIM & TIRE, 4.80 X 8.00 PNEUMATIC NON-MARKING	2	760323
29	43152-66	NUT, 1/2-20, TAPERED WHEEL	8	709002
30	43646-79	HUB GREASE CAP	2	709018

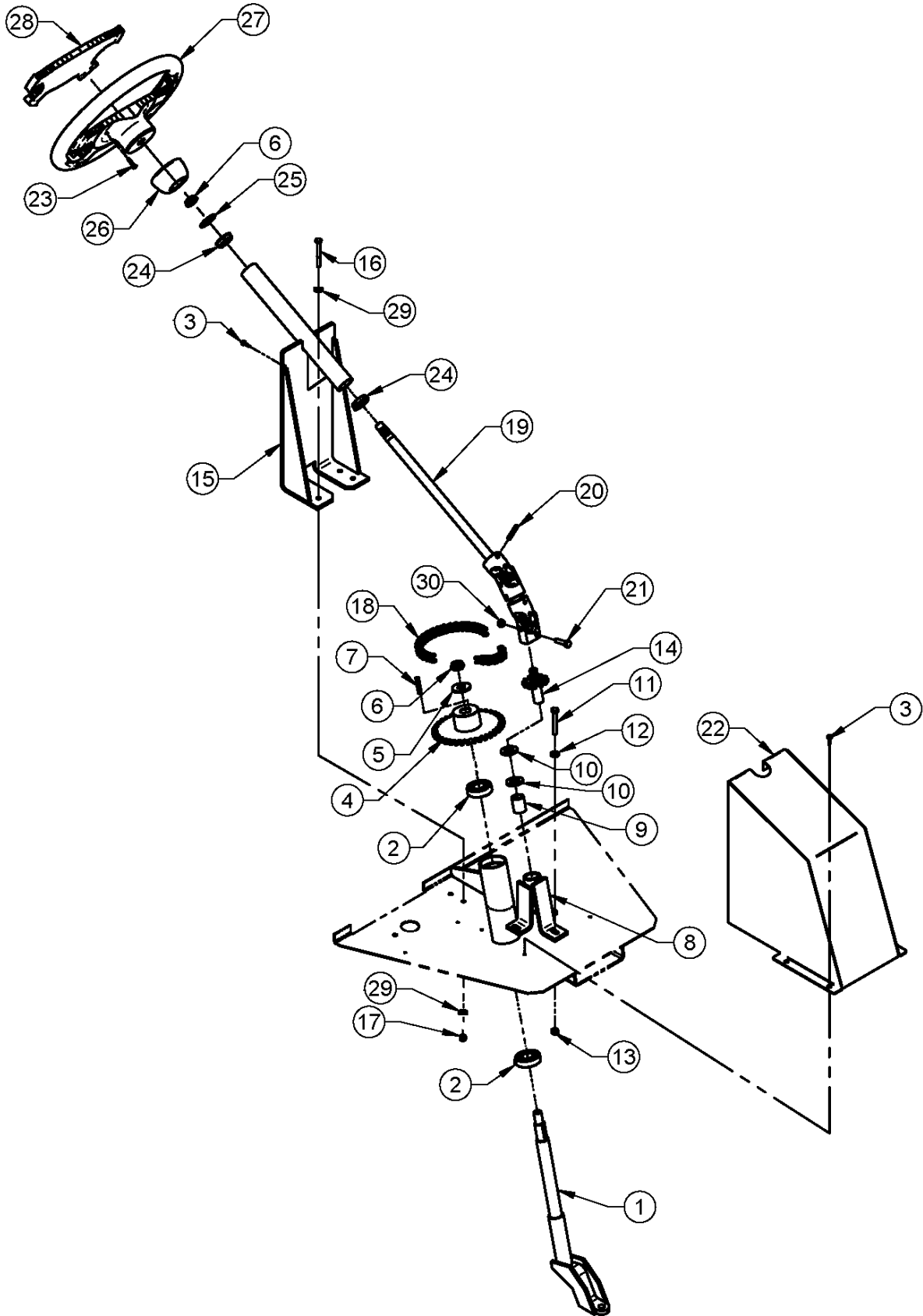
FRONT AXLE 4 WHEEL – EX



FRONT AXLE 4 WHEEL – EX (Cont.)

ITEM	CPC P/N	DESCRIPTION	QTY	SEATS P/N
1	58427-04	WLDMT, EX-21 TRUNNION	1	307586
2	9083	BUSHING, .751 X .878 X 1.25 OILITE	6	719961
3	9800	GREASE FITTING, 1/4"-28, SELF-TAPPING	2	709110
4	6042	WASHER, NEEDLE THRUST	4	709217
5	9085	BEARING TORRINGTON NEEDLE THRUST	2	719962
6	11100	O-RING, #332, 1-1/4 X 1/4	2	709218
7	58664-04	WELDM'T, STEERING SPINDLE - LH, EX 21	1	307587
8	44800-11	KINGPIN ASSY	2	306093
9	7513	NUT, 3/4-16 GR A NTE STYLE JAM NYLON	2	719861
10	57063-96	ASSY, TIE ROD END - 1/2-20 RH THD	1	709761
11	7812-W	NUT, 1/2-20 GR A NE NYLON INSERT YWZ	2	719907
12	7644	NUT, 1/2-20 GR 2 HEX JAM YWZC	1	719873
13	58616-04	LINK, TIE ROD - LONG	1	509770
14	7520	NUT, 1/2-20 GR 2 HEX JAM YWZC - LH THD	1	719360
15	58605-04	ASSY, TIE ROD END, LH THREAD	1	719343
16	58663-04	WELDM'T, STEERING SPINDLE - RH, EX 21	1	307588

WHEEL STEERING - EX

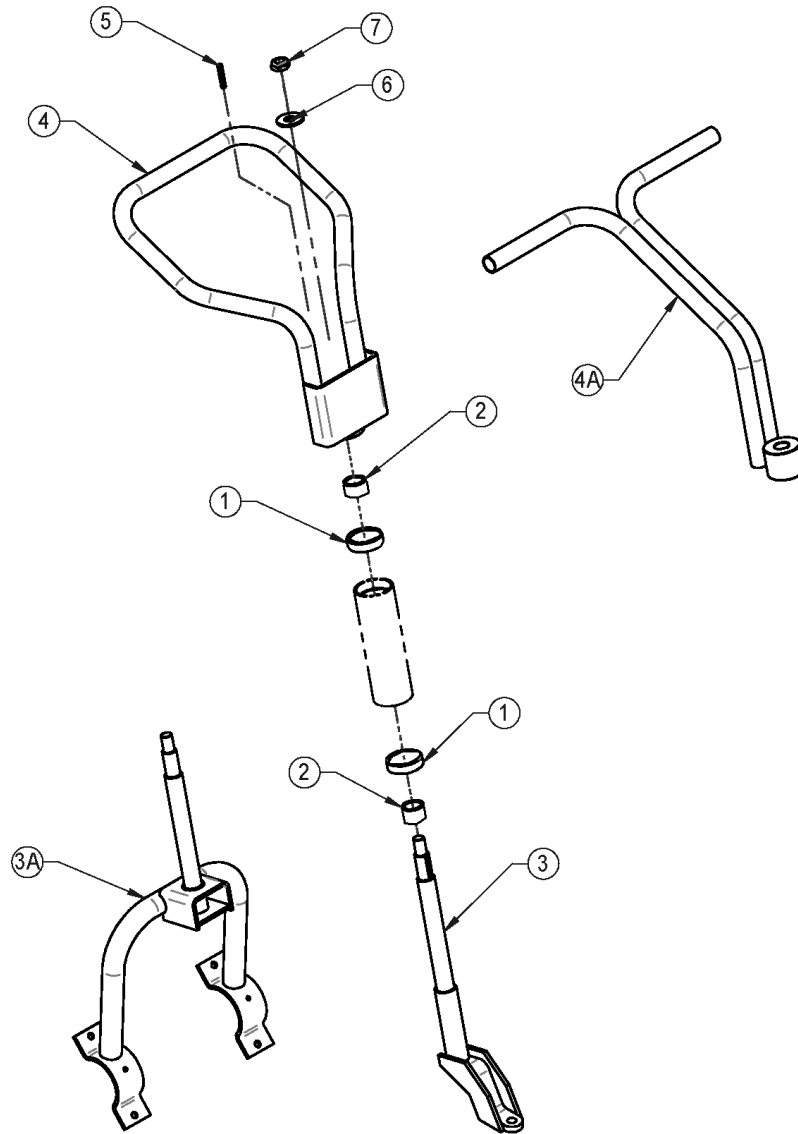


WHEEL STEERING – EX (Cont.)

ITEM	CPC P/N	DESCRIPTION	QTY	SEATS P/N
1	45560-04	EX-21 FRNT FORK WLDMNT (4 WHEEL OPTION)	1	307590
2	27011-07	NYLON BEARING ASSY	2	191530U
3	2685-W	SCREW,10-24X5/8, HWH TRD ROL	6	719586
4	57107-00	SPROCKET STEERING	1	306438
5	6655-B	WASHER FLT STL 9/16 STD UNHARD BLK	1	719808
6	7995	NUT, 5/8-18 GR A NTE NYLON JAM INSERT	2	719919
7	41204-63A	KEY, SQUARE PL, 3/16 X 1-7/16	1	719656
8	57047-00	TRIPOD, STEERING	1	309113
9	57351-95	BUSHING NYLON NN1216-20	1	719765
10	57363-95	WASHER FLAT NYLON .76 ID 1.42 OD	2	719767
11	3419	SCREW, 5/16-18 X 2-1/4 HH	3	719616
12	6702-B	WASHER FLT STL 5/16 BLK MAXCOAT	3	719810
13	7739	NUT, 5/16-18, NE, NYLON INSERT, GA, YWZC	4	719892
14	57106-00	SPROCKET PINION STEERING	1	306437
15	57046-00	WELDM'T, COLUMN, STEERING - EX 21	1	307288
16	2821	SCREW, 1/4-20 X 2-1/4, HHCS, G5, YW ZC	4	719590
17	7686	NUT 1/4-20 GR A NE NYLON INSERT LCK	4	719879
18	57241-00	CHAIN, STEERING WHL - EX21/TE31 (23 LK)	1	463497
19	57105-08	SHAFT, STEERING - EX 21	1	512440
20	388	ROLL PIN, 1/4 X 2 "	3	719639
21	57111-11	SCREW, 5/16-18 X 1 1/2 GRD 8 HHC	1	781924
22	57024-00	WELDM'T, STRG COL GUARD - EX21/TE31	1	307292
23	2641	SCREW, #10 X 1, PPH, TAPPING , T-A BLACK	2	729263
24	9029	BALL BEARING,.75 ID	2	709023
25	6656	BUSHING 3/4 X 1-1/2 X 14GA WIDE RIM YWZ	1	719809
26	57098-98	STEERING HUB COVER	1	709085
27	57069-84	STEERING WHEEL, SPORT	1	709056
28	57089-99	SCORECARD HOLDER	1	709043
29	6703-B	WASHER 1/4	8	719811
30	7525	NUT, 5/16-18 SERRATED FLANGE LOCK	1	719864

* NOT SHOWN

TILLER STEERING - EX



ITEM	CPC P/N	DESCRIPTION	QTY	SEATS P/N
1	36672-07	BEARING REDUCER	2	759894
2	36671-07	IGUS FLANGE BEARING	2	759893
3	45560-04	WELDM'T, FORK - FRONT, EX 21	1	307590
3A	45530-96	FRONT FORK WELDM'T -EX-21	1	304602
4	57036-96	EXPEDITER TILLER BAR WELD.	1	304581
4A	57038-99	EXPEDITER HANDLE BAR WLDMNT	1	305644
5	41204-63A	KEY, SQUARE PL, 3/16 X 1-7/16	1	719656
6	6655-B	WASHER FLT STL 9/16 STD UNHARD BLK	1	719808
7	7995	NUT, 5/16-18 GR A NTE NYLON JAM INSERT	1	719919
*8	57040-99	HANDLEBAR GRIPS (Used with Item 4A)	2	709542
9	27011-07	KIT, BEARING ASSY (Includes Items 1 & 2)	1	191530U

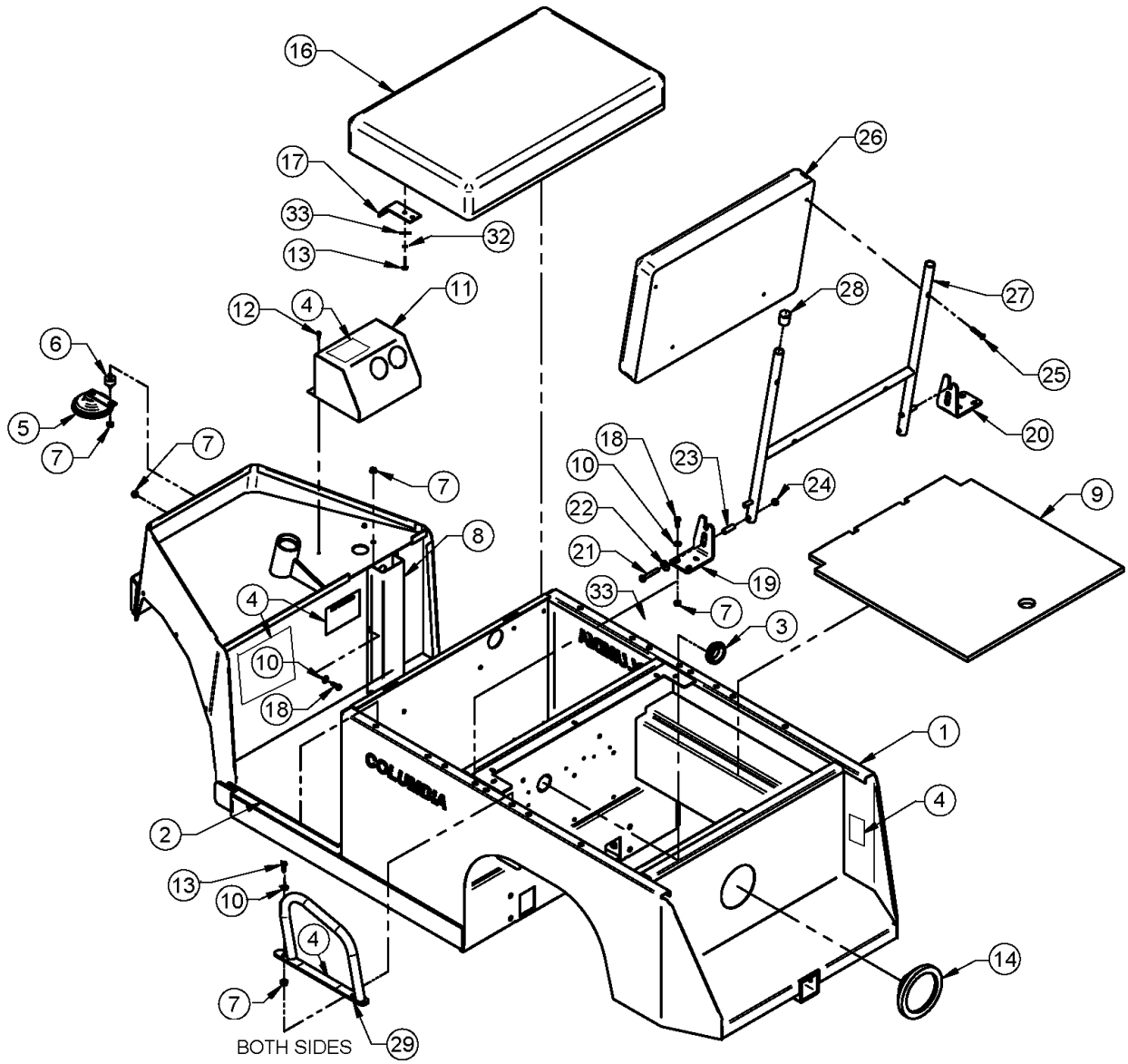
* NOT SHOWN

Expediter Parts Manual

Section 3

Body, Seats, Bumper

BODY & SEATS - EX



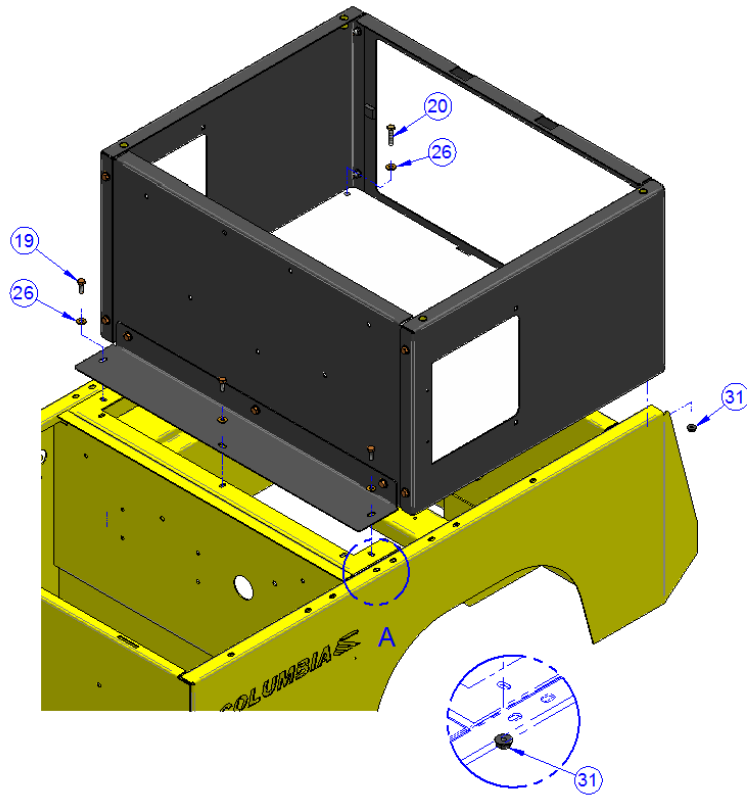
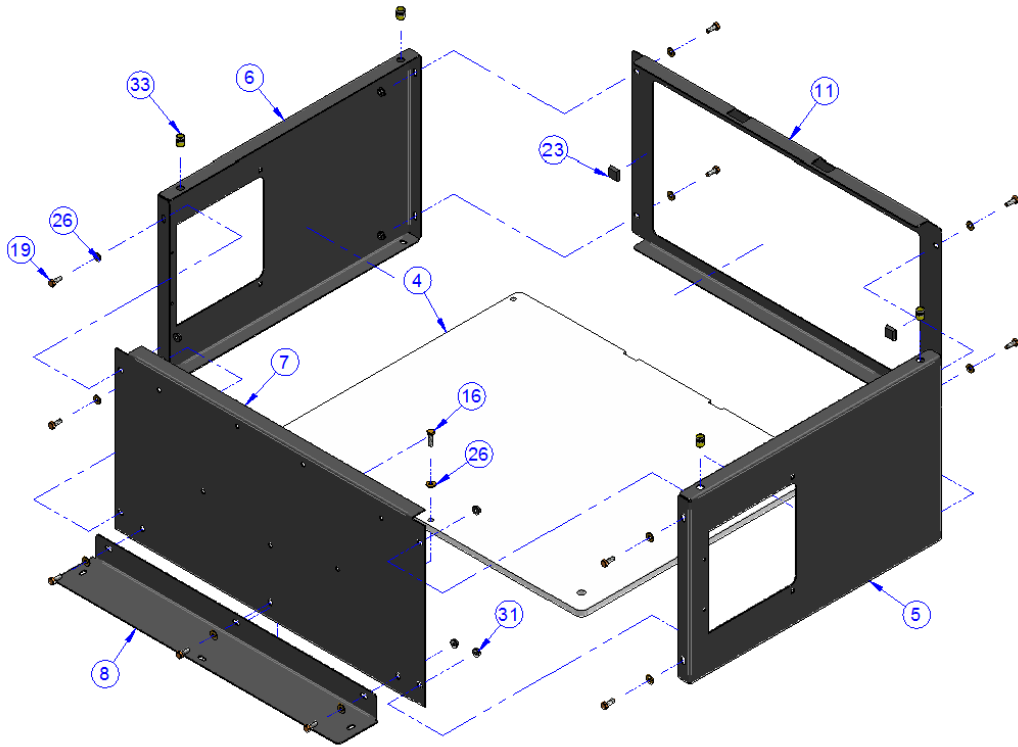
BODY & SEATS – EX (Cont.)

ITEM	CPC P/N	DESCRIPTION	QTY	SEATS P/N
1	N/A	WELDM'T, CHASSIS - EX 21	1	307045
2	50710-96	MAT, FLOOR	1	709702
3	11418-A	GROMMET, 2775 EPDM 3/16 GROVE	1	719523
4	53282-96	DECAL, LABEL SET (See Page 3-9 for details)	1	709703
5	69001-76A	HORN, 12V (2 TERMINAL)	1	709089
6	11452-96	BUMPER, STUD, RUBBER	1	709204
7	7724-B	NUT 1/4-20 GR A SERRATED FLNG LOCK	14	719887
8	47959-04	COVER - COWL WIRING	1	509633
9	90752-96	DECK BOARD, MEZZ 22.50" X 20.87" "	1	513689
10	6703-B	WASHER FLT STL 1/4 SAE UNHARD BLK	12	719811
11	47950-97	WELDM'T, CONSOLE - EX 21	1	307501
12	2653-B	SCREW,10-16X3/4,HEX-,WSH-HD,TEK	2	719583
13	2003-B	SCREW, 1/4-20X3/4	8	719636
14	68020-92	4" RND TAIL LAMP ASSY W/PLUG	1	709109
15	7525	LOCKNUT, 5/16-18 HEX FLG WHIZ	8	719864
16	52980-96	SEAT CUSHION W/O SWITCH (See Note)	1	104518%
16A*	52999-04	SEAT CUSH W/ OPRT PRESENCE (See Note)	1	107787%
16B*	51706-04	SEAT SWITCH	1	308483
17	52978-01	TAB, SEAT - FOLDING, W/ LOCK	2	510033
18	3787-B	SCREW, HEX HEAD CAP 1/4-20 X 3/4 G5	8	719636
19	51720-04	PLATE, MTG - SEATBACK, LH	1	509634
20	51721-04	PLATE, MTG - SEATBACK, RH	1	509635
21	2667	SCREW, 5/16-18 X 2 GRD 5 HHC YEL 150 "	2	719585
22	6830	WASHER FLAT NYLON	2	719816
23	52988-96	BUSHING, SEAT ADJUST	2	719742
24	7739	NUT, 5/16-18, NE, NYLON INSERT, GA, YWZC	2	719892
25	2367	SCREW, 1/4-20 X 1-1/2, POH, M/S, BLK ZC	4	708590
26	52981-96	CUSHION, BACK - EX 21	1	1045172832838
27	52983-96	FRAME, BACK - EX 21	1	304516
28	22370-96	END CAP PLUG, SEATBACK - EX 21	2	729161
29	50027-92	HANDRAIL WELDM'T, EXT BED UTIL	4	303393
30	3991	SCREW, HEX HEAD CAP 5/16-18 X 7/8 G5	8	719643
31	71527-04	DECAL, SWITCH SET POSITION (See Page 3-9 for details)	1	719426
32	7036-B	WASHER, LOCK 1/4	4	719834
33	6703-B	WASHER 1/4	4	719811
34*	47960-03	RH FENDER (Uses Items 34 & 35)	1	467434
35*	47961-03	LH FENDER	1	467435
36*	2653-B	SCREW,10-16X3/4,HEX-,WSH-HD,TEK	6	719583
37*	6716	WASHER # 10	6	719812
38*	51706-04	SEAT SWITCH ASSEMBLY	1	308483
39	53293-14	DECAL, PARKING BRAKE (See Page 3-9 for details)	1	761046

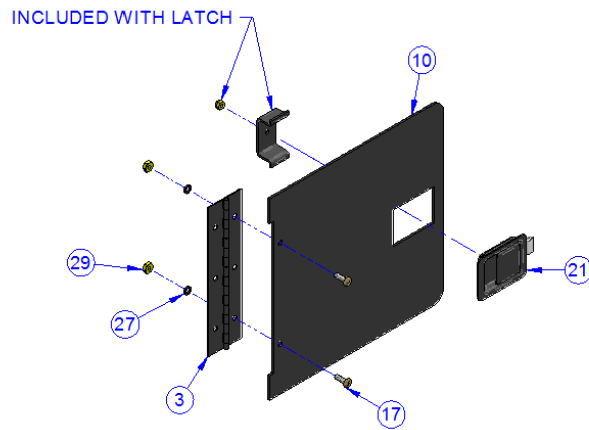
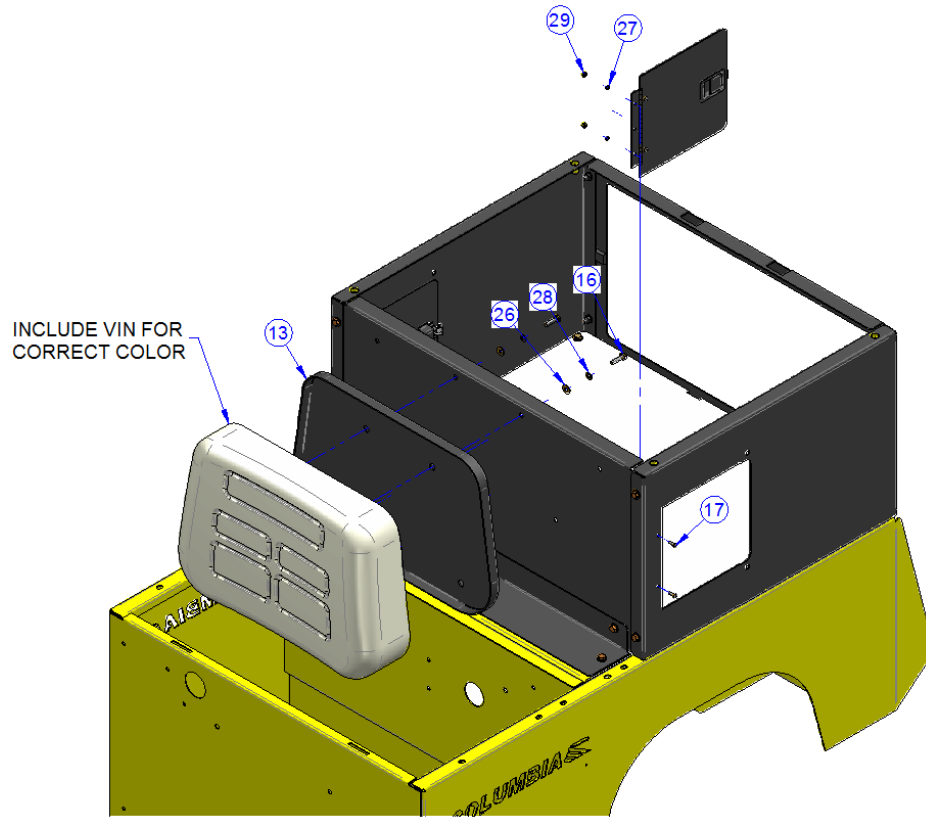
* NOT SHOWN

NOTE: Include VIN to ensure proper color.

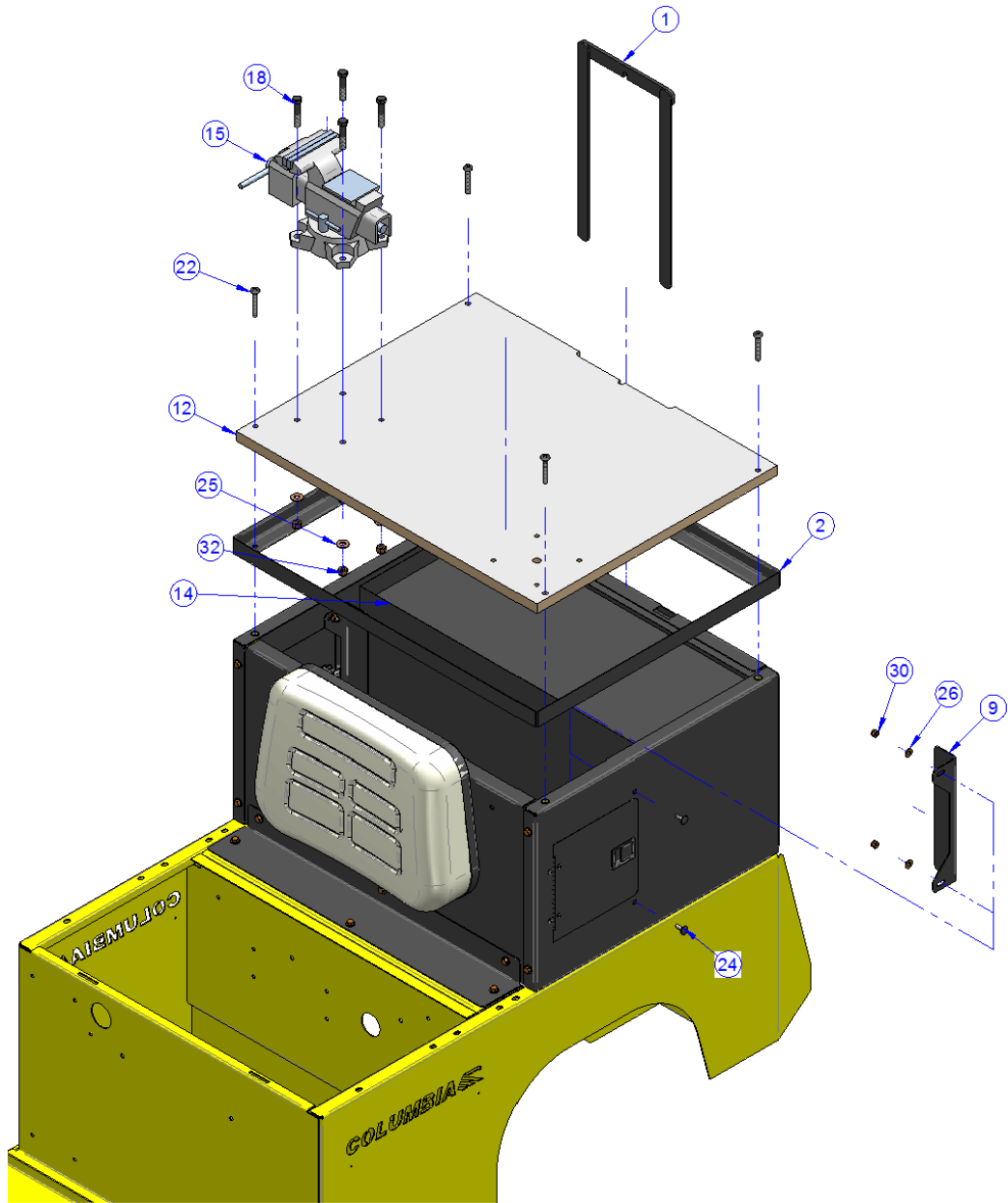
BODY - TE31



BODY – TE31 (Cont.)



BODY – TE31 (Cont.)

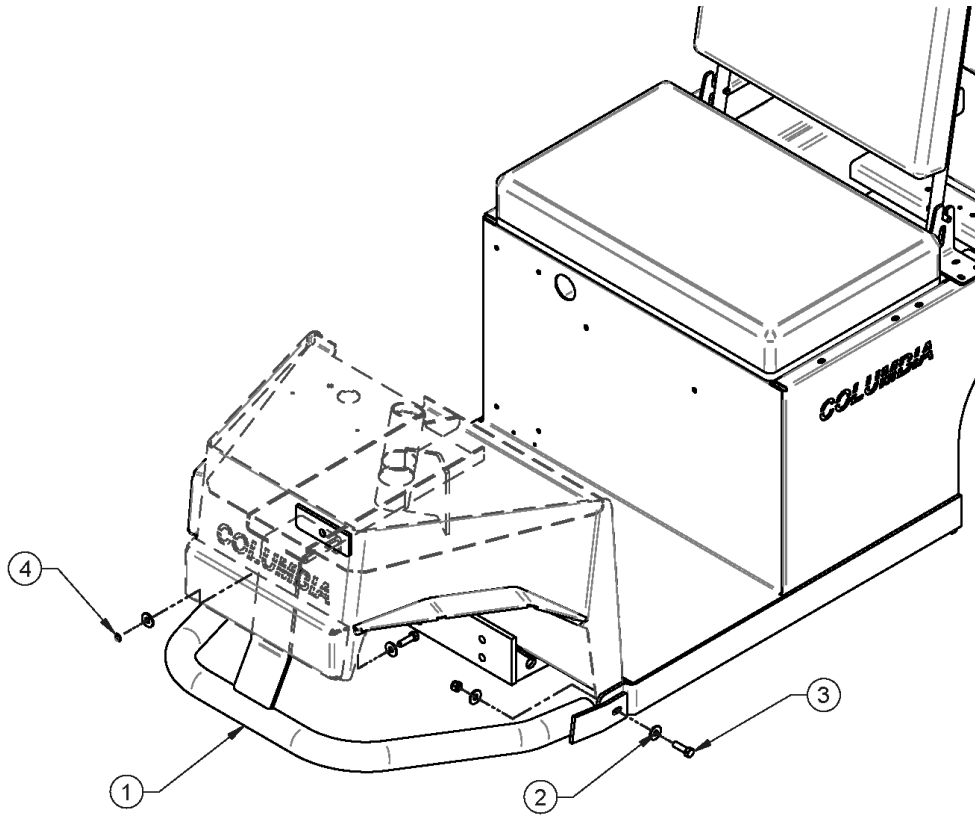


BODY – TE31 (Cont.)

ITEM	CPC P/N	DESCRIPTION	QTY	SEATS P/N
1	*	LOCKING BAR	1	305435
2	*	FRAME	1	305437
3	52990-96	SEAT HINGE	2	309105
4	*	LOWER DECK BOARD,	1	509992
5	*	LH SIDE PANEL	1	509993
6	*	RH SIDE PANEL	1	509994
7	*	BACK PANEL	1	509995
8	*	SUPPORT BRACKET	1	509996
9	*	DOOR STOP BRACKET	2	509998
10	*	DOOR	2	509999
11	*	FRONT PANEL	1	510034
12	60068-09	DECK MEZZTREAD	1	513017
13	52948-96	SEAT BACK COVER	1	709025
14	50951-98	TOOL BOX	1	709947
15	65270-98	WISE	1	709950
16	2551-W	SCREW, 1/4-20X1, HHC	4	719564
17	2612-B	SCREW, #8-32X1/2 PPH, M/S, 18-8	8	719571
18	3775	SCREW, 3/8-16X2 HHC, G5	4	719634
19	3787-B	SCREW, 1/4-20X3/4 HHC	14	719636
20	3993	SCREW, 1/4-20X1 1/4, HHC	2	719644
21	50600-98	LATCH PADDLE	2	719724
22	5207-BS	SCREW, 5/16-18X2 PPH	4	719730
23	52330-86	BUMPER, BLACK	2	719738
24	5405-B	SCREW, 1/4-20X3/4 CARRIAGE	4	719747
25	6000-B	WASHER, 5/16	4	719771
26	6703-B	WASHER, 1/4	24	719811
27	7015-B	WASHER, #8 LOCK	8	719833
28	7036-B	WASHER, 1/4, LOCK	3	719834
29	7608-B	NUT, #8, HEX	8	719867
30	7686	NUT 1/4-20, NYLOCK	4	719879
31	7724-B	NUT, 1/4-20 SERR FLNG LOCK	17	719887
32	7778	NUT, 3/8-16 NYLOCK	4	719902
33	8206	THREADED INSERT, 5/16-18	4	719929

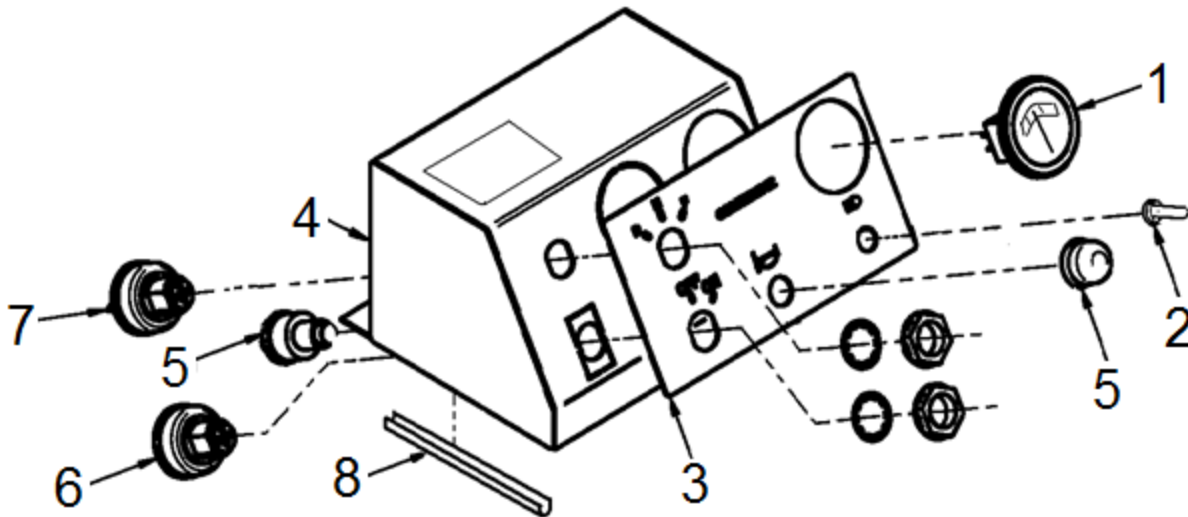
* SPECIAL ORDER

FRONT BUMPER 3 WHEEL – EX



ITEM	CPC P/N	DESCRIPTION	QTY	SEATS P/N
1	44924-05	FRONT BUMPER	1	307830
	6416	WASHER 3/8	6	719796
	4716-W	SCREW 3/8-16X1 1/4 HHC	3	719694
	7778	NUT 3/6-16 NYLOCK	3	719902
5	44925-05	KIT, FRONT BUMPER	1	190467U

CONSOL - EX



ITEM	CPC P/N	DESCRIPTION	QTY	SEATS P/N
1	75063-07	BDI METER - 24V	1	759873
1A	75061-07	BDI METER - 48V	1	759842
2	72000-10	SWITCH, TOGGLE ON OFF	1	760600
3	33792-08	DECAL, DASH WITH STATUS LIGHT (See Page 3-9 for details)	1	712083
*	75033-91A	HOUR METER, 10-80 VDC (If equipper, located to the left of Item 1)	1	709452
4	47950-97	WELDM'T, CONSOLE - EX 21	1	307501
5	71807-80	SWITCH, HORN	1	709385
6	71732-06	POWER SWITCH	1	759706
7	71730-01	DIRECTION SWITCH	1	719432
8	29284-04	MOLDING, BLACK (Both sides)	.167'	719355
*	71767-05	ASSY, KEY, NON-REMOVABLE COVER (Used only with Keyset A)	1	719432

* NOT SHOWN

KEYSET	3 POSITION POWERSWITCH		2 POSITION POWERSWITCH		STANDARD KEYS	
	CPC P/N	SI P/N	CPC P/N	SI P/N	CPC P/N	SI P/N
A	71730-01	709040	71732-06	759706	71731-01	749184
B	71730-03B	719297	71732-06B	759722	71731-03B	719301
C	71730-03C	719298	71732-06C	759723	71731-03C	719302
D	71730-03D	719299	71732-06D	759724	71731-03D	719303
E	71730-03E	719300	71732-06E	759721	71731-03E	719304

DECALS – EX21

NOTE: Some decal colors have not been shown

⚠ WARNING

DANGER OF FIRE, EXPLOSION OR ELECTRIC SHOCK

DO NOT OPERATE CHARGER IF A.C. OR D.C. CORDS, PLUGS OR RECEPTACLES ARE WORN, DAMAGED, LOOSE OR FEEL HOTTER THAN USUAL. REPLACE ALL WORN OR DAMAGED PARTS IMMEDIATELY.

REMOVE PLUG BY GRASPING PLUG HANDLE AND PULLING PLUG DIRECTLY OUT OF RECEPTACLE.

CHARGER MUST BE CONNECTED TO GROUNDED 3 WIRE A.C. RECEPTACLE OF THE VOLTAGE SPECIFIED ON THE CHARGER AND PROTECTED BY A DEDEDICATED BREAKER WITH A MAXIMUM RATING OF 15 AMPS.

USE IN WELL VENTILATED AREA. ELECTRICAL ARCING COULD IGNITE HYDROGEN GAS.

DO NOT EXPOSE CHARGER TO RAIN, SNOW OR LIQUIDS. DO NOT BLOCK COOLING VENTS.

KEEP SPARKS, OPEN FLAME AND SMOKING MATERIALS AWAY FROM BATTERIES. ALWAYS SHIELD EYES WHEN WORKING ON BATTERIES.

⚠ WARNING

For personal safety and to maintain vehicle stability and control, operate this vehicle under these conditions only. Failure to comply with these warnings may result in bodily injury and property damage.

- Before operating this vehicle, read the owners manual.
- Do not operate while under the influence of alcohol or drugs.
- Operation from operators seat by authorized persons only and only in designated areas.
- Vehicle restricted to two occupants and maximum capacity of people and cargo of 750 pounds (340 kg.).
- Never exceed rated capacity.
- Do not start until all occupants are seated. Remain seated and hold on when vehicle is moving. Keep entire body inside vehicle.
- Set parking brake and turn key to OFF before leaving vehicle. Remove key if vehicle is unattended.
- Drive slowly straight up and down slopes and in turns. Use caution while turning or backing up vehicle.

OPERATING INSTRUCTIONS

- Select forward or reverse by turning key switch.
- Depress accelerator to move vehicle. Motor stops when accelerator is released.
- Depress brake to slow or stop vehicle.
- Lock parking brake when stopped. To lock, apply pressure to brake and tilt top forward. Brake releases by applying pressure to rear of pedal.

⚠ WARNING

NO STANDING PASSENGERS

USE HAND HOLDS

PWR SW TA (BLANK)

SD TA (BLANK)

HVALT 10A STROBE 10A

IMPORTANT:

IF VEHICLE IS TRANSPORTED AND/OR STORED FOR MORE THAN 5 DAYS, SET THE POWER SWITCH, LOCATED ON THE DASH PANEL, TO THE OFF POSITION. (IF LEFT IN THE ON POSITION, SEVERE DISCHARGE AND/OR BATTERY DAMAGE COULD RESULT.)

How to Apply the Parking Brake:

1 Press foot on "STOP" pedal

2 Roll foot forward

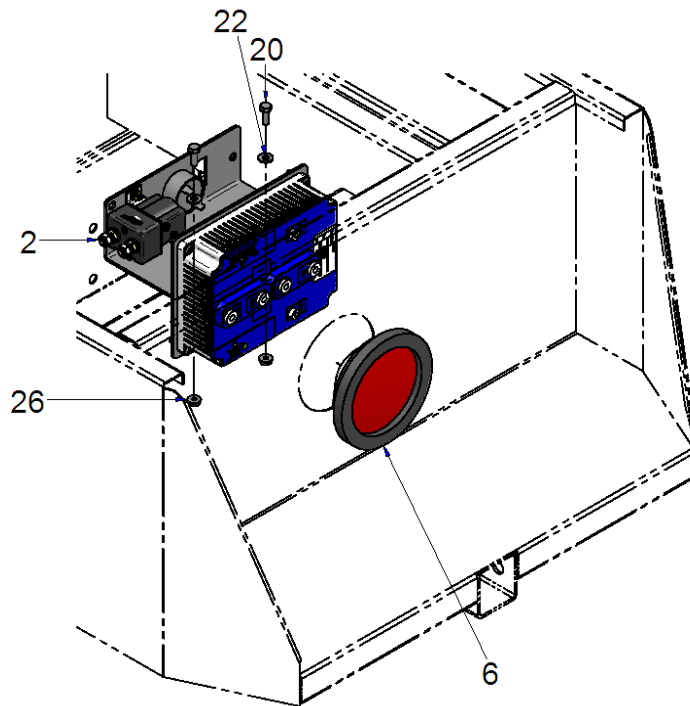
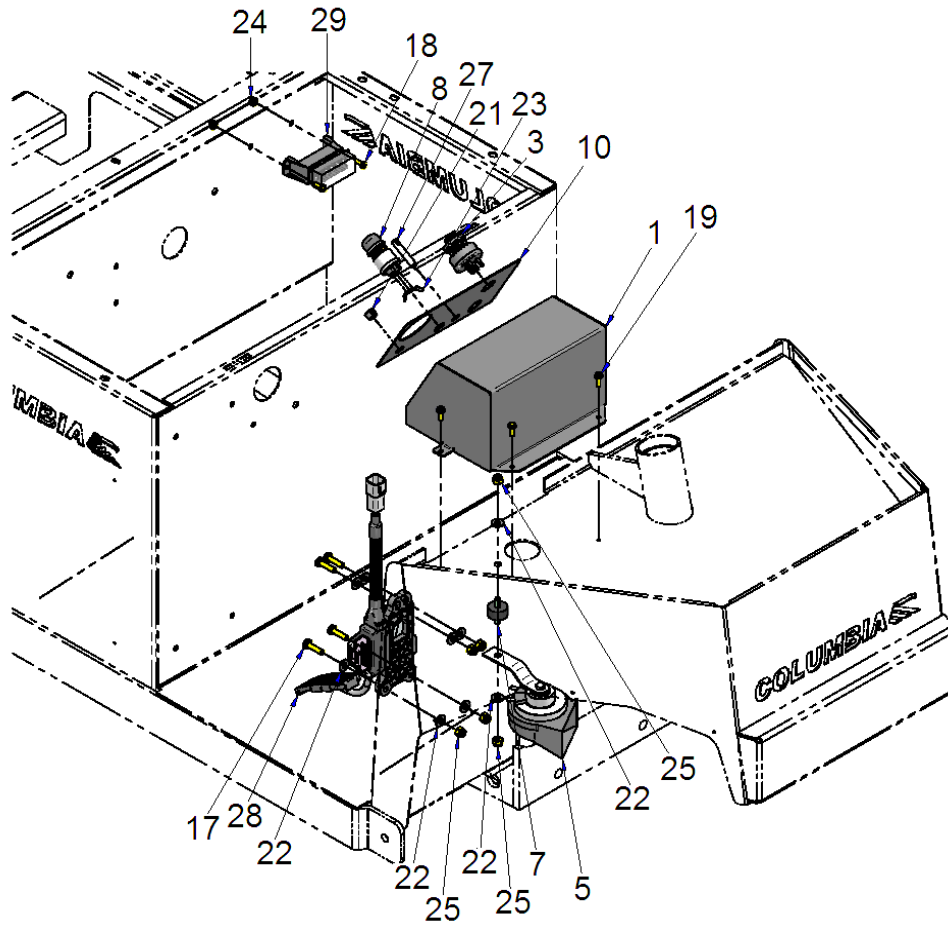
To Release: Press base of "STOP" pedal

ITEM	CPC P/N	DESCRIPTION	QTY	SEATS P/N
1	71527-04	DECAL, SWITCH SET POSITION	1	719426
2	33792-08	DECAL, DASH W/SYSTEM STATUS INDICATOR	1	712083
3	53282-96	DECAL, LABEL SET (See note)	1	709703
4	53293-14	DECAL, PARKING BRAKE	1	761046

NOTE:

This set will contain 2 each of the USED HAND HOLD and NO STANDING PASSENGERS warning labels.

ACE+ CONTROLLER W/FUSE BLOCK – EX21



ACE+ CONTROLLER W/FUSE BLOCK – EX21 (Cont.)

ITEM	CPC P/N	DESCRIPTION	QTY	SEATS P/N
1	47950-97	CONSOLE - EX 21	1	307501
2	**	ASSY, ACE+ PANEL (FUSE BLOCK). EX21	1	467939
3	71730-01	KEYSWITCH, UNIVERSAL "A" W/HARDWARE	1	709040
4*	11423	RESILIENT BUMPER- ELEC MOTOR	1	709050
5	69001-76A	HORN,12V (2 TERMINAL)	1	709089
6	68020-92	4" TAIL LAMP ASSY W/PLUG, SEAL	1	709109
7	11452-96	BUMPER, STUD, RUBBER	1	709204
8	71807-80	HORN SWITCH	1	709385
9*	74596-02	FUSE, 10A ATO/ATC	1	709786
10*	33792-08	DECAL, DASH, EX21 W/STAT INDICATOR	1	712083
11*	69300-03	MOTOR, ELECT., 48V, SEPARATELY, EXCITED	1	719135
12*	50804-10	MOLDING, BLACK, 22	1	719355
13*	71527-04	DECAL, SWITCH SET POSITION	1	719426
14*	75594-04	FUSE, 1 AMP ATO/ATe	2	719444
15*	10008	CABLE TIE, NATURAL 5 3/4"	5	719501
16*	10020	CABLE TIE MOUNTING BRACKET 4A	2	719503
17	2551-W	SCREW, 1/4-20 X 1, HHCS, G5, YWZC 150	4	719564
18	2592	SCREW, 10-24 X 1/2 PHILLIPS PHM	2	719566
19	2685-W	SCREW. 10-24 X 5/8 HWH TRO ROL	3	719586
20	3787-B	SCREW , 1/4-20X3/4,HHCS ,G5,BLK 150	4	719636
21	653	PLUG 1/2 HOLE BLACK HEYCO #2643	1	719798
22	6703-B	WASHER,1/4,SAE,FN-I,BLK MAX	12	719811
23	32675-08	TERMINAL,#10 STUD-TO-1/4 MALE TAB	2	719825
24	7624	NUT 10-24 GR A NM MACH NYLON LOCK	2	719870
25	7686	NUT, 1/4 -20, NYLOCK, GA, YWZC	6	719879
26	7724-B	NUT 1/4-20 GR A SERRATED FLNG LOCK	4	719887
27	67791-08	INDICATOR, LED, SERIES 22	1	759932
28	40610-10	PEDAL ASSEMBLY, ACCELERATOR &	1	760635
29	69601-12	FUSE BLOCK, 6-WA Y	1	760764
30*	**	HARNESS, 12V ACCESSORY	1	760838
-	N/A	ACE+ W/FUSE BLOCK (Includes above)	1	192571A

* NOT SHOWN

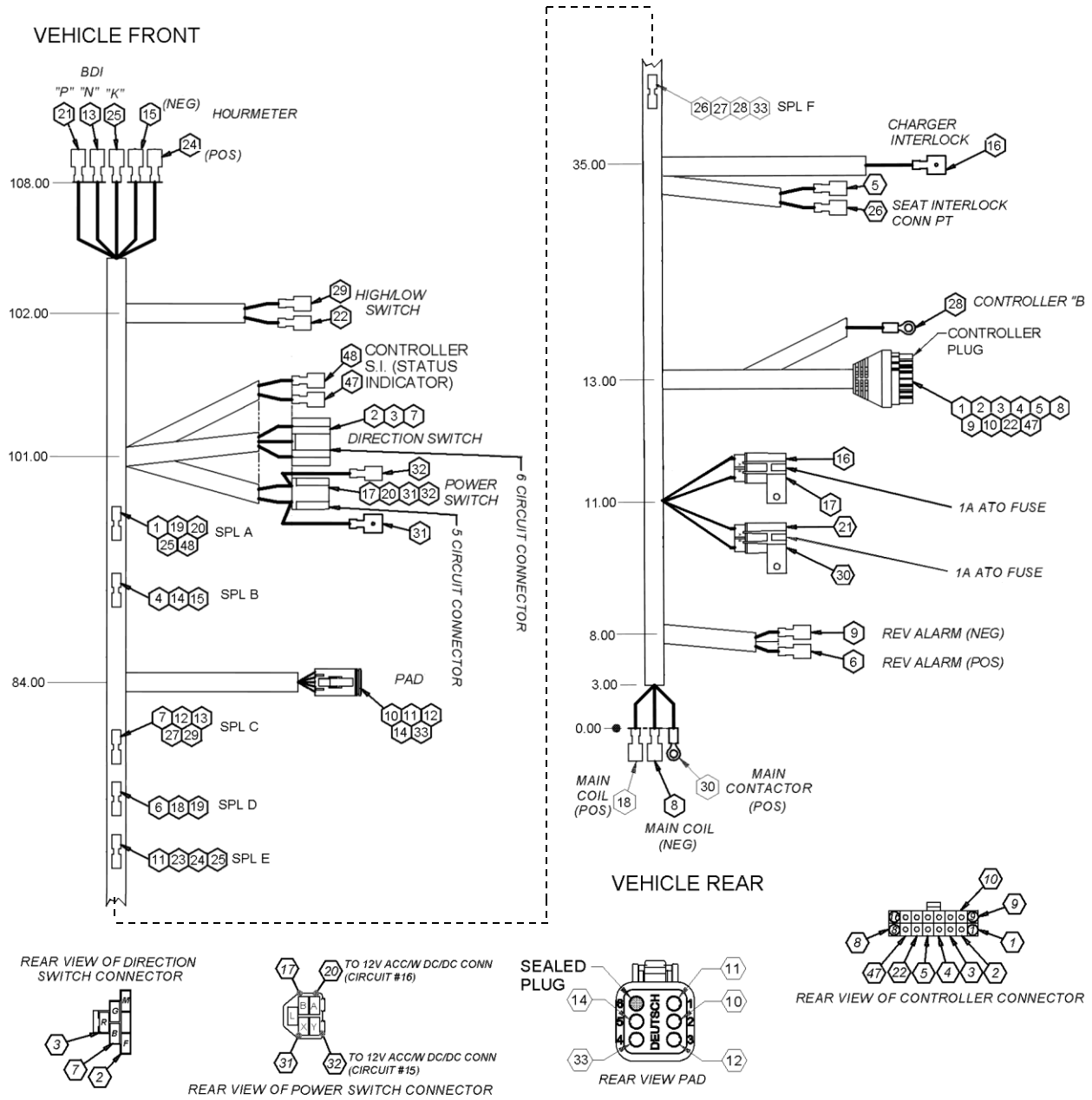
** SPECIAL ORDER

Expediter Parts Manual

Section 4

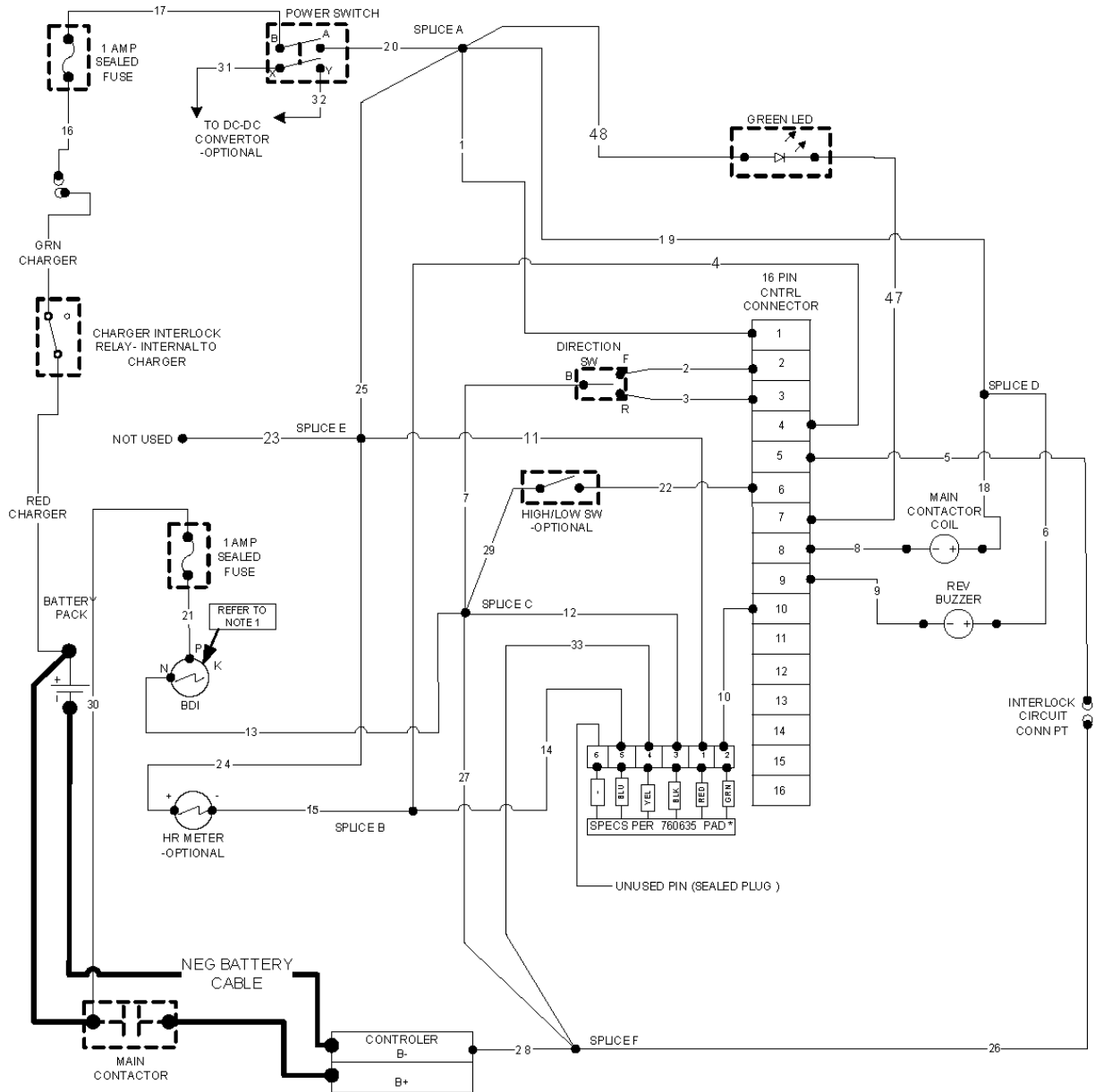
Electrical

MAIN WIRE HARNESS – EX (No fuse block)



CIRCUIT NO.	WIRE COLOR	CIRCUIT NO.	WIRE COLOR	CIRCUIT NO.	WIRE COLOR	CIRCUIT NO.	WIRE COLOR
1	RED	11	RED	21	RED	31	RED
2	GRN	12	BLK	22	BLK	32	RED
3	GRY	13	BLK	23	WHT	33	YEL
4	BLK	14	BLU	24	WHT	47	BLK
5	BLK	15	BLK	25	WHT	48	RED
6	YEL	16	RED	26	BLK		
7	BLK	17	RED	27	BLK		
8	BLK	18	RED	28	BLK		
9	BLK	19	RED	29	BLK		
10	GRN	20	RED	30	RED		

MAIN WIRE HARNESS SCHEMATIC – EX (No fuse block)



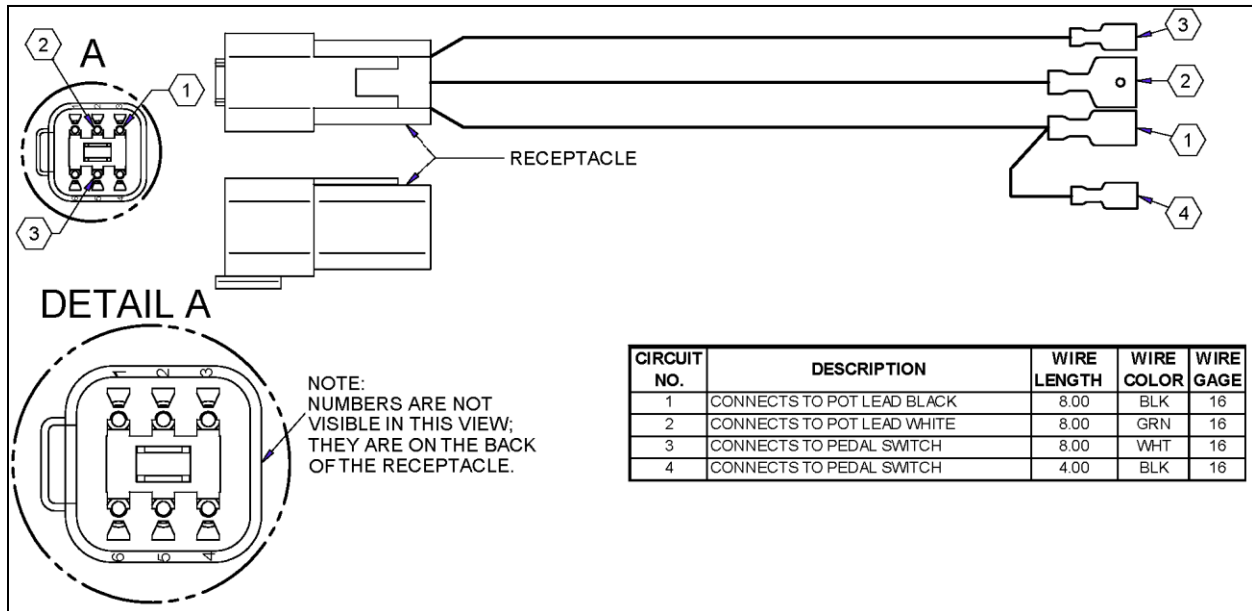
MAIN WIRE HARNESS – EX (No fuse block) (Cont.)

ITEM	CPC P/N	DESCRIPTION	QTY	SEATS P/N
1	75063-07	BDI METER 24V	1	759873
1A	75061-07	BDI METER, 48V	1	759842
2	75033-91A	HOUR METER, 10-80 VDC	1	709452
3	72000-10	HIGH/LOW SPEED SWITCH	1	760600
4	71730-01	DIRECTION SWITCH	1	719432
5	71732-06	POWER SWITCH	1	759706
6	40610-10	PEDAL ASSY, ACCELERATOR & HARNESS	1	760635
7	51706-04	SEAT SWITCH	1	308483
8	-	CHARGER (See Page 4-10)	1	-
9	47895-05A	CONTROLLER (Programmed 760576)	1	467696
10	75594-04	FUSE, 1 AMP ATO/ATC	2	719444
11	71408-96A	AUDIBLE ALARM, 12/48 VDC, SLOW PULSE	1	759831
12	71455-01A	CONTACTOR & MOUNTING BRACKET	1	709166
13*	70105-88	CABLE ASSY, POS/NEG 4GAX37	2	709019
14*	70351-88	CABLE, 4GAX16.75	2	709600
15*	70112-95	CABLE, 4GAX25.5	5	709732
16	70099-88	CABLE ASSY 4GAX8.75	3	709004
17	70082-08	MAIN HARNESS W/PAD	1	760117
18*	70070-07	MAIN HARNESS W/ADAPTER (See note)		467708

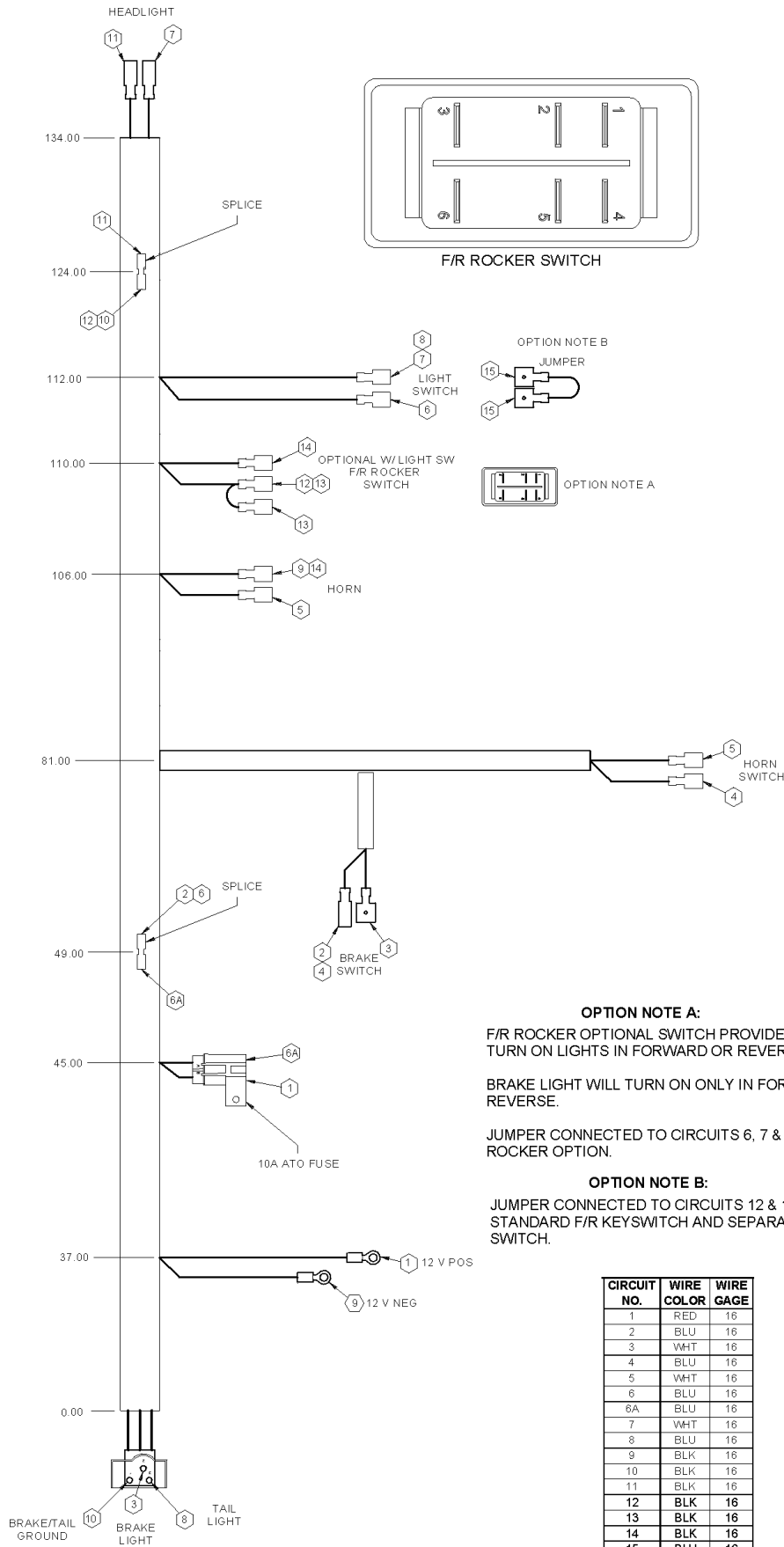
* NOT SHOWN

NOTE:

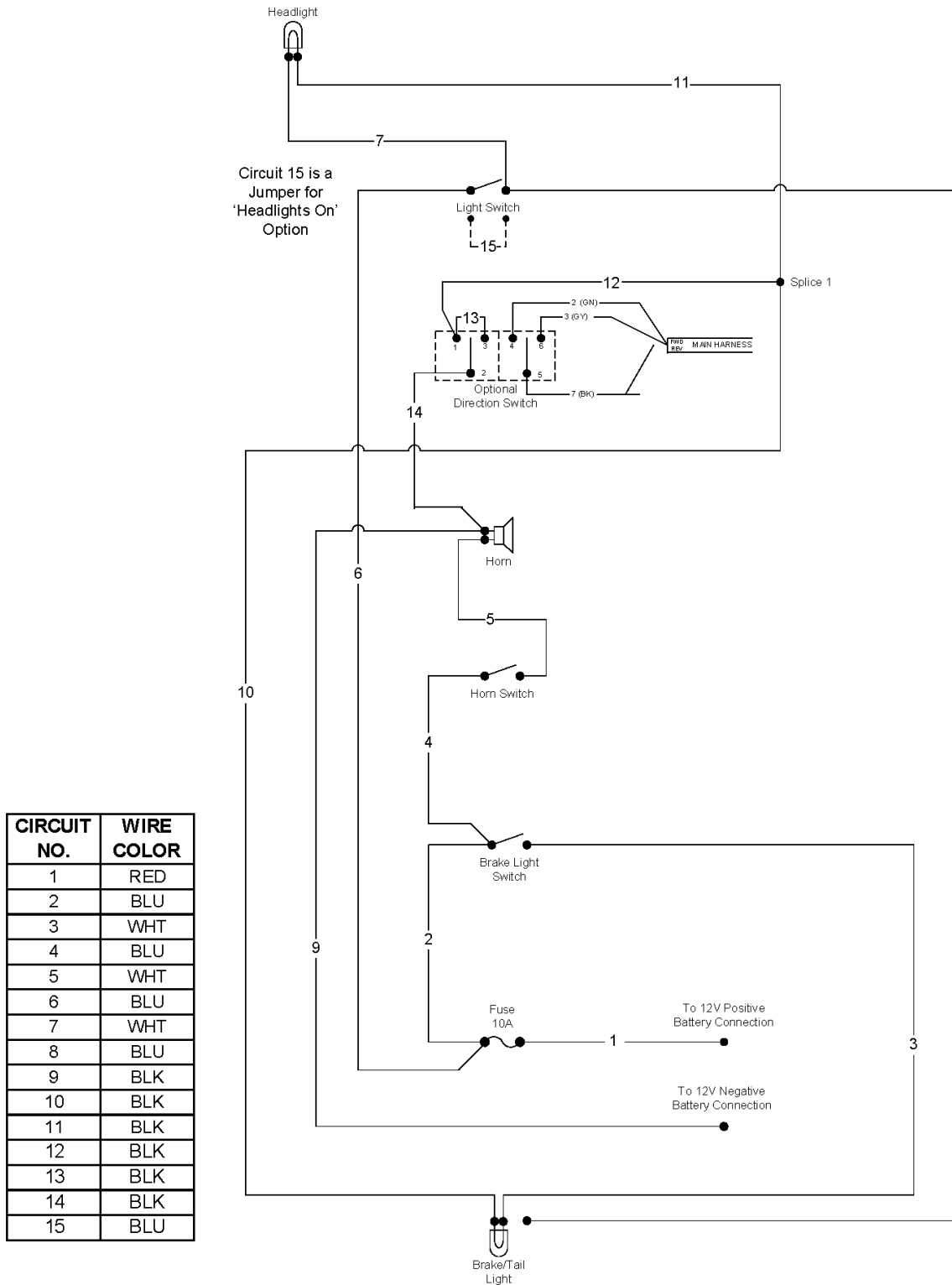
Harness is required for pot box attachment. Part includes main harness (70082-08) and adapter (70084-10) shown below.



ACCESSORY WIRE HARNESS – EX



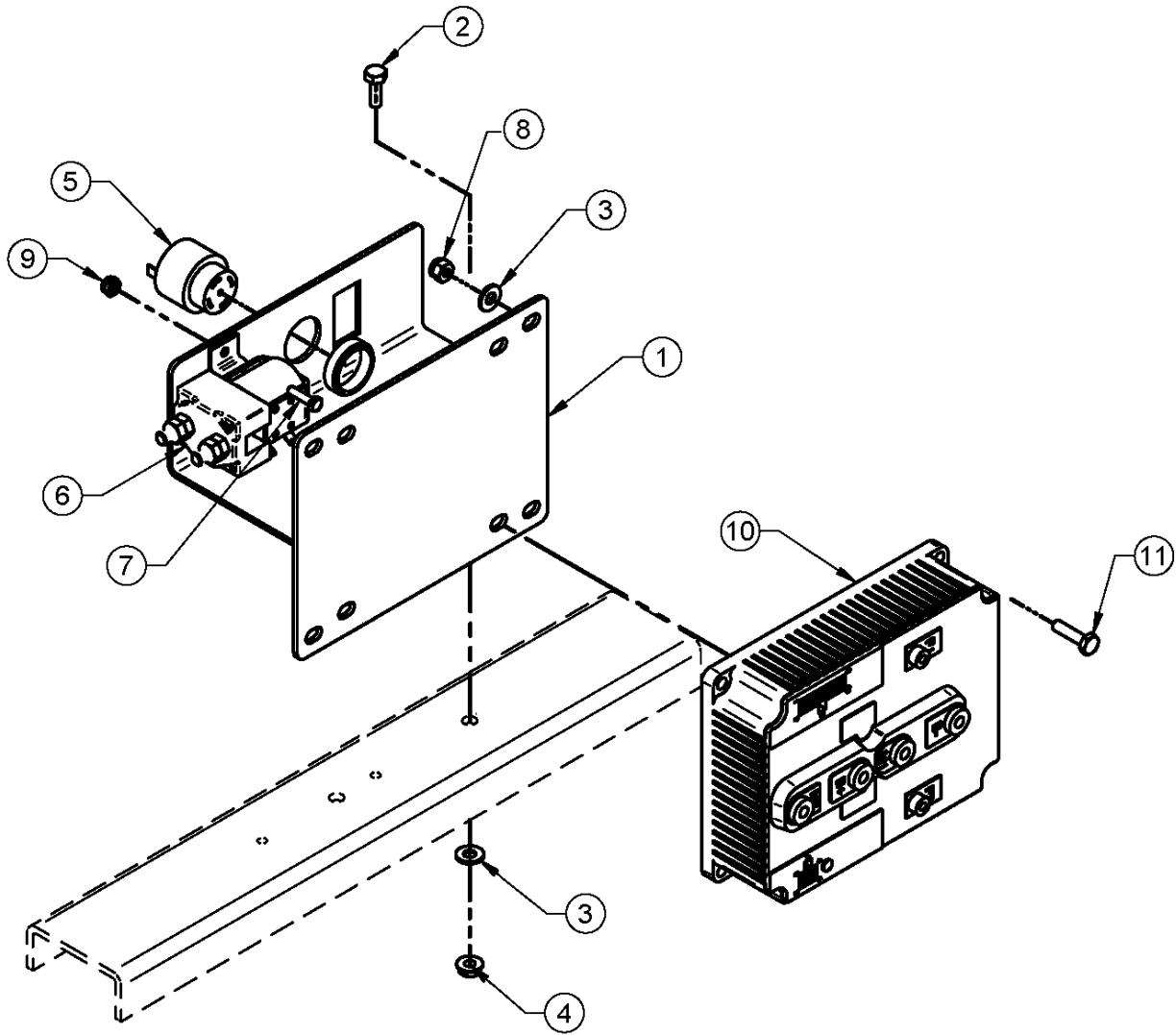
ACCESSORY WIRE HARNESS SCHEMATIC – EX (Cont.)



ACCESSORY WIRE HARNESS – EX (Cont.)

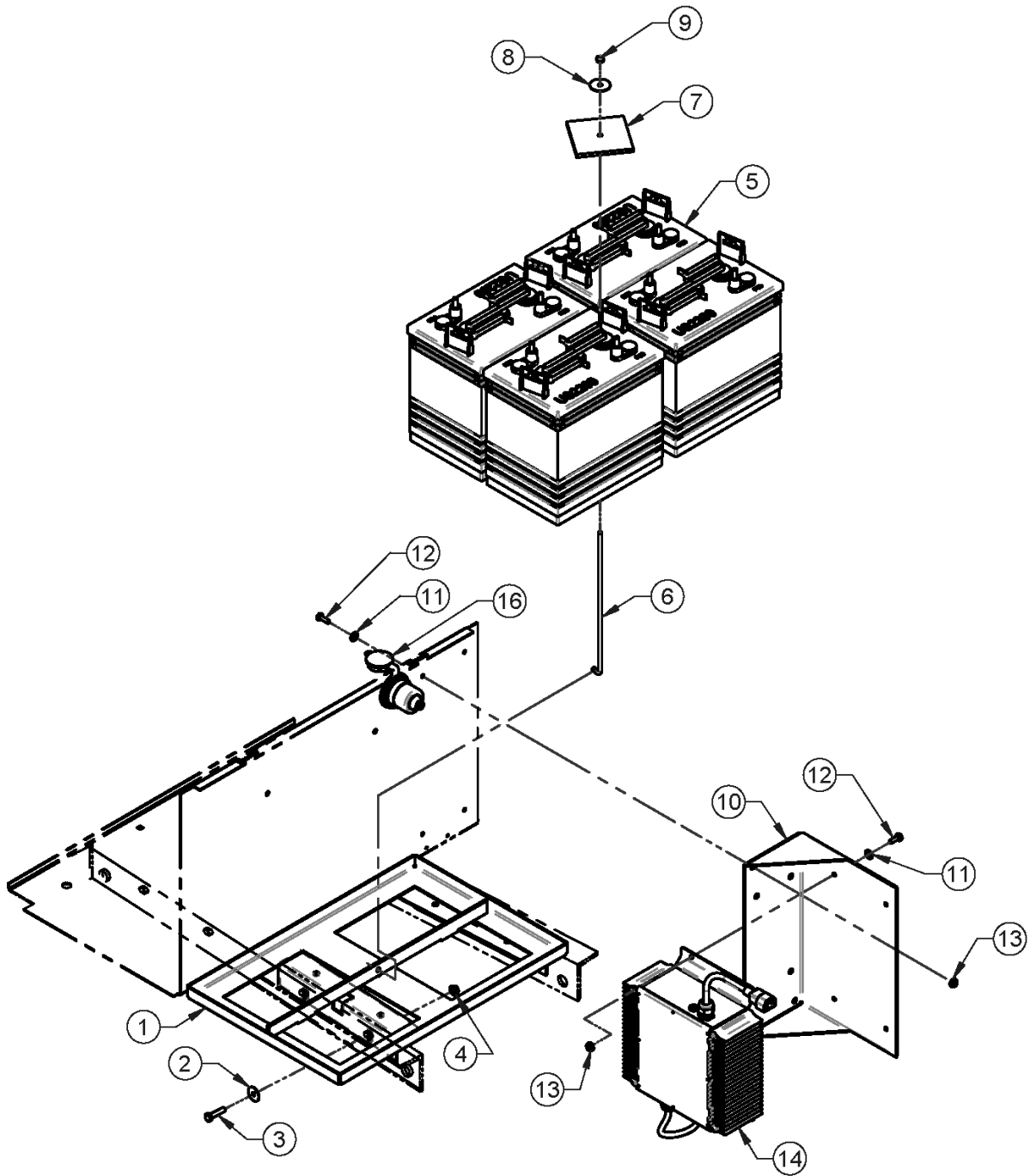
ITEM	CPC P/N	DESCRIPTION	QTY	SEATS P/N
1	67724-91	HEADLIGHT	2	709389
2	72000-10	SWITCH, TOGGLE, ON/OFF	1	760600
3	69001-76A	HORN	1	709089
4	71807-80	HORN SWITCH	1	709385
5	68040-96	SWITCH, STOP LAMP	1	709704
6	74596-02	FUSE, 10 AMP ATO/ATC	1	709786
7	68020-92	LIGHT, 4", TAIL LAMP ASSY	1	709109
8	78871-03	OPTIONS WIRE HARNESS, 12V	1	719403
	68828-04	HEADLIGHT KIT		190473U

ELECTRIC CONTROLS – EX



ITEM	CPC P/N	DESCRIPTION	QTY	SEATS P/N
1	43650-04	CONTROLS MTG A/ - EX 21, ACE PLUS	1	307685
2	3787-B	SCREW, HEX HEAD CAP 1/4-20 X 3/4 G5	2	719636
3	6703-B	WASHER FLT STL 1/4 SAE UNHARD BLK	6	719811
4	7724-B	NUT, 1/4-20 SERR FLNG LK NUT	2	719887
5	71408-96A	AUDIBLE ALARM 9/48 V DC	1	759831
6	71455-01A	CONTACTOR W/ MTG BRKT - 24 V (SW80)	1	709166
7	2339	SCR, #10-24 X 5/8 HWHTR	2	719586
8	7686	NUT 1/4-20 GR A NE NYLON INSERT LOCK	4	719879
9	7624	NUT, #10-24 GR A NM MACH NYLON LOCK	2	719870
10	47895-05A	CONTROLLER, REGEN RGEN, 24-4C V (Programmed 760576)	1	467696
11	2551-W	SCREW, 1/4-20 X 1 GRD 5 HHC YEL 150	4	719564

BATTERIES – EX



BATTERIES – EX (Cont.)

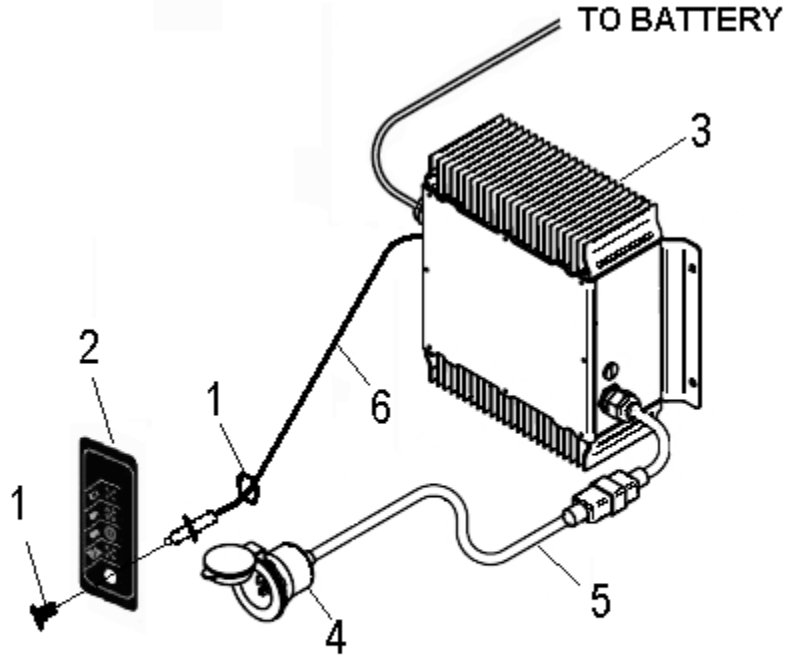
ITEM	CPC P/N	DESCRIPTION	QTY	SEATS P/N
1	67105-04	WELDMT, BTRY TRAY - 4 X 6V, EX 21	1	307500
2	6000-B	WASHER, 5/16	4	719771
3	2871-W	SCR, 5/16-18 X 1-1/4 GRD 5 HHC	4	719592
4	7739	NUT, 5/16-18 NYLOCK	4	719892
5	66014-03	BATTERY, 6V, DEEP CYCLE, (US-2000)	4	719229
5A	66005-03	BATTERY, 6V, DEEP CYCLE, (US-145)	4	719231
5B	66200-10	BATTERY, 6V, DEEP CYCLE, (AGM)	4	760586
5C	66526-10	BATTERY 12V DEEP CYCLE (AGM)	4	760581
5D	**	BATTERY, 6V, DEEP CYCLE, T605 (See Note)	4	761158
6	66561-90A	ROD, BATTERY HOLD DOWN	1	709059
7	66362-96	PLATE, BATTERY HOLD DOWN	1	513002
8	6256	WASHER FLT STAINLESS .28X1.375X.06	1	719786
9	7680	NUT 1/4-20 NE 316 STAINLESS NYLON	1	719876
10	66437-03	BRKT, CHARGER MT	1	307471
11	6703-B	WASHER FLT STL 1/4 SAE UNHARD BLK	8	719811
12	3787-B	SCREW, HEX HEAD CAP 1/4-20 X 3/4 G5	8	719636
13	7724-B	NUT 1/4-20 GR A SERRATED FLNG LOCK	8	719887
14		CHARGER (See Page 4-10)	1	
16	66034-02	PLUG, POWER INLET 120V SEALED	1	709558
17*	66493-03	CHARGER CORD, 6' (L), 14/3 WIRE (CHARGER TO VEHICLE INLET PLUG, ITEM 16)	1	719264
18*	66493-67A	EXTENSION CORD (VEHICLE TO AC POWER)	1	709890

* NOT SHOWN

** SPECIAL ORDER

NOTE: Requires 2 ea. Washers , P/N 6085. Per battery

CHARGER WITH REMOTE LED – EX21



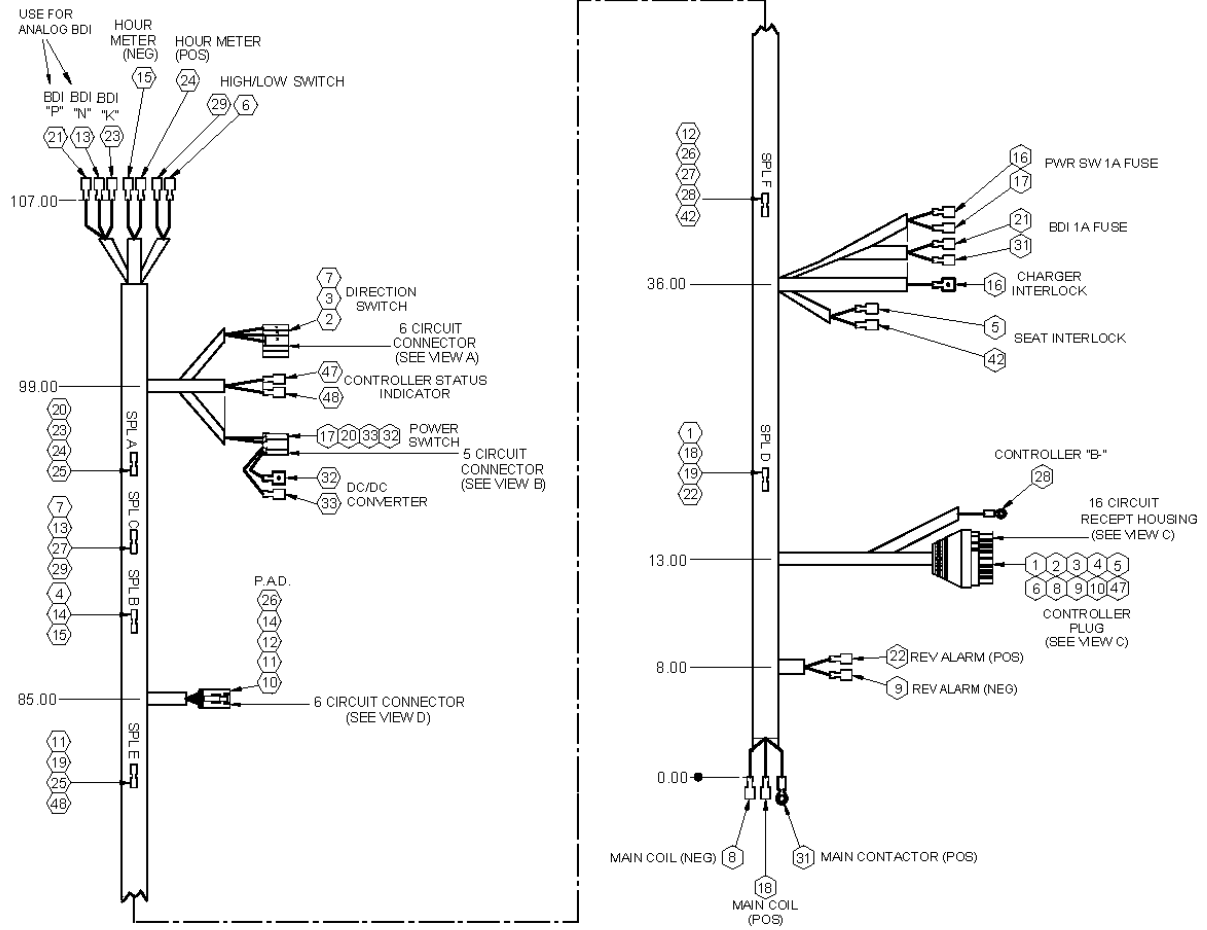
**LED & LABEL POSITION WILL BE LOCATED
ADJACENT TO THE CHARGER AC RECEPTACLE**

ITEM	CPC P/N	DESCRIPTION	QTY	SEATS P/N
1	9951	CR-174 CLIP & RING	1	781989
2	66584-12	LED FRONT LABEL	1	760754
3	43500-12	CHARGER, 24V W/LED, STANDARD	1	760744
3A	66583-12	CHARGER, 48V W/LED	1	760742
3B	66530-12	CHARGER, 24V W/LED, AGM BATT (Uses Item 3)	1	467842
3C	66582-12	CHARGER, 48V W/LED, (Uses Item 3A)	1	467839
4	66034-02	PLUG, POWER INLET 120V SEALED	1	709558
5	66493-03	CHARGER CORD 6'	1	719264
6	66029-12	LED 25' CABLE	1	760817
7*	66493-67A	EXTENSION CORD (VEHICLE TO AC POWER)	1	709890
N/A	70036-05	ASSEMBLY, CORD W/ RECEPTACLE (Includes Item 4 & 5)	1	467405

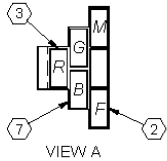
Asterisk (*) indicates a part that is not shown.

NOTE: SEE SERVICE BULLETIN SB11-004 IF REPLACING A NON-LED CHARGER.

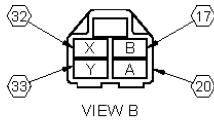
MAIN HARNESS W/FUSE BLOCK – EX



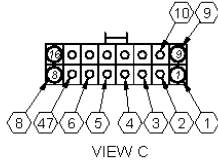
REAR VIEW OF DIRECTION SWITCH CONNECTOR



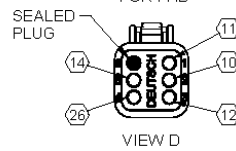
REAR VIEW OF POWER SWITCH CONNECTOR



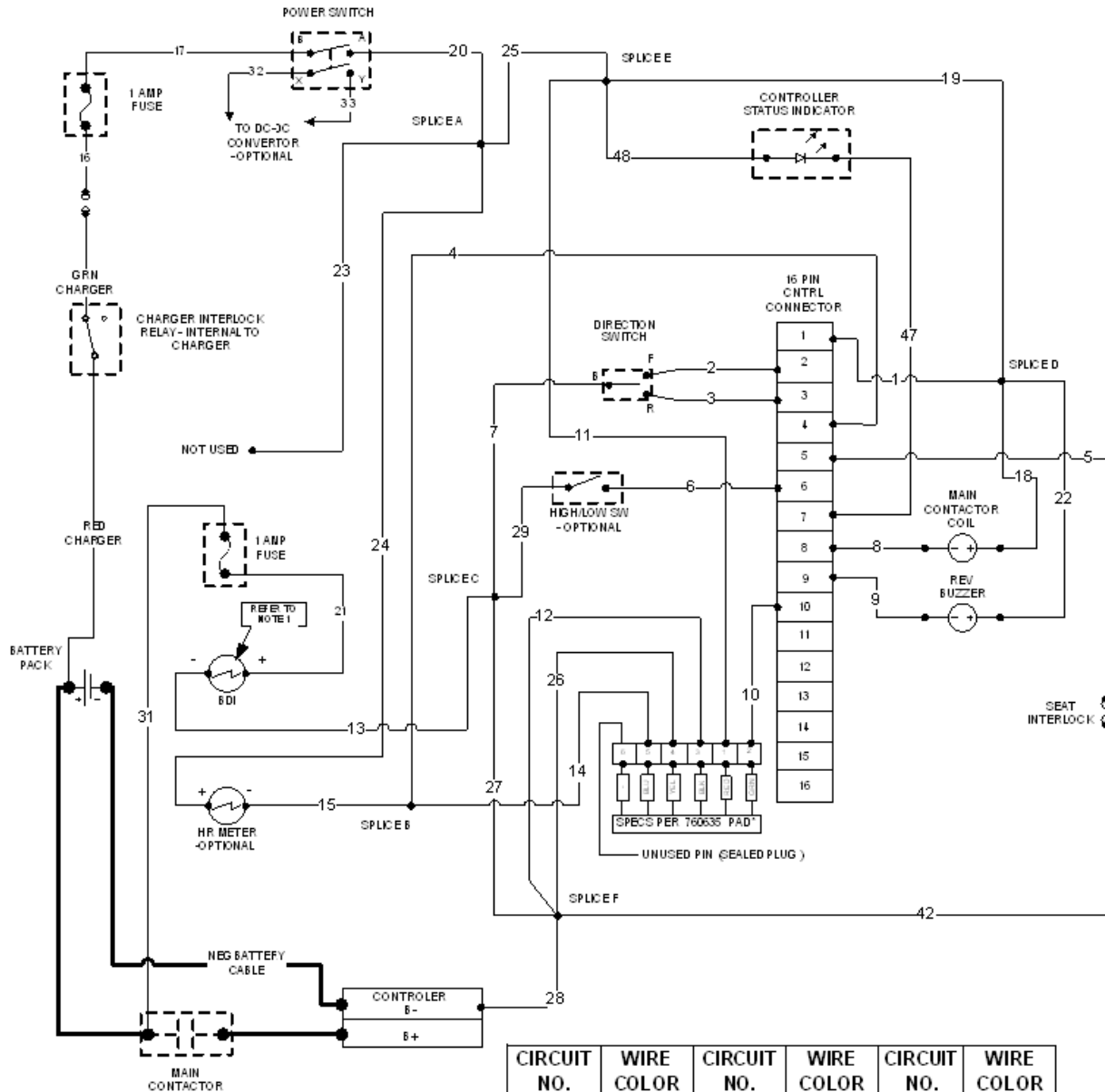
REAR VIEW OF CONTROLLER CONNECTOR W/MOLDED SEAL



REAR VIEW OF DEUTSCH DT06-6S FOR PAD



MAIN HARNESS SCHEMATIC W/FUSE BLOCK – EX (Cont.)



NOTE:

1. USES BDI:
 75061-07 BDI METER, 48V VOLTMETER
 75063-07 BDI METER, 24V VOLTMETER

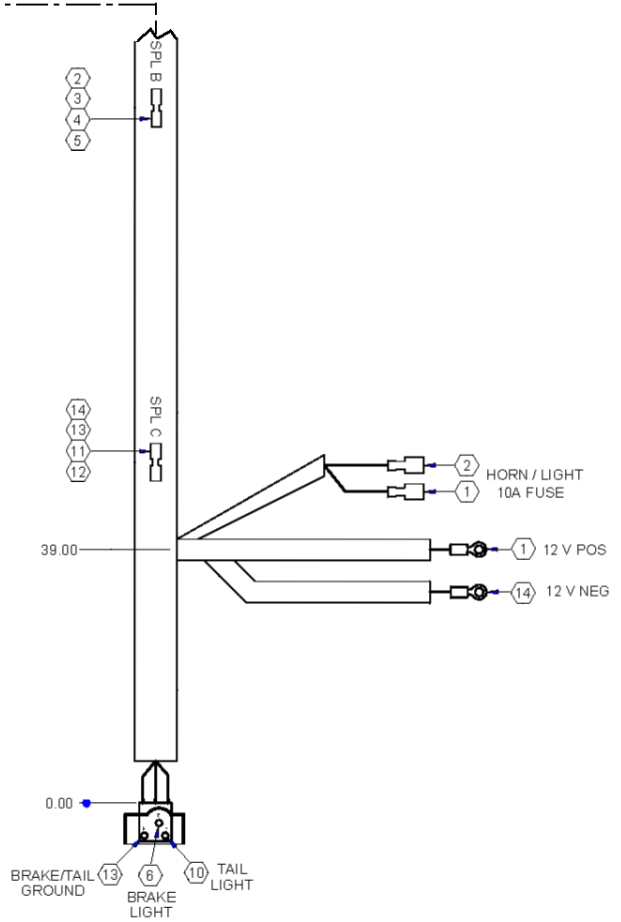
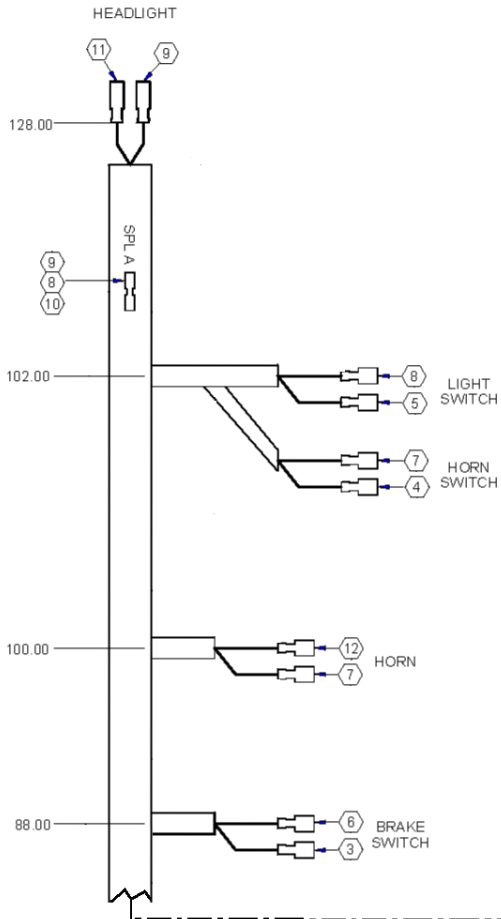
2 * PEDAL ACCELERATOR DEVICE

CIRCUIT NO.	WIRE COLOR	CIRCUIT NO.	WIRE COLOR	CIRCUIT NO.	WIRE COLOR
1	RED	13	BLK	25	WHT
2	GRN	14	BLU	26	YEL
3	GRY	15	BLK	27	BLK
4	BLK	16	RED	28	BLK
5	BLK	17	RED	29	BLK
6	BLK	18	RED	31	RED
7	BLK	19	RED	32	RED
8	BLK	20	RED	33	RED
9	BLK	21	RED	42	BLK
10	GRN	22	YEL	47	BLK
11	RED	23	WHT	48	RED
12	BLK	24	WHT		

MAIN HARNESS SCHEMATIC W/FUSE BLOCK – EX (Cont.)

ITEM	CPC P/N	DESCRIPTION	QTY	SEATS P/N
1	75063-07	BDI METER 24V	1	759873
1A	75061-07	BDI METER, 48V	1	759842
2	75033-91A	HOUR METER, 10-80 VDC	1	709452
3	72000-10	HIGH/LOW SPEED SWITCH	1	760600
4	71730-01	DIRECTION SWITCH	1	719432
5	71732-06	POWER SWITCH	1	759706
6	40610-10	PEDAL ASSY, ACCELERATOR & HARNESS	1	760635
7	51706-04	SEAT SWITCH	1	308483
8	-	CHARGER, (See Page 4-10)	1	-
9	47895-05A	CONTROLLER (Programmed 760576)	1	467696
10	75594-04	FUSE, 1 AMP ATO/ATC	2	719444
11	71408-96A	AUDIBLE ALARM, 12/48 VDC, SLOW PULSE	1	759831
12	71455-01A	CONTACTOR & MOUNTING BRACKET	1	709166
13*	70105-88	CABLE ASSY, POS/NEG 4GAX37	2	709019
14*	70351-88	CABLE, 4GAX16.75	1	709600
15*	70112-95	CABLE, 4GAX25.5	4	709732
16		MAIN HARNESS W/FUSE BLOCK	1	760839

**ACCESSORY HARNESS W/FUSE BLOCK – EX
P/N 760838**

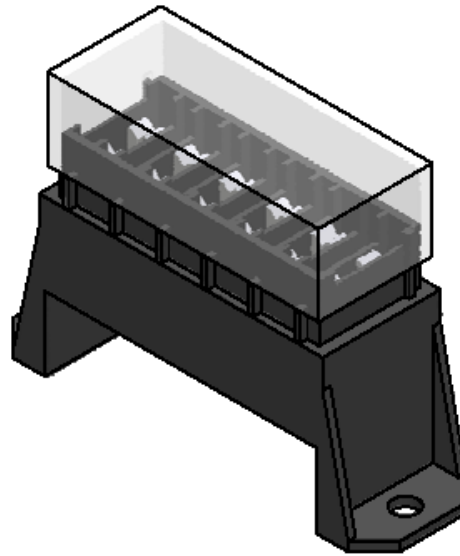


CIRCUIT NO.	WIRE COLOR	WIRE GAGE	CIRCUIT NO.	WIRE COLOR	WIRE GAGE
1	RED	16	8	BLU	16
2	RED	16	9	BLU	16
3	RED	16	10	BLU	16
4	RED	16	11	BLK	16
5	RED	16	12	BLK	16
6	GRY	16	13	BLK	16
7	WHT	16	14	BLK	16

ITEM	CPC P/N	DESCRIPTION	QTY	SEATS P/N
1	67724-91	HEADLIGHT	2	709389
2	72000-10	SWITCH, TOGGLE, ON/OFF	1	760600
3	69001-76A	HORN	1	709089
4	71807-80	HORN SWITCH	1	709385
5	68040-96	SWITCH, STOP LAMP	1	709704
6	74596-02	FUSE, 10 AMP ATO/ATC	1	709786
7	68020-92	LIGHT, 4", TAIL LAMP ASSY	1	709109
8	*	ACCESSORY WIRE HARNESS W/FUSE BLOCK, 12V	1	760838
9	68828-04	HEADLIGHT KIT	1	190473U

* SPECIAL ORDER

FUSE BLOCK – EX



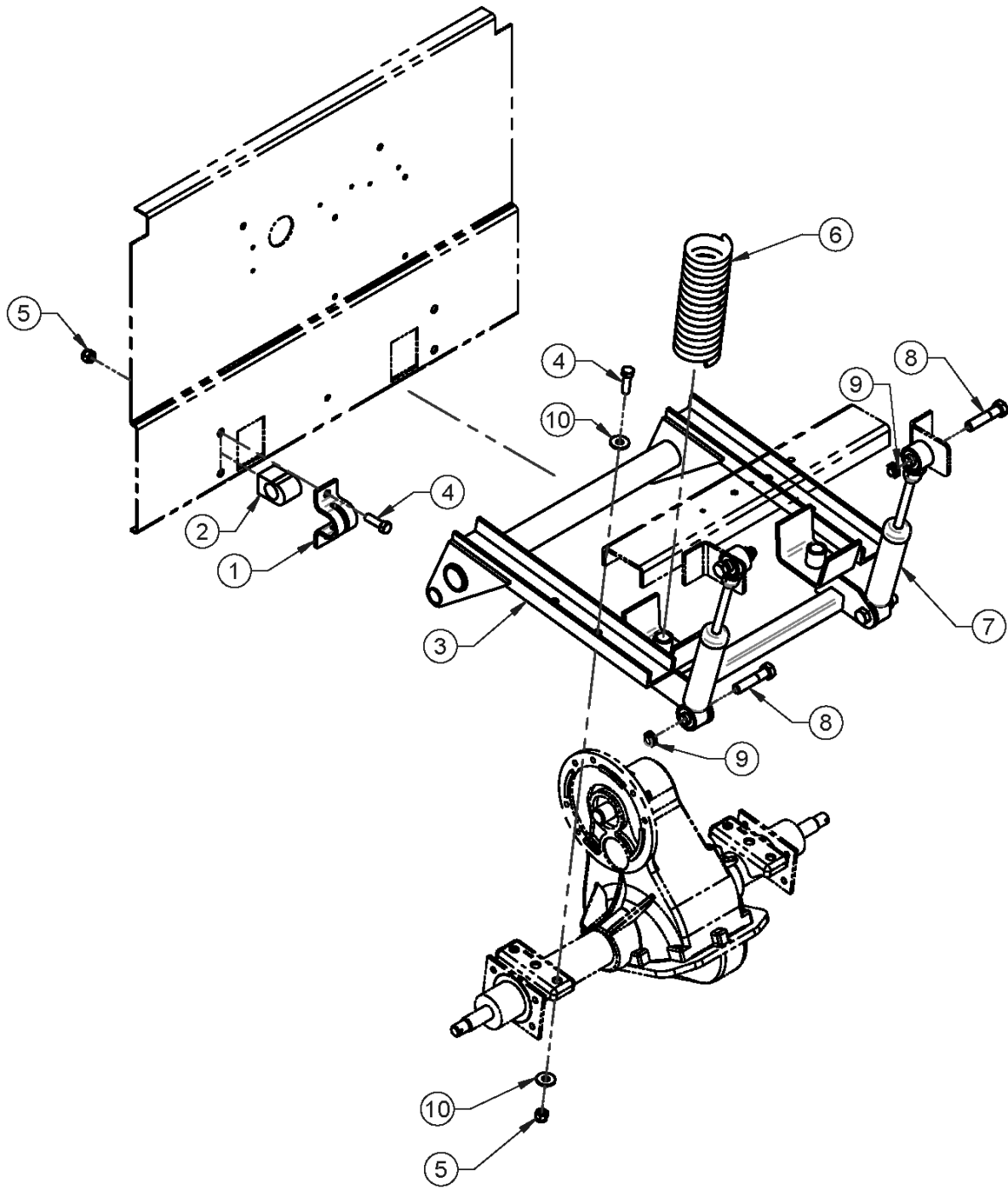
ITEM	CPC P/N	DESCRIPTION	QTY	SEATS P/N
1	53282-96	DECAL LABEL SET (See Page 3-9 for full description of this label set.)	1	709703
2	69601-12	FUSE, BLOCK 6-WAY	1	760764
3	2665	SCREW, 10-24X5/8 PPH, M/S, ZC	2	719584
4	7524	NUT, 10-24, GR A, NYLOCK	2	719870

Expediter Parts Manual

Section 5

Rear Suspension, Brakes & Axle

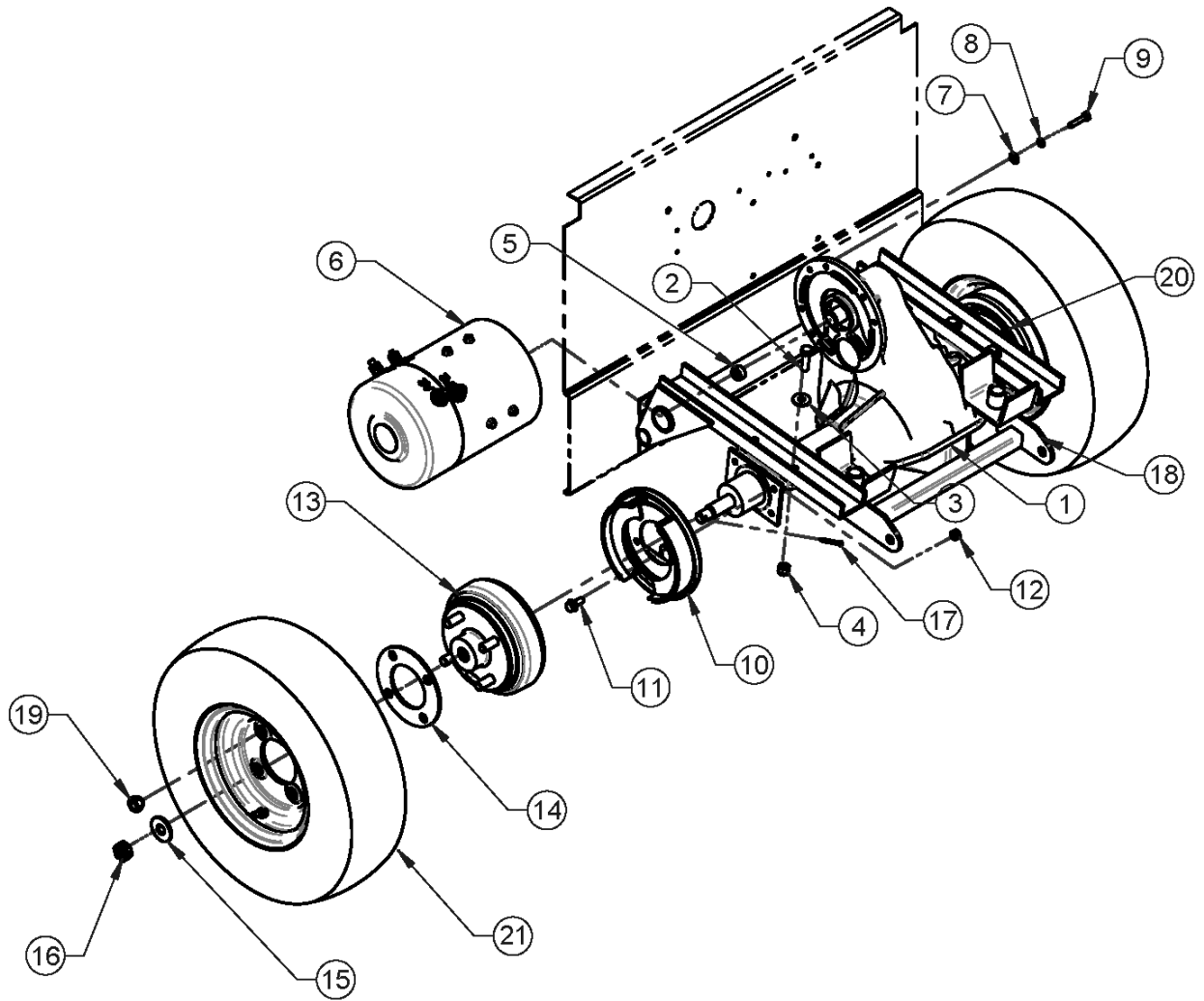
REAR SUSPENSION – EX



REAR SUSPENSION – EX (Cont.)

ITEM	CPC P/N	DESCRIPTION	QTY	SEATS P/N
1	54626-96	STABILIZER RETAINER	2	509190
2	54627-96	BLOCK, STABILIZER	2	709405
3	19401-06	REAR SUSPENSION A/ - EX 21	1	308338
4	4716-W	SCREW, HX HD CAP 3/8-16 X 1 ¼ G5	8	719694
5	7778	LOCKNUT, 3/8 -16 HEX NYLOK	8	719902
6	54567-96	SPRING, COMPRESSION	2	709403
6A	54568-04	SPRING, COMPRESSION HD	2	719167
7	54514-89	SHOCK ABSORBER	2	709006
8	3407	SCREW 1/2-13 X 2-1/4 HEX CAP	4	719611
9	7685	NUT, 1/2-13 A NTE SYLON LOCK	4	719878
10	6416	WASHER FLT STL BLK ZNC 3/8 STD	8	719796

REAR AXLE - EX

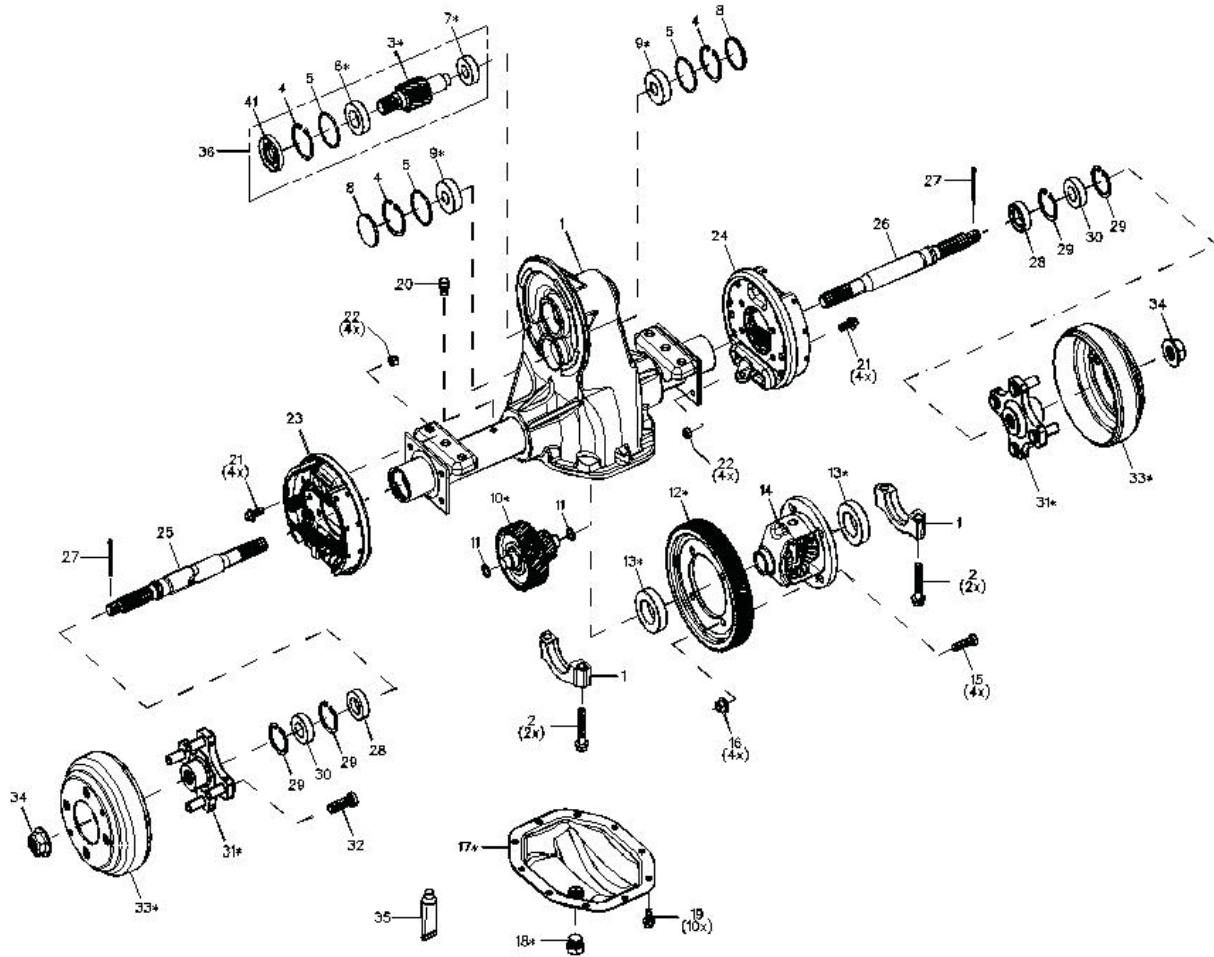


REAR AXLE – EX (Cont.)

ITEM	CPC P/N	DESCRIPTION	QTY	SEATS P/N
1	82644-05A	ASSY, AXLE, w/ BRAKES, EX-21 12.44	1	464462
1A	82647-02A	ASSY, AXLE, w/ BRAKES, EX-21 14.76 (Note: No longer available. Use Item 1B.)	1	464463
1B	82648-02A	ASSY, AXLE, w/ BRAKES EX-21 16.99	1	464464
2	4716-W	SCREW, HX HD CAP 3/8-16 X 1 ¼ G5	4	719694
3	6416	WASHER FLT STL BLK ZNC 3/8 STD	4	719796
4	7778	NUT, 3/8-16, GA, NE, NYLON INSERT, YWZC	4	719902
5	11423	RESILIENT BUMPER-ELEC MOTOR	1	709050
6	69300-03	MOTOR, ELECT., 48V, SEPARATELY EXCITED	1	719135
7	6703-B	WASHER FLT STL 1/4 SAE UNHARD BLK	3	719811
8	7036-B	WASHER LOCK 1/4 REGULAR BLK ZINC	3	719834
9	708616	SCREW, HEX HEAD CAP 1/4-20 X 1-1/4 G8	3	708616
10	41814-86B	BRAKE ASSY, RH AUTO ADJ	1	709170
*	41816-86B	SPRING PACKAGE BRAKE	1	729999
11	N/A	SCREW, 5/16-18 X .75 HEX FLG WHIZ	8	N/A
12	7810	NUT, 5/16-18 HEX HD	8	719906
13	41844-96	KIT, HUB & DRUM	2	719281
14	43740-04	SPACER WHEEL-4 HOLE	2	509958
15	6655-B	WASHER FLT STL 9/16 STD UNHARD BLK	2	719808
16	7947-B	NUT, 5/8-18 GR 2 SLOTTED HEX BLK MAX	2	719915
17	561	PIN, COTTER 1/8 X 1.50 YELLOW/ZINC	2	707841
18	19401-06	REAR SUSP A/ - EX 21	1	308338
19	43152-66	NUT, 1/2-20, TAPERED WHEEL	8	709002
20	41813-86B	BRAKE ASSY, LH AUTO ADJ	1	709171
21	40988-95	RIM & TIRE, 4.80 X 8.00 LRB	2	709107
21A	42115-04	RIM & TIRE, 4.80 X 8.00 FOAM FILLED	2	719349
21B	40995-96	RIM & TIRE, 4.80 X 8.00 SOLID NON-MARKING	2	709930
21C	40808-10	RIM & TIRE, 4.80 X 8.00 PNEUMATIC NON-MARKING	2	760323
*	41816-86B	SPRING PACKAGE BRAKE	1	729999

* NOT SHOWN

AXLE & GEAR SET – EX



COMPLETE AXLES		
GEAR RATIO	CPC P/N	SEATS P/N
12:44	82644-05A	464462
14:76	82647-02A	464463
16:99	82648-02A	464464

AXLE & GEAR SET – EX (Cont.)

ITEM	CPC P/N	DESCRIPTION	QTY	SEATS P/N
1	N/A	HOUSING, AXLE	1	N/A
2	N/A	BOLT, DIFFERENTIAL CAP (Included with Item 1)	4	N/A
3	**	SHAFT, INPUT	1	N/A
4	90006-90	RING, SNAP	3	749701
5	11118	O-RING	3	729030
6	90014-08	BEARING, BALL	1	760375
7	90004-90	BEARING, BALL	1	749699
8	N/A	PLUG, END CAP	2	N/A
9	82810-90	BEARING, BALL	2	749419
10	**	SHAFT, INTERMEDIATE GEAR	1	N/A
11	11119	O-RING	2	719132
12	**	GEAR, FINAL DRIVE	1	N/A
13	90005-90	BEARING, BALL	2	749700
14	83212-00	DIFFERENTIAL CASE ASSEMBLY	1	749575
15	N/A	SCREW, CAP	4	N/A
16	N/A	NUT, LOCK	4	N/A
17	90007-00	PLATE, COVER	1	749702
18	90008-00	PLUG, DRAIN/FILL	1	749704
19	N/A	SCREW, CAP	10	N/A
20	82701-90	VENT	1	759791
21	N/A	SCREW, FLANGE HEAD	4	N/A
22	7810	NUT, LOCK	8	719906
23	41813-86B	ASSEMBLY, BRAKE (Vehicle LH side)	1	709171
24	41814-86B	ASSEMBLY, BRAKE (Vehicle RH side)	1	709170
25	90001-95	SHAFT, AXLE, LH (Long)	1	719061
26	90002-95	SHAFT, AXLE, RH (Short)	1	719062
27	560	PIN, COTTER	2	707337
28	82704-78	SEAL, OIL	2	749367
29	82706-78	RING, RETAINING	4	749370
30	82705-78	BEARING, BALL	2	749369
31*	N/A	ASSEMBLY, HUB, WHEEL (Includes Item No. 32 & 43)	2	See Item 40
32	719463-05	BOLT, WHEEL (1.68 Long) "	8	719463
33*	N/A*	DRUM, BRAKE	2	See Item 40
34	7538	NUT, 5/8-18, HEX, FLANGE, LOCKING	2	719044
35	N/A	SEALANT, ANAEROBIC	A/R	N/A
36*	**	KIT, INPUT GEAR (Includes Items 3-7 & 41)	1	N/A
37*	**	KIT, GEAR (Includes Items 3, 10 & 12)	1	N/A
38*	N/A	KIT, BEARING (Includes Items 6, 7, 9 * 13)	1	N/A
39*	N/A	KIT, COVER PLATE (Includes Items 17 & 18)	1	N/A
40*	41844-96	KIT, HUB/DRUM (Includes Items 31 & 33)	1	719281
41	83165-08	OILSEAL – INPUT SHAFT	1	760371
42*	82779-08	KIT, INPUT BEARING * O-RING (Includes Items 4-7 & 41)	1	191697U
43*	N/A	HUB	2	See Item 40

* NOT SHOWN

** SEE GEAR SET COMPONENTS

GEAR SETS – EX

NOTE A:
CAN BE USED FOR SERVICING 2008 & EARLIER AXLES WHEN REPLACEMENT GEARS NEEDED -
ORDER NEW PINION SHAFT DESIGN COMPLETE ASM.

NOTE B:
NEW SEAL LIP PINION &
GEAR SET KIT NOW INCLUDES:
- SEALING O-RINGS
- END CAP PLUGS
- BEARINGS

SEE
NOTE A

KIT (INCLS GEARS, PINION&SEAL KIT& COMPONENT PARTS)		
CPC PN	SI PN	GEAR RATIO
82773-08	191700U	10.35:1
82774-08	191701U	12.44:1
82775-08	191702U	14.76:1
82776-08	191703U	16.99:1

NOTE C:
CAN ALSO SERVICE EARLIER AXLES

INTERMEDIATE & RING GEAR SET		INTERMEDIATE GEARS		RING GEAR	
SI PN	GEAR RATIO	NO. OF TEETH	QTY	NO. OF TEETH	QTY
760376	10.35:1	22 & 53	1	116	1
760402	12.44:1	24 & 55	1	114	1
760401	14.76:1	22 & 56	1	116	1
760400	16.99:1	22 & 58	1	116	1

NOTE D:
PINION SEAL KIT 191697U
(CPC 82779-08)
FOR USE ONLY WITH
NEW PINION SHAFT DESIGN

SEE
NOTE C

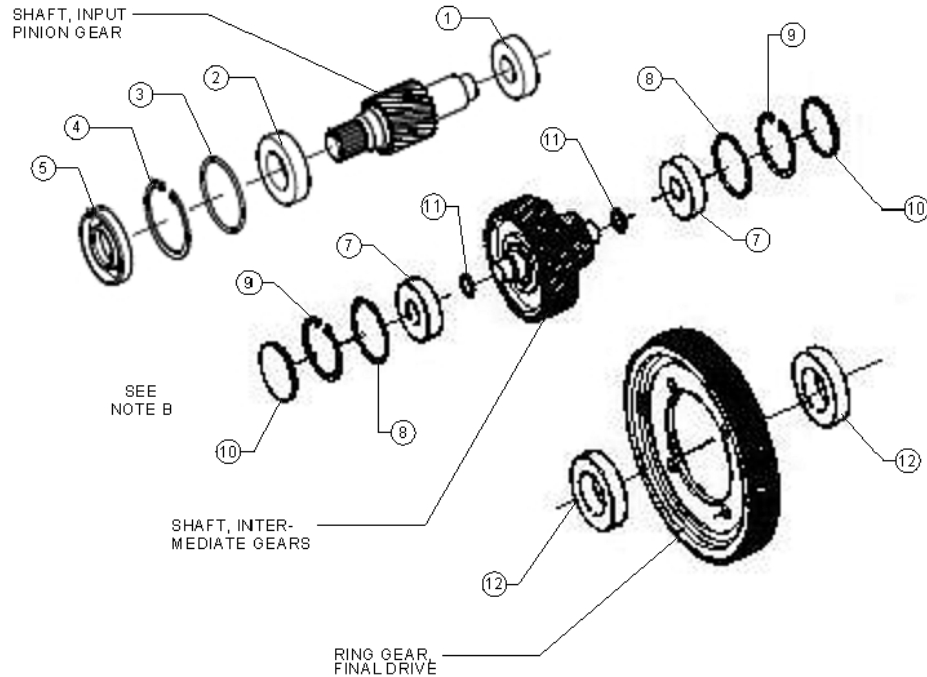
PINION & SEAL KIT (INCLUDES ITEMS IN SEAL KIT 191697U)				PINION GEAR		
CPC PN	SI PN	DESCRIPTION	QTY	GEAR RATIO	NO. OF TEETH	QTY
83218-08	760372	NEW LIP SEAL PINION KIT	1	10.35:1	27	1
83297-08	760373	NEW LIP SEAL PINION KIT	1	12.44:1	21	1
83214-08	760386	NEW LIP SEAL PINION KIT	1	14.76:1	20	1
83219-08	760374	NEW LIP SEAL PINION KIT	1	16.99:1	18	1

SEE
NOTE D

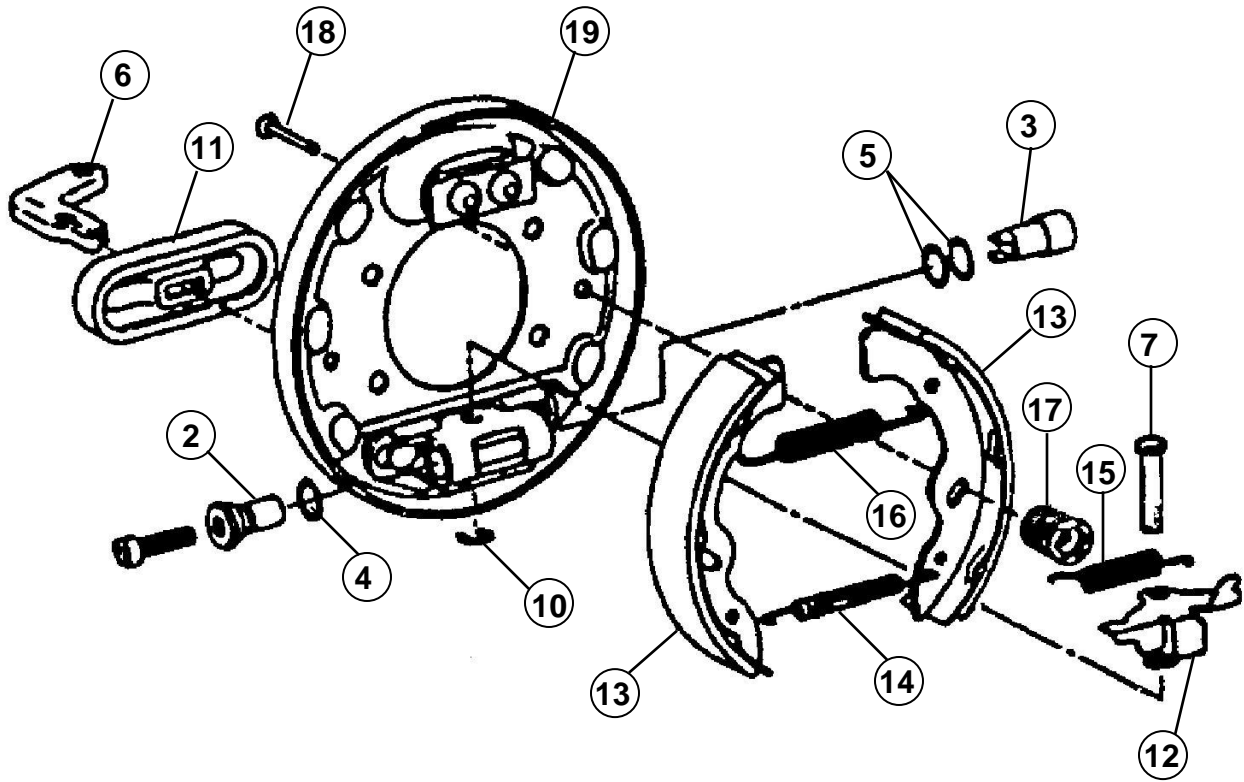
PINION SEAL KIT 191697U / (CPC # 82779-08)				
	CPC PN	SI PN	DESCRIPTION	QTY
1	90004-90	749699	BEARING BALL INNER	1
2	90014-08	760375	BEARING BALL OUTER	1
3	11118	729030	O-RING	1
4	90006-90	749701	RING SNAP	1
5	83165-08	760371	OIL SEAL - INPUT SHAFT	1
6*	N/A	N/A	INSTRUCTION SHEET	1

* ITEM NOT SHOWN

COMPONENTS FOR GEAR SET KIT (SEE KIT CHART)				
	CPC PN	SI PN	DESCRIPTION	QTY
7	82810-90	749419	BEARING BALL	2
8	11118	729030	O-RING	2
9	90006-90	749701	RING SNAP	2
10	82808-90	749418	PLUG END CAP	2
11	11119	719132	O-RING	2
12	90005-90	749700	BEARING BALL	2



MECHANICAL BRAKE ASSEMBLY – EX

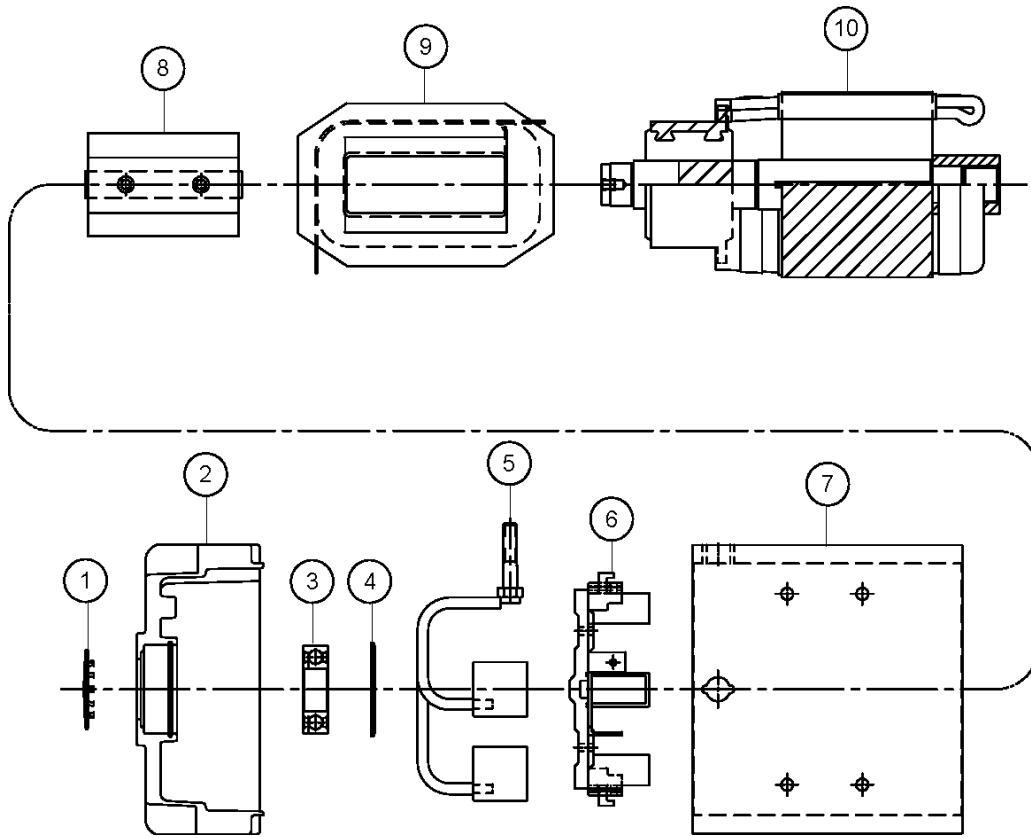


MECHANICAL BRAKE ASSEMBLY – EX(Cont.)

ITEM	CPC P/N	DESCRIPTION	QTY	SI P/N
1	41813-86B	MECH. BRAKE ASSY, LH (Includes items 2 -19)	1	709171
1A*	41814-86B	MECH. BRAKE ASSY, RH (Includes items 2 -19)	1	709170
2	N/A	ADJUSTER, LH (Only available as items 1, 1A or special order.)	1	N/A
2A*	N/A	ADJUSTER, RH (Only available as items 1, 1A or special order.)	1	N/A
3	N/A	PUSH ROD (Only available as items 1, 1A or special order.)	1	N/A
4	N/A	WASHER, FLAT (Only available as items 1, 1A or special order)	2	N/A
5	N/A	SHIM (Only available as a special order.)	A/R	N/A
6	N/A	LEVER, ACTUATOR (Only available as items 1, 1A or special order.)	1	N/A
7	N/A	PIN, PIVOT (Only available as a special order.)		N/A
8*	N/A	WASHER, WAVE, ACTUATOR PIVOT (Only available as a special order.)		N/A
9*	N/A	WASHER, FLAT, ACTUATOR PIVOT (Only available as a special order.)		N/A
10	N/A	E-CLIP (Only available as a special order.)		N/A
11	N/A	PROTECTOR BOOT (Only available as a special order.)		N/A
12	N/A	SELF ADJUSTER, LH (Only available as a special order.)		N/A
12A*	N/A	SELF ADJUSTER, RH (Only available as a special order.)		N/A
13	41819-86C	SET, SHOE & LINING ASSEMBLY (2 Shoes)	1	759746
14	N/A	SPRING, RETURN (Only available as items 1, 1A or 20.)	1	N/A
15	N/A	SPRING, SELF ADJUSTER (Only available as items 1, 1A or 20.)	1	N/A
16	N/A	SPRING, SHOE RETAINING (Only available as items 1, 1A or 20.)	1	N/A
17	N/A	SPRING CLIP, SHOE RETAINER (Only available as items 1, 1A or 20.)	2	N/A
18	N/A	PIN, SHOE RETAINING (Only available as items 1, 1A or 20.)	2	N/A
19	N/A	SHIELD, DUST (See Note 1)	1	N/A
20*	41816-86B	KIT, SPRING (Includes Items 14-19)	1	729999

* NOT SHOWN

MOTOR, SEP EX – EX21



ITEM	CPC P/N	DESCRIPTION	QTY	SEATS P/N
1	*	HOLE PLUG		N/A
2	*	COMMUTATOR END HEAD (Includes Fasteners)	1	N/A
3	83310-07	BEARING	1	759896
4	*	RETAINING RING	1	N/A
5	30402-06	BRUSH ASSY. (Includes Fasteners)	2	759780
6	30403-06	BRUSH BOX ASSY. (Includes Fasteners)	1	759781
7	*	MOTOR FRAME	1	N/A
8	*	POLE SHOE ASSY. (Includes Fasteners)	4	N/A
9	*	SHUNT COIL ASSY. (Includes Fasteners)	1	N/A
10	*	ARMATURE ASSY.	1	N/A
N/A	69300-03	MOTOR, COMPLETE (INCLUDES ITEMS 1-10)	1	719135

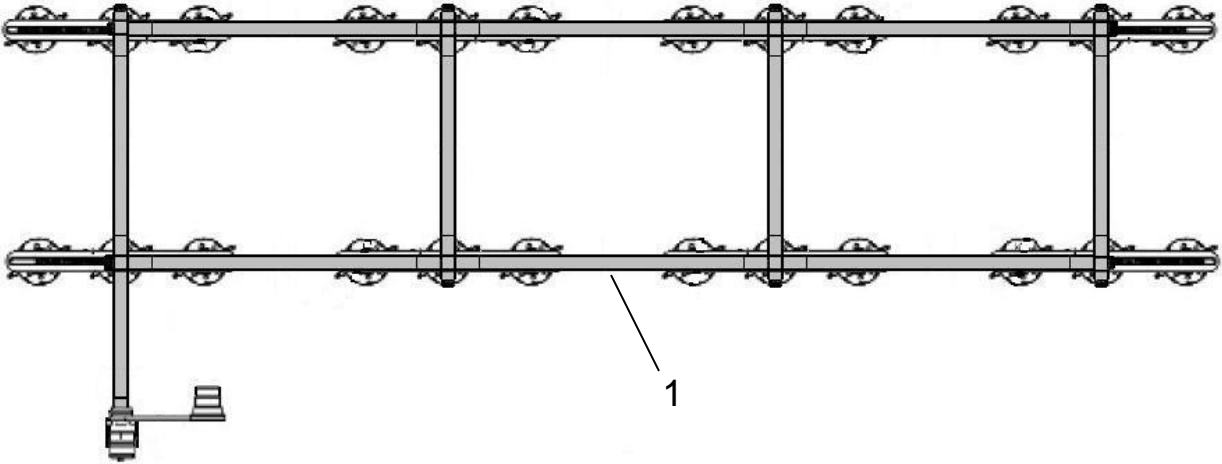
* SPECIAL ORDER

Expediter Parts Manual

Section 6

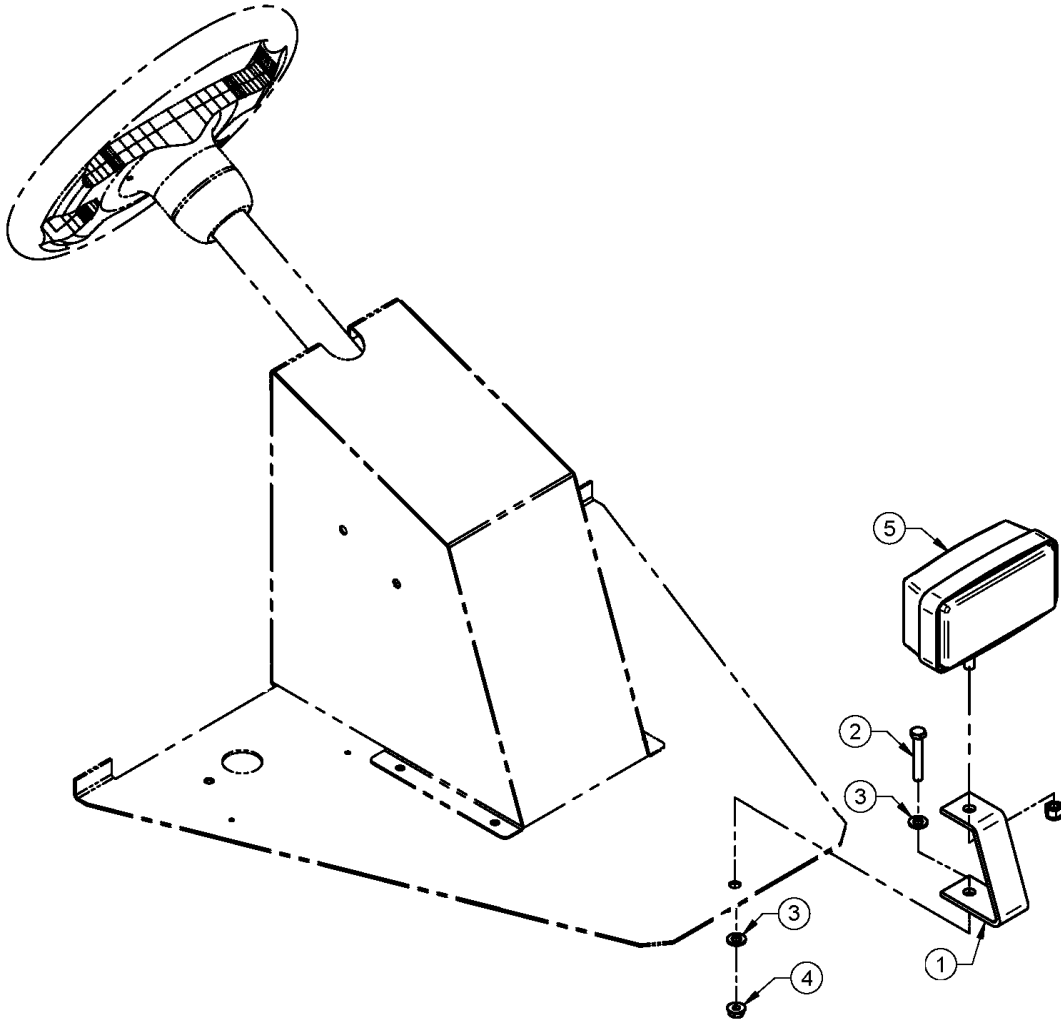
Options

BATTERY WATERING SYSTEM – EX



ITEM	CPC P/N	DESCRIPTION	QTY	SEATS P/N
1	66210-07	WATERING ASSEMBLY	1	759857
2	66211-07	PUMP	1	759858

HEADLIGHT – EX

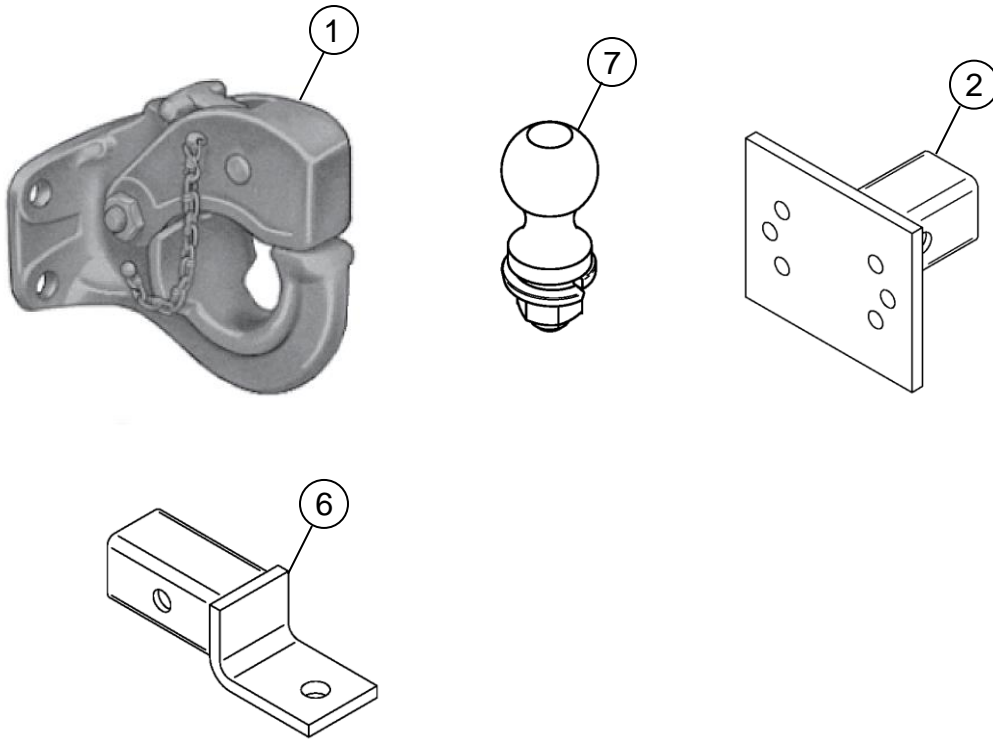


ITEM	CPC P/N	DESCRIPTION	QTY	SEATS P/N
1	68841-00	LIGHT MOUNTING. BRACKET.	1	509203
2	2667	SCREW, 5/16-18 X 2 GRD 5 HHC YEL 150	1	719585
3	6702-B	WASHER FLT STL 5/16 BLK MAXCOAT	2	719810
4	7739	NUT, 5/16-18 NYLOCK	1	719892
5	67724-91	HEADLIGHT	1	709389
6**	10008	CABLE TIE 5 3/4"	2	719501
7**	10020	CABLE TIE MOUNTING BRACKET	2	719503
8**	72000-10	TOGGLE SWITCH	1	760600
6*	68828-04	KIT, HEADLIGHT ACE+ (Includes Items 1-8)	1	190473U

* IF NOT EQUIPPED WILL REQUIRE AN ACCESSORY HARNESS (P/N 78871-03)

** NOT SHOWN

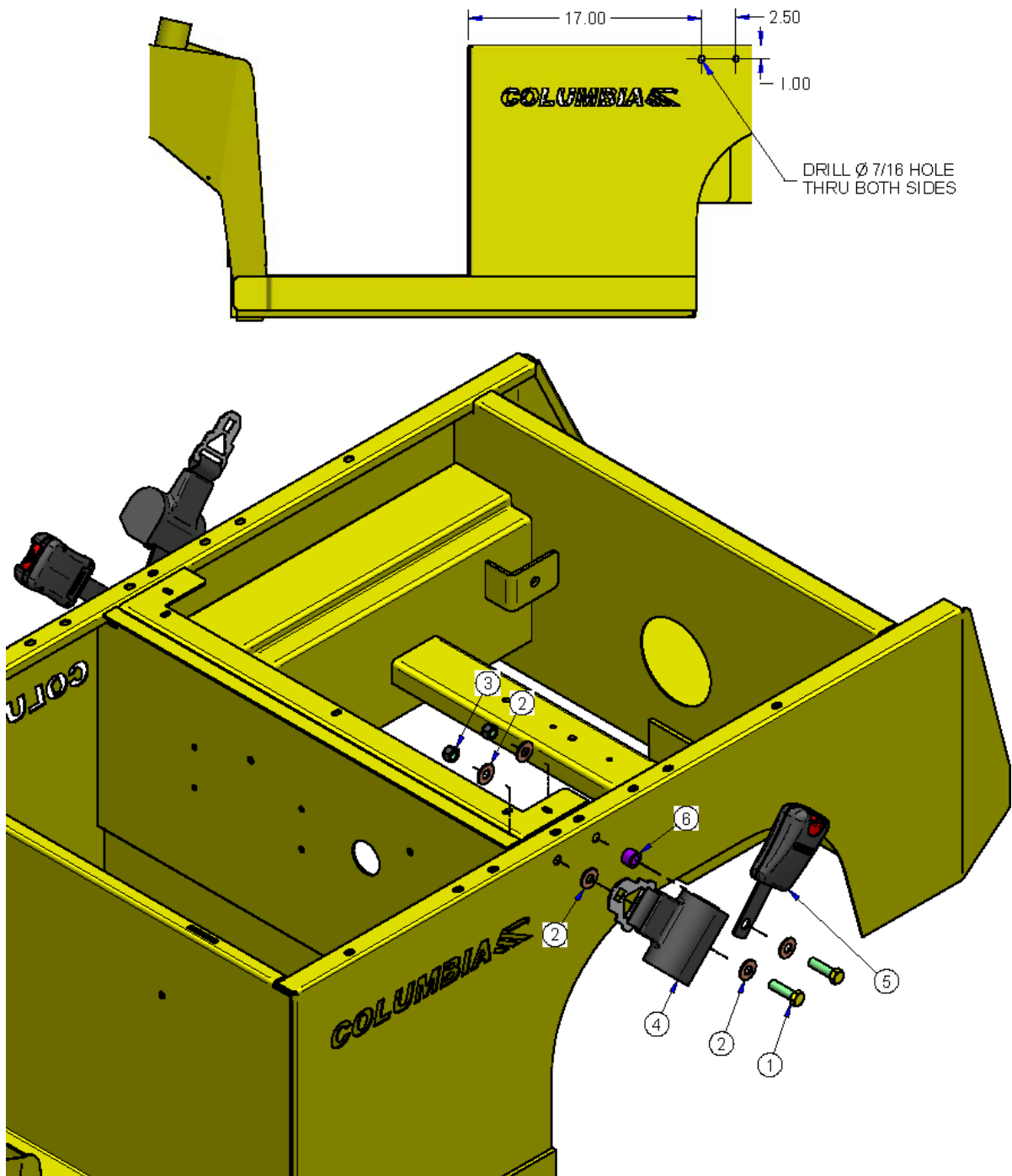
HITCHES – EX21



ITEM	CPC P/N	DESCRIPTION	QTY	SEATS P/N
1	57315-96	PINDLE HOOK HITCH	1	709833
2	82071-05	HITCH PLATE	1	307716
3	82062-02	HITCH PIN 5/8 OD (used with Items 2 & 6)	1	719210
4*	7812-W	NUT, 1/2-20 NYLOK GR A (Used with Item 1)	4	719907
5*	4010	SCREW, 1/2-20x1.5 HHCS G5 (Used with Item 1)	4	729809
6	82072-05	BALL MOUNT RECEIVER	1	306922
7	82065-98	TRAILER HITCH BALL, CHROME 1 7/8"	1	719008
7A	82064-02	HITCH BALL, 2"	1	719207

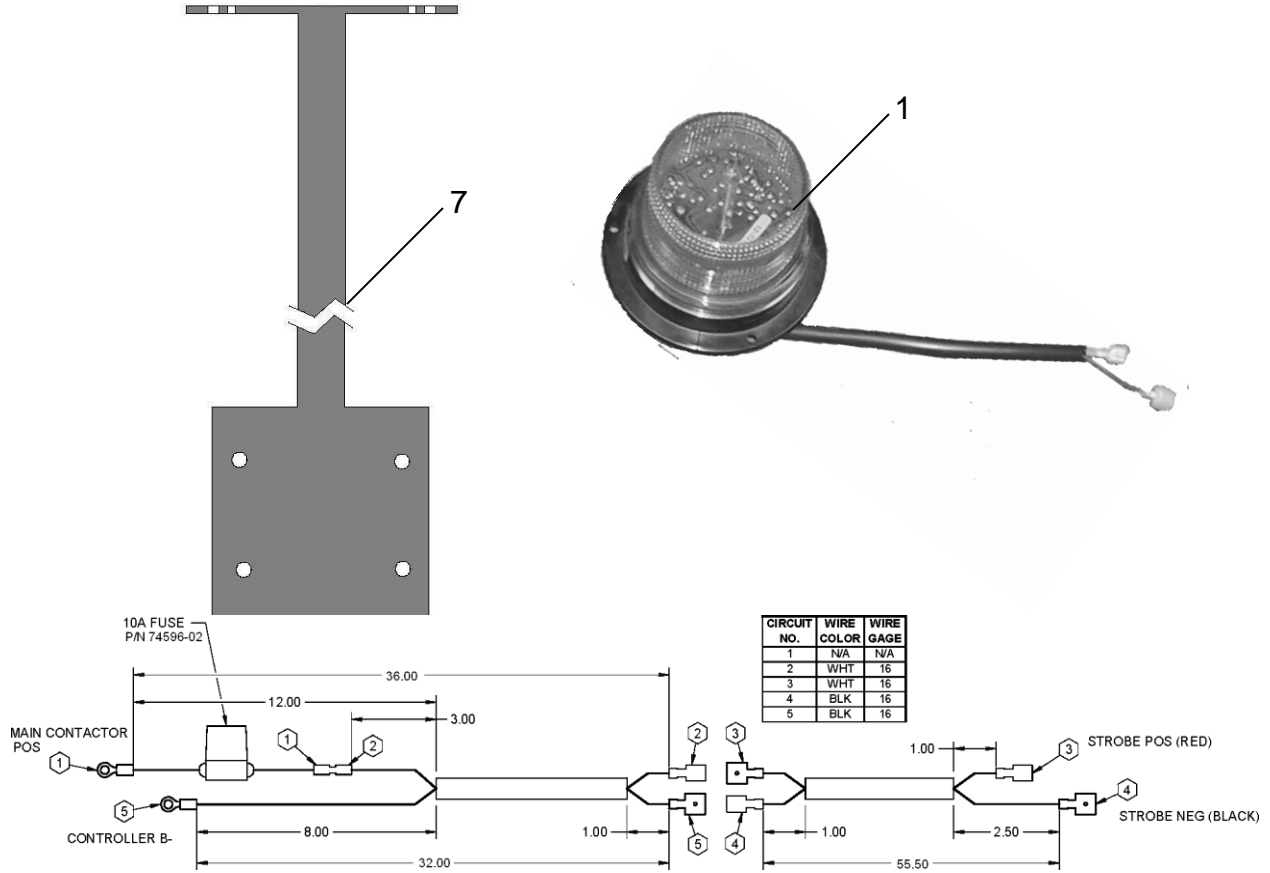
* NOT SHOWN

SEAT BELTS - EX



ITEM	CPC P/N	DESCRIPTION	QTY	SEATS P/N
1	4256	SCREW, 7/16-20X1.5 HHC	4	719665
2	6416	WASHER. 3/8 FLT	10	719796
3	7825	NUT, 7/16-20 NYLOCK	4	719908
4	75504-09	SEAT BELT 48"	2	741359
5	75502-09	SEAT BELT ATS BUCKLE	2	741361
6	47980-10	SPACER, .75 OD X .50 ID X.50 LG	2	760671

STROBE LIGHT – EX21

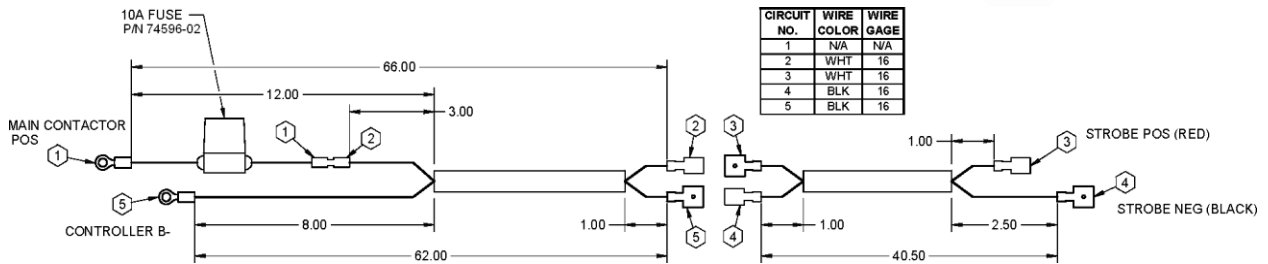
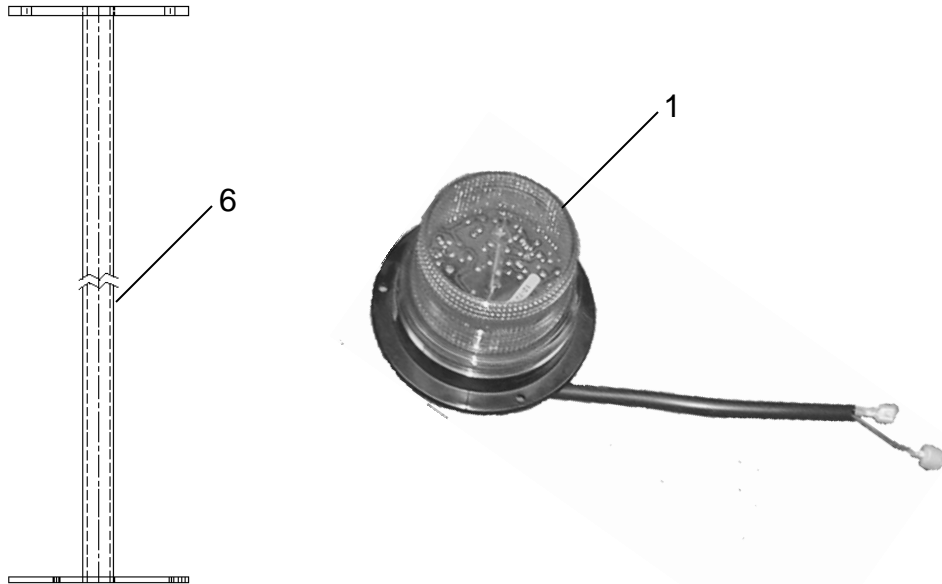


ITEM	CPC P/N	DESCRIPTION	QTY	SEATS P/N
1	68029-06	STROBE LIGHT ASSY	1	467408
2	10043	CABLE TIE	2	719504
3*	10008	CABLE TIE 5 3/4"	3	719501
4*	10020	CABLE TIE MOUNTING BRACKET	3	719503
5*	11416	GROMMET 3/8X7/8	1	719522
6*	2339	SCREW, #10-24X3/4, HH	3	719551
7	68504-02	LIGHT MAST(Mounts to body with Items 9 – 11)	1	306164
8	**	HARNESS, LIGHT MAST	1	467442
9*	3787-B	SCREW 1/4-20X3/4 HHC	4	719636
10*	6703-B	WASHER 1/4	4	719811
11*	7624	NUT, 1/4-20 NYLOCK	3	719870
12*	7724-B	NUT, 1/4-20 SERR FLANGE	4	719887
13*	68827-96A	KIT, STROBE LIGHT W/MAST	1	191467U

* NOT SHOWN

** SPECIAL ORDER

STROBE LIGHT – TOOL EXPRESS



ITEM	CPC P/N	DESCRIPTION	QTY	SEATS P/N
1	68029-06	STROBE LIGHT ASSY	1	467408
2	10043	CABLE TIE	2	719504
3*	10008	CABLE TIE 5 3/4"	4	719501
4*	10020	CABLE TIE MOUNTING BRACKET	3	719503
5*	2339	SCREW, #10-24X3/4, HH	3	719551
6	**	LIGHT POLE	1	304767
7	**	HARNESS, LIGHT MAST TE31	1	467443
8*	3454-BS	SCREW 1/4-20X1 3/4 HHC	4	719623
9*	6703-B	WASHER 1/4	8	719811
10*	7624	NUT, 1/4-20 NYLOCK	3	719870
11*	7686	NUT, 1/4-20 NYLOCK	3	719879
12*	68821-05	KIT, TE31, POLE STROBE LIGHT	1	190476U

* NOT SHOWN

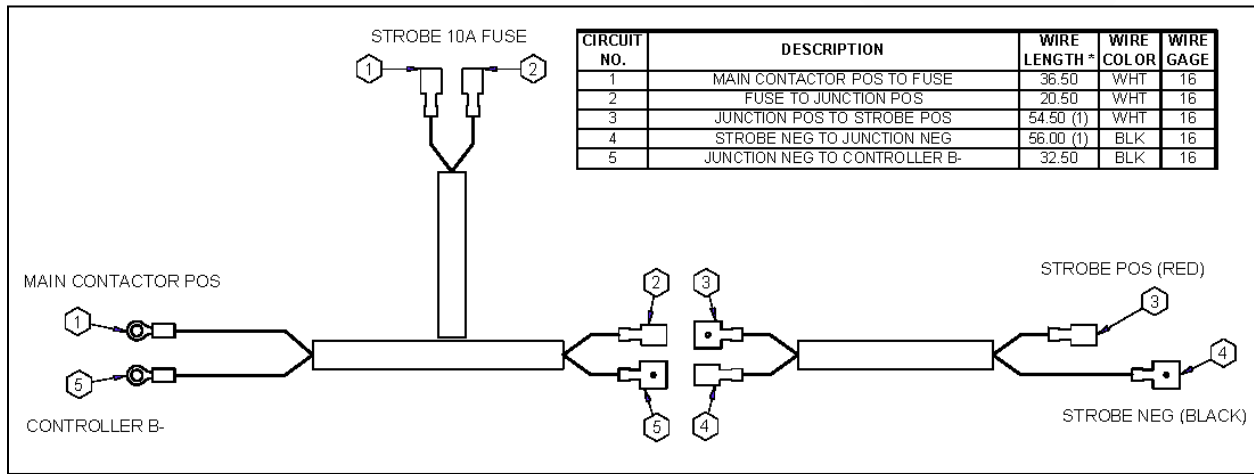
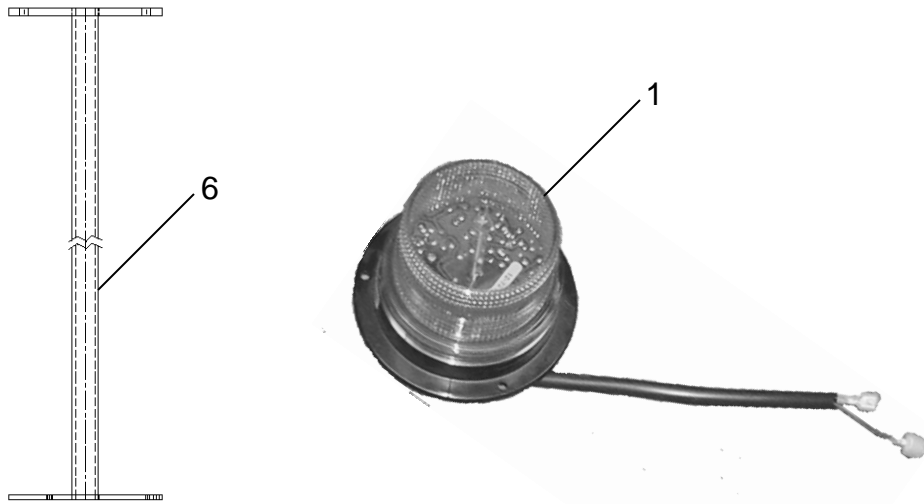
** SPECIAL ORDER

WHEELS – EX

ITEM	CPC P/N	DESCRIPTION	QTY	SEATS P/N
1	40988-95	TIRE/WHEEL ASSY, 4.8X8 LRC	3/4	709107
2	42115-04	TIRE/WHEEL ASSY, 4.8X8 FOAM FILLED	3/4	719349
3	40995-96	TIRE/WHEEL ASSY, 4.0X8 SLD NONMARKING	3/4	709930
4	40808-10	TIRE/WHEEL ASSY, 4-H, 4.8X8 NM, LRC	3/4	760323
5*	43152-66	NUT, 1/2-20, TAPERED WHEEL	A/R	709002

* NOT SHOWN

STROBE LIGHT – EX21 (fuse block vehicles)



ITEM	CPC P/N	DESCRIPTION	QTY	SEATS P/N
1	68029-06	STROBE LIGHT ASSY	1	467408
2*	10043	CABLE TIE	2	719504
3*	10020	CABLE TIE MOUNTING BRACKET	3	719503
4*	11416	GROMMET 3/8X7/8	1	719522
5*	2339	SCREW, #10-24X3/4, HH	3	719551
6	68504-02	LIGHT MAST(Mounts to body with Items 9 – 11)	1	306164
7	**	HARNESS, STROBE	1	467408
9*	3787-B	SCREW 1/4-20X3/4 HHC	4	719636
10*	6703-B	WASHER 1/4	4	719811
11*	7624	NUT, 1/4-20 NYLOCK	3	719870
12*	7692	NUT, 1/4-20 NYLOCK	4	719882
13*	68827-13	KIT, STROBE AMBER POLE (Includes above Items)	1	192600U

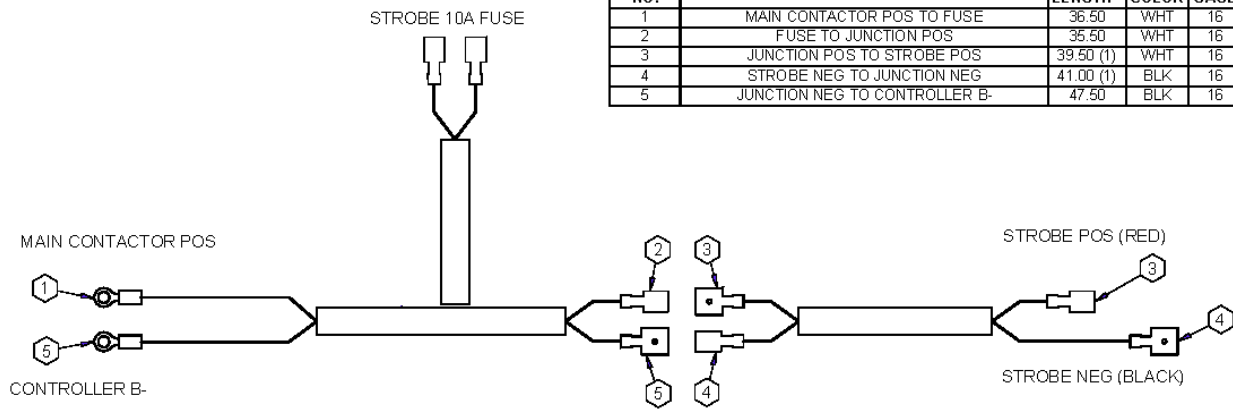
* NOT SHOWN

** SPECIAL ORDER

STROBE LIGHT – TOOL EXPRESS (fuse block vehicles)



CIRCUIT NO.	DESCRIPTION	WIRE LENGTH *	WIRE COLOR	WIRE GAGE
1	MAIN CONTACTOR POS TO FUSE	36.50	WHT	16
2	FUSE TO JUNCTION POS	35.50	WHT	16
3	JUNCTION POS TO STROBE POS	39.50 (1)	WHT	16
4	STROBE NEG TO JUNCTION NEG	41.00 (1)	BLK	16
5	JUNCTION NEG TO CONTROLLER B-	47.50	BLK	16



ITEM	CPC P/N	DESCRIPTION	QTY	SEATS P/N
1	68029-06	STROBE LIGHT ASSY	1	467408
2*	10043	CABLE TIE	4	719504
3*	10020	CABLE TIE MOUNTING BRACKET	3	719503
4*	2339	SCREW, #10-24X3/4, HH	3	719551
5	**	LIGHT POLE	1	304767
6	**	HARNESS, LIGHT MAST TE31	1	467957
7*	3454-BS	SCREW 1/4-20X1 3/4 HHC	4	719623
8*	6703-B	WASHER 1/4	8	719811
9*	7624	NUT, 1/4-20 NYLOCK	3	719870
10*	7686	NUT, 1/4-20 NYLOCK	4	719879

* NOT SHOWN

** SPECIAL ORDER